



日本モルック協会
Japan Molkky Association

Molkky World Championship 2024 in HAKODATE



Ver.1

スポーツクリ



私たちはスポーツ振興くじ助成を受けています。

I .Overview	p.2
II .Check-in process for players	p.3
III .Team ID,Group List	p.6
IV .Rules	p.28
V .Schedule	p.31
VI.Preliminary Round	p.35
VII.Finals Tournament	p.40
VIII.TAIYO GROUP presents Friendly Tournament	p.46
IX.Match Table	p.51
X .Venue	p.90
XI.Notice	p.94
XII.Others	p.102

■Schedule

23 August 2024 (Friday) ~ 25 August 2024 (Sunday)

■Venue

Showa Park

20 Showacho, Hakodate, Hokkaido 041-0823

<https://maps.app.goo.gl/5hyqL5ikmXBkPQVx6>



National Institute of Technology, Hakodate College (NITHC)

14-1 Tokuracho, Hakodate, Hokkaido 042-0953

<https://maps.app.goo.gl/7i9Hzfnxv7UQHCCs6>



II. Check-in process for players



To all participants of the 2024 Molkky World Championship in Hakodate, here are the details regarding the Tournament Check-in.

Early Check-in:

All teams can check in during the Early Check-in period.

On-the-Day Check-in:

Check-in times vary depending on your team's Preliminary Round Block. Please confirm your "Preliminary Round Block" and "Team ID" from the provided information and check the applicable check-in times.

*One representative from each team must complete the Tournament Check-in by the designated time.

*Please provide your team's "Team ID (6-digit number)" at check-in.

Note that this time we will not use the QR code issued by LivePocket, as in previous domestic tournaments.

II. Check-in process for players



***Please ensure you complete the tournament check-in at one of the following slots
(each team is required to register only once).**

Early Check-in (any team)

22 August (Thu): 12:00 PM – 6:00 PM at N.I.T Hakodate College

23 August (Fri): 11:00 AM – 5:00 PM at Showa Park

6:00 PM – 9:00 PM at the Eve Event Venue (Hakodate Beer)

Note: Check-in at the Eve Event venue from 6:00 PM to 9:00 PM on 23 August
is available also to participants not attending the Eve Event.

On-the-Day Check-in for Preliminary Round Block A and C:

24 August (Sat): 7:00 AM – 8:00 AM at Showa Park and N.I.T Hakodate College

On-the-Day Check-in for Preliminary Round Block B and D:

24 August (Sat): 10:00 AM – 1:00 PM at Showa Park and N.I.T Hakodate College

II. Check-in process for players



One representative from each team must check in within the designated period and collect the participation awards and silicon bands for all team members.

All participating players must wear the silicon band throughout the tournament.

Teams that complete Early Check-in on 22 or 23 August do not need to check in on the day of the tournament.

They should wear their silicon bands and gather directly at their designated courts well before the start of their matches.

Note: Only authorised personnel are allowed inside the court area.

All participants must wear their silicon bands throughout the tournament.

If anyone without a silicon band is found inside the court area, tournament staff may ask them to leave.

Your understanding is appreciated.

III. Team ID Numbers, A, B



Please note that your team's **Team ID** will be used during on-site check-in, so make sure to record it. The six-digit Team Number is structured as follows:
Group number (2 digits) + Number within the group (2 digits) + Court number for the first match (2 digits)

Team ID	Team Name	Nation	City
310409	2kai-z	Japan	Hyogo
420220	35PT-C	Japan	Tokyo
530409	3KY molkkyers	Japan	Hokkaido
960426	5Turn Spiders	Japan	Kanagawa
240702	A-tie	Japan	Tokyo
290307	aamokk	Japan	Aichi
280606	abagakari	Japan	Hokkaido
950325	ADPANDARS	Japan	Aichi
750305	aile	Japan	Hokkaido
860516	Akashi Molkky Club	Japan	Hyogo
630519	Ankka Mixture	Japan	Kyoto
360314	Ankka_aigamo	Japan	Kyoto
620418	Ankka_Terastal	Japan	Kyoto
410319	Aomori Joyful Molkky PaB	Japan	Aomori
700226	Arabiki Nuts	Japan	Osaka
630219	arcana	Japan	Hokkaido
880318	Arse Hikage	Japan	Chiba
610417	ASAI Germanium	Japan	Hokkaido
320410	AshiMol	Japan	Kanagawa
390217	Asia University Staff Molkky Club	Japan	Tokyo
290207	Aurora	Japan	Saitama
450501	AZUMI GATTARO	Japan	Nagano

Team ID	Team Name	Nation	City
720602	Bacchus	Japan	Tokyo
680724	Back Exstation 45	Japan	Miyagi
180418	BAIKA Classic	Japan	Osaka
260204	Bar_PIGEON	Japan	Chiba
900420	Basilisk	Japan	Tokyo
920522	Bee-Mo	Japan	Tokyo
520108	BEER POWERS	Japan	Niigata
660222	Bernese Mountain Molkky	Japan	Chiba
590215	BIWAKO Doughnuts Hole	Japan	Tokyo
090509	BLACK ALIENS	Japan	Oita
270705	Black Panthers	Japan	Osaka
490505	blue note	Japan	Mie
210221	BOBO lu	Japan	Nagasaki
230601	bone heas	Japan	Hokkaido
070407	BOYCOTT MONDAYS	Japan	Tokyo
900520	BUNMOL	Japan	Tokyo

III. Team ID C,D,E



Please note that your team's **Team ID** will be used during on-site check-in, so make sure to record it.
 The six-digit Team Number is structured as follows:
Group number (2 digits) + Number within the group (2 digits) + Court number for the first match (2 digits)

Team ID	Team Name	Nation	City
690625	C2 Quartet	Japan	Chiba
610117	CABUCHANS	Japan	Hokkaido
730703	CCNG	Japan	Kanagawa
700126	Central Japan	Japan	Aichi
200220	chee	Japan	Tokyo
760306	Chiba Seminar	Japan	Kanagawa
400418	Chii Mol	Japan	Akita
200320	Chita molkky club	Japan	Aichi
460102	Cinderella express	Japan	Kochi
760206	CLIFF CLUB	Japan	Tokyo
580414	Co duck	Japan	Tokyo
200520	co3co SP	Japan	Osaka
610317	CoARK	Japan	Kanagawa
160116	coco-hari molkky club	Japan	Nagano
330611	coelacanth	Japan	Osaka
860616	cogoce ace	Japan	Osaka
450301	cogoce Bee	Japan	Osaka
170217	cokes	Japan	Yamaguchi
920122	comodo	Japan	Osaka
640520	Consadole Supporter Molkky CLUB	Japan	Hokkaido
320310	CONSASAPO KURI	Japan	Hokkaido
690125	Country Stand	Japan	Tokyo
080108	Crazy Turtles	Japan	Hokkaido
800710	Creepy Acorns	Japan	Tokyo
870217	CTS	Japan	Hokkaido
850115	Czech Happiness	Czech Republic	—

Team ID	Team Name	Nation	City
630319	DABISUKE ZOO YAMATO	Japan	Hokkaido
390517	Daimonkanpaidoumei	Japan	Hokkaido
670423	DAISANDAI JAWS	Japan	Kyoto
360614	DARWINIANSEA	Japan	Osaka
860216	Date torippis	Japan	Hokkaido
080408	Defence Back Ohtaki	Japan	Hokkaido
280306	DeMB	Japan	Kanagawa
650321	DMC	Japan	Saitama
110311	Docon	Japan	Hokkaido
800410	DOIRYO STARS	Japan	Hokkaido
400518	DOIRYOU ver.World	Japan	Hokkaido
890219	Dokkyo PerDöMö	Japan	Saitama
370315	DUNMOK	Japan	Aichi
260104	Dwunastka MM	Poland	—
680624	DYUbee	Japan	Chiba
790509	EAST THUNDER	Japan	Tokyo
530609	Easy peasy Japanesy	Japan	Hokkaido
110111	Ebetsu Molkky	Japan	Hokkaido
290407	Eight days off a week	Japan	Osaka
300408	EMUCHIRU	Japan	Saitama
870517	Enimwamorukkunokai	Japan	Hokkaido
660722	ERDINGER's	Japan	Saitama
570213	ETUDERS	Japan	Shiga

III. Team ID F,G,H



Please note that your team's **Team ID** will be used during on-site check-in, so make sure to record it.
 The six-digit Team Number is structured as follows:
Group number (2 digits) + Number within the group (2 digits) + Court number for the first match (2 digits)

Team ID	Team Name	Nation	City
780708	F.UEDA	Japan	Shiga
090609	fanfare	Japan	Hokkaido
780508	fernando.B	Japan	Hokkaido
600416	FERNANDO.K	Japan	Hokkaido
790709	Field Trip	Japan	Tokyo
170317	FINDING FUNDS	Japan	Kyoto
300108	Finskaroo's Gold	Australia	—
400118	Finskaroo's Green	Australia	—
800110	Flugschneisenwerfer	Switzerland	—
110411	FMIRUKA MOLKKY CLUB	Japan	Hokkaido
120612	fomitetsu	Japan	Saitama
500706	Fuchu-mol 38	Japan	Tokyo
580614	Fudooka Molky	Japan	Saitama
820412	Fuji Oilers	Japan	Hyogo
310209	Fujita Geshuku OG	Japan	Iwate
870417	Fukagawa WH_hips young stars	Japan	Hokkaido
730403	Fukushima Molky Club	Japan	Fukushima
160716	Fukutsu MC	Japan	Fukuoka
380616	FUN sports club	Japan	Tokyo
340612	FURU	Japan	Saitama
300708	FUURINKAZAN	Japan	Aichi
480604	GAMAGOORI MOLKKERS	Japan	Aichi
510107	gambrers1	Japan	Tokyo
840114	Game of Throws	India	—
070507	GenerationMix	Japan	Chiba
260304	gojomol	Japan	Hokkaido
090709	GOOD FRIENDS	Japan	Hokkaido
040204	Good Molcking Guys	Japan	Saitama
810711	Goofy fox	Japan	Hokkaido
200420	Gosaloo Boys	Japan	Hokkaido
010501	GURUMAN	Japan	Hokkaido

Team ID	Team Name	Nation	City
720502	hadashikoza	Japan	Kanagawa
120412	HAGAKURE	Japan	Chiba
670323	Hakodate goryokaku hospital B	Japan	Hokkaido
590115	HAKODATE Goryokaku hospital teamA	Japan	Hokkaido
620718	Hakodate KOSEN	Japan	Hokkaido
470703	Hakodate Marukatsu Suisan	Japan	Hokkaido
960226	HAKONIWA	Japan	Hokkaido
290707	HAKUYO23	Japan	Tokyo
010301	HANABISHIHOTEL	Japan	Hokkaido
680124	Hanachu Molky Club	Japan	Tokyo
660522	HANNO MOLKKY CLUB	Japan	Saitama
640320	HAOHAO	Japan	Hokkaido
430321	haonijuumaru	Japan	Hokkaido
730603	Hapimoe	Japan	Hokkaido
530509	HAPPY MOON	Japan	Hokkaido
010201	HAPPY OUTSIDE BEAMS	Japan	Tokyo
600716	HAPPY ZUNZUNDA	Japan	Miyagi
860716	HARAGURO4	Japan	Hokkaido
570313	HARUNOSORA	Japan	Hokkaido
370215	HAYAMA	Japan	Kanagawa
760706	Hayashi Family	Japan	Hokkaido
200120	Hayashi-DanzoH bReaKers@Molky	Japan	Osaka
180618	Heiseido Pharmacy Molky Club	Japan	Fukuoka
960326	Hercules Nagasaki	Japan	Nagasaki
880618	hibiya molky club	Japan	Tokyo
740404	HIGASHI-IKE-BUKURO	Japan	Tokyo
730103	High Five	France	—
600116	Himap ALBATROSSI	Japan	Oita
510307	HIRATA MENTAMA SPORTS CLUB	Japan	Yamagata

III. Team ID H,I,J



Please note that your team's **Team ID** will be used during on-site check-in, so make sure to record it.
 The six-digit Team Number is structured as follows:
Group number (2 digits) + Number within the group (2 digits) + Court number for the first match (2 digits)

Team ID	Team Name	Nation	City
280506	Hiroshi	Japan	Hokkaido
100310	Hiroshima P smallkky	Japan	Hiroshima
920222	HiroShimane Dgumi	Japan	Shimane
950725	Hitoyoshi Peanuts	Japan	Kyoto
880118	HK Molkky - Avengers	Hong Kong	—
280106	HK Molkky - Breeze	Hong Kong	—
420120	HK Molkky - End Game	Hong Kong	—
760106	HK Molkky - HappyVibes	Hong Kong	—
790109	HK Molkky - Kung Fu Molkky	Hong Kong	—
830113	HK Molkky - PLK1	Hong Kong	—
770107	HK Molkky - PLK2	Hong Kong	—
890119	HMS Baton Mouche	Finland	—
820112	HMS Travelling Molkky with Backwoods Tranquillit	Finland	—
020302	HOKKAIDO HANSHIKAI	Japan	Hokkaido
810211	HOKKAIDO FIN KYO	Japan	Hokkaido
590415	Hokubi Molkky	Japan	Hokkaido
350213	HOKUDAI RETAR KAMUYCEP	Japan	Hokkaido
220622	HOKUTOSEI	Japan	Hokkaido
690225	HOKUTOSEI alc.	Japan	Hokkaido
160416	HONOBONO	Japan	Hokkaido
010401	HORIUCHI	Japan	Aichi
810611	hot hokubi	Japan	Hokkaido
930723	Hotenz	Japan	Tokyo
810111	HSM Molkky	France	—
520308	hutaba	Japan	Osaka
790409	HY.M.C teamA	Japan	Tokyo
130213	HY.M.C teamC	Japan	Tokyo

Team ID	Team Name	Nation	City
600316	icanuy A	Japan	Hokkaido
790209	icanuy B	Japan	Hokkaido
260604	ichigoya	Japan	Osaka
300608	iGo Gundan	Japan	Hokkaido
450101	Ikejiries	Japan	Tokyo
440122	IM	Japan	Tokyo
380316	IMABARIWEST HIGHSCHOOL MOLKKERS	Japan	Ehime
020702	imakane seinenkaigi	Japan	Hokkaido
260404	IMCA	Japan	Iwate
570713	Inazawa YU-kids club	Japan	Aichi
940324	Intelligent Fool	Japan	Toyama
630119	IQ nikkurs	Japan	Kanagawa
770207	IQOS LOVE	Japan	Hokkaido
060306	Ishigaki molkky N	Japan	Okinawa
120512	ISIKARI MEN	Japan	Hokkaido
190719	itochu fashion system	Japan	Tokyo
240602	ITTEKOI AKASAKA	Japan	Tokyo
200720	IWAMOL	Japan	Iwate
420620	Izumi steel works molkky club	Japan	Kagawa
340512	J's	Japan	Tokyo
550611	jack&usa	Japan	Gifu
130113	JaiLampi on Friday	Japan	Fukuoka
940624	jaja ohchu	Japan	Tokyo
650621	Japan Molkky Park	Japan	Gifu
530309	Jatkosota High School Molkky Club	Japan	Tokyo
400718	JP1 KING	Japan	Hokkaido
720302	JP1 SPECIAL	Japan	Hokkaido

III. Team ID K



Please note that your team's **Team ID** will be used during on-site check-in, so make sure to record it. The six-digit Team Number is structured as follows:
Group number (2 digits) + Number within the group (2 digits) + Court number for the first match (2 digits)

Team ID	Team Name	Nation	City
900120	K-MOLKKY	South Korea	—
610517	K's Family	Japan	Shizuoka
510707	KABUKI WARRIORS	Japan	Chiba
660422	KACHIGARASU	Japan	Saga
830213	Kajiya	Japan	Hokkaido
090209	KAKUTEI	Japan	Kyoto
890619	KAMAKURA 4-GENE	Japan	Kanagawa
460402	Kamakura BACCHUS	Japan	Tokyo
210121	Kamakura ZEN	Japan	Kanagawa
500106	KAMAKURAPPY	Japan	Kanagawa
760406	Kamelia SC	Japan	Nagasaki
770307	Kamidanomi	Japan	Tokyo
040704	KANAZAWA CULTURE AND SPORTS COMMISSION	Japan	Ishikawa
250503	KaneHashi	Japan	Hokkaido
160316	KANPAIDOU MEI – MAIKY	Japan	Hokkaido
510607	KANZAKIGAWA39	Japan	Osaka
750505	KARABAO	Japan	Hokkaido
130613	Kasaibashi Sauna Club	Japan	Tokyo
750205	KASHIWA CLOCK	Japan	Kanagawa
880218	KASHIWAUDON-KASHIWAMESHI	Japan	Fukuoka
800310	Katsushika Molkky Club	Japan	Tokyo
710601	Kaveri HiroShimane	Japan	Hiroshima
250703	Kawai gundan	Japan	Hokkaido
030503	KAWANISHI	Japan	Hyogo
440522	KAWANISHI PASSION 50	Japan	Hyogo
340212	KAWANISHI V	Japan	Osaka
910521	KAWATA molkky club	Japan	Shizuoka
520408	KEHI team	Japan	Hyogo
420720	KEI&HARU&	Japan	Hokkaido
470103	Keio Sports Press 42nd	Japan	Hokkaido
330511	KIMI TO MOLKKY	Japan	Tokyo
460202	KIMURA FAMILY	Japan	Hokkaido
860416	KINDAI WAKAYAMA	Japan	Osaka

Team ID	Team Name	Nation	City
950425	KINDZMOLKKAARI	Japan	Tokyo
690325	KING KANKARIN	Japan	Hokkaido
430121	KING OF MOLKKY	Japan	Tokyo
610217	Kingdom	Japan	Hokkaido
740704	Kiseki no Banana Dokokai	Japan	Saitama
620218	KISHUTAI SEI	Japan	Osaka
430421	KIT Molkky Team	Japan	Hokkaido
330311	Kitagou Molkky + löwkey	Japan	Tochigi
650221	KitamiOnions	Japan	Hokkaido
320610	Kiyota DE Molkky	Japan	Hokkaido
840514	KIZUKURI	Japan	Ibaraki
580114	KMBK	Japan	Tokyo
850515	KMJ	Japan	Hokkaido
370415	KOBAMOL FAMILY	Japan	Tokyo
230701	KOBE BLACKSWAN	Japan	Hyogo
510207	kojima udon	Japan	Kagawa
330111	Komitywa	Poland	—
410419	komolook	Japan	Kanagawa
270105	Konna&Koukku	Finland	—
070707	kskseven	Japan	Tokyo
830613	KTMC	Japan	Iwate
160616	KTMC 2nd	Japan	Iwate
580514	Kukunochi	Japan	Chiba
890319	KUL 47ers	Japan	Tokyo
690725	Kulu-Ya-Ku	Japan	Chiba
900720	kuramol	Japan	Okayama
560312	KUROWAKAI	Japan	Saitama
680424	Kushiro Molkky Club	Japan	Hokkaido
320210	Kymiläiset	Finland	—
780608	Kyoto Doseees	Japan	Kyoto
640220	Kyoto Nobishiro Fighters	Japan	Kyoto
380716	Kyudai gradaters	Japan	Chiba

III. Team ID L,M



Please note that your team's **Team ID** will be used during on-site check-in, so make sure to record it.
 The six-digit Team Number is structured as follows:
Group number (2 digits) + Number within the group (2 digits) + Court number for the first match (2 digits)

Team ID	Team Name	Nation	City
890419	L-THINKS	Japan	Saitama
450401	LAB MOLKKY	Japan	Tokyo
120712	Lantern	Japan	Chiba
480404	Layered	Japan	Aichi
780108	LE COEUR VENDEEN	France	—
870117	Les Claquettes Chaussettes	France	—
360114	Les Pagny-Mauges	France	—
500406	Liberal Molkkyers	Japan	Chiba
180318	LIGHT DE FIGHT	Japan	Gifu
640120	Light Music	Japan	Hokkaido
760506	Liitto Maatalous	Japan	Aichi
030303	Lilac	Japan	Ibarakai
930623	Little BOSS	Japan	Ishikawa
050405	Liver Sumo	Japan	Hokkaido
700326	LlamaShin	Japan	Hokkaido
440222	LOBE STAR	Czech Republic	—
870717	Loch North	Japan	Osaka
080608	LPM~Let's Play Molkky~	Japan	Tokyo
900620	Lyra	Japan	Tokyo

Team ID	Team Name	Nation	City
480304	M.M molkkers	Japan	Okayama
250103	Maestro	Finland	—
070107	MAKUHARI coLeTeT	Japan	Chiba
590615	mamimumemollky	Japan	Saitama
270505	MARCH	Japan	Tokyo
720702	mars dragon flame	Japan	Tokyo
380416	Marshal	Japan	Hokkaido
750405	marumoru34	Japan	Hokkaido
580714	Marunouchi Distri&IDP	Japan	Saitama
710701	MARUSHIN LOGISTICS	Japan	Hyogo
380216	MASE Gumi	Japan	Hokkaido
190319	masunosuke	Japan	Tokyo
610617	MC SAGAMIHARA	Japan	Kanagawa
590715	me YAKE	Japan	Kagawa
570113	Melooooody ver.2	Japan	Hokkaido
420520	mensore kitami	Japan	Hokkaido
680324	Mileage DANGO tour	Japan	Hiroshima
950625	milkyway	Japan	Aichi
730303	MIRACLE HIKKA	Japan	Hokkaido
660622	MIRACLES	Japan	Mie
240102	Miromesnil Croix de Loraine	France	—
850215	mispo_AU	Japan	Aichi
640620	MITAKA molkky	Japan	Tokyo
880718	mix juice	Japan	Hiroshima
820712	Mix Nuts	Japan	Toyama
560212	MIYATAKE NICES	Japan	Tokyo
540710	MizusaKids	Japan	Yamaguchi
440322	MK drinkers	Japan	Hokkaido

III. Team ID M



Please note that your team's **Team ID** will be used during on-site check-in, so make sure to record it. The six-digit Team Number is structured as follows:
Group number (2 digits) + Number within the group (2 digits) + Court number for the first match (2 digits)

Team ID	Team Name	Nation	City
940224	MK-Dragons	Japan	Kanagawa
600516	MM	Japan	Chiba
150515	MMC	Japan	Tokyo
310309	mo-chari matsu	Japan	Osaka
800210	Mochari-ume	Japan	Osaka
730203	Modo2024	Japan	Tokyo
560612	Moeller24	Japan	Hyogo
520608	moimoi	Japan	Hokkaido
640420	mokke mokke	Japan	Aichi
220122	MoL Solare	Japan	Tokyo
040104	MOLCCHA	Japan	Kyoto
060706	MOLGEE	Japan	Hyogo
890719	MOLGONZ HAKONE	Japan	Kanagawa
880418	MolkaariSannomiya	Japan	Hyogo
750105	Mölkky Bar Kids	United Kingdom	—
040604	Molkkyy du Soleil	Japan	Hyogo
270205	MOLKKY EDOGAWA	Japan	Tokyo
770407	MOLKKY HEROES	Japan	Chiba
300208	Molkkyy Hiroshima	Japan	Hiroshima
710301	molkky ishigakijima Q	Japan	Okinawa
400318	Molkkyy Ishigakijima Z	Japan	Okinawa
150415	MolkkY Knight	Japan	Yamagata
230201	Molkkyy Kumobayashi from TAIWAN	Chinese Taipei	—
190219	molkky kurisawa	Japan	Hokkaido
030103	Molkkyy Lab SETOUCHI	Japan	Hiroshima
910421	Molkkyy Machida-KleinBleu	Japan	Tokyo
020502	Molkkyy Revengers	Japan	Saga
030603	MOLKKY SETAGAYA plus Fab	Japan	Tokyo
080508	molkky SHOJI	Japan	Saitama
620318	MOLKKY TARO	Japan	Ibaraki

Team ID	Team Name	Nation	City
890519	Molkky University of Technology	Japan	Niigata
270605	Molkky Wazagen	Japan	Hokkaido
400618	molkky46	Japan	Saitama
250603	MoLLaB	Japan	Ibaraki
290507	mollbura !	Japan	Tokyo
430621	mollog	Japan	Aichi
230301	molocker	Japan	Kanagawa
550711	Molterra	Japan	Gifu
420420	MOLTIS TOKYO	Japan	Tokyo
370615	MOLU YAMADA	Japan	Hokkaido
040404	Möilulu TeamHAKODATE	Japan	Saitama
150315	mommy	Japan	Hokkaido
830513	MOMOASAGAO	Japan	Saitama
250403	MOMOQ	Japan	Fukuoka
170717	MONGOOOOSE CLAW	Japan	Osaka
580314	MONGOOOOSE FANG	Japan	Saitama
220422	MoritsAshikoshi	Japan	Osaka
050305	MoruHaras	Japan	Saitama
500506	MORUKURU	Japan	Aichi
780408	MORUO DOJO	Japan	Hokkaido
580214	MOSHIRI KORO KAMUI	Japan	Hokkaido
390317	Mossaly Molkky	Japan	Chiba
520208	MOTSUSHIGERU	Japan	Kumamoto
460302	MOUMOU EXSTASIES	Japan	Kanagawa
530109	MOUNTAIN LIONS	Japan	Tokyo
140314	muko2	Japan	Osaka
350613	Mukogawa molkky Mameshi-ba	Japan	Hyogo
560112	murakami farm	Japan	Hokkaido
520508	muscle molkkers A	Japan	Kanagawa
720202	My to Vypijem	Czech Republic	—
640720	myfamily	Japan	Iwate
690525	Mystic Mavericks	Japan	Hokkaido

III. Team ID N,O



Please note that your team's **Team ID** will be used during on-site check-in, so make sure to record it.
 The six-digit Team Number is structured as follows:
Group number (2 digits) + Number within the group (2 digits) + Court number for the first match (2 digits)

Team ID	Team Name	Nation	City	Team ID	Team Name	Nation	City
450201	Nagaoka molkky club	Japan	Tokyo	290107	Oh la la	France	—
900220	NAHMO COISA	Japan	Niigata	490205	OHBA MOLCAR'S	Japan	Kanagawa
790309	Nakagawa mini mol club	Japan	Nagano	180718	OHNO DREAM	Japan	Iwate
770707	NAKATA Molkky Club	Japan	Fukushima	540510	okamoto shinai family	Japan	Hyogo
600216	Nakky-----s	Japan	Hokkaido	470403	OKUSHIRI	Japan	Hokkaido
570413	Nanae molkky A	Japan	Hokkaido	130413	OLD SMASH	Japan	Osaka
960726	NANAE MOLKKY B	Japan	Hokkaido	240502	OMAKASE order1	Japan	Kyoto
390617	neighborhood-FIN	Japan	Hokkaido	920722	OMAKASE order2	Japan	Kyoto
490705	NEXT01	Japan	Kanagawa	950525	One Team	Japan	Osaka
120312	NFT Molkky Club	Japan	Aichi	840314	OodakaRoutoruzu	Japan	Aichi
590315	NGT50	Japan	Niigata	650721	Orange Streams	Japan	Tokyo
110211	NICHIGEKI	Japan	Gunma	470203	Orca	Japan	Saitama
410119	Nifty fifty	Australia	—	020202	Osaka Nipponbashi Pon Birch	Japan	Osaka
180118	Niigata Molkky Club	Japan	Niigata	540210	OSAKA SCORPIONS	Japan	Osaka
710101	NIJICON TEAM A	Japan	Tokyo	860116	Osuko Joku	Finland	—
720102	NIJICON TEAM B	Japan	Tokyo	030403	otobe mollky	Japan	Hokkaido
810511	NIKOYAMA	Japan	Kanagawa	940424	otopuke moruchan's	Japan	Hokkaido
140514	NINA	Japan	Chiba	440422	Owesome Cake	Japan	Hokkaido
930123	NIPPA PETANCO	Japan	Kanagawa	090109	Oyama Kosen Faculty Team	Japan	Tochigi
910621	NKNK-Veli	Japan	Shizuoka	820512	ozora sports recreation club	Japan	Hokkaido
670523	No Error	Japan	Chiba				
490105	NO RAMEN , NO LIFE	Japan	Tokyo				
830413	Nomibo	Japan	Osaka				
550111	NoMistake	Japan	Saitama				
240302	NY	Japan	Tokyo				
290607	NYAGERU	Japan	Hyogo				

III. Team ID P,Q,R



Please note that your team's **Team ID** will be used during on-site check-in, so make sure to record it.
 The six-digit Team Number is structured as follows:
Group number (2 digits) + Number within the group (2 digits) + Court number for the first match (2 digits)

Team ID	Team Name	Nation	City
700426	PANENKA	Japan	Gifu
160216	PASSIONE	Japan	Chiba
050205	PegachanTV	Japan	Fukuoka
470603	PEPAN'S	Japan	Hokkaido
470303	persimmonz	Japan	Mie
120212	Philip Denka	Japan	Hokkaido
060506	PIG BEN	Japan	Tokyo
270405	PINK TRAIN WORLD	Japan	Kanagawa
550511	PIYO GUNDAN	Japan	Fukuoka
430221	PLANET FINSKA	Australia	—
280206	PoMa Glanz	Japan	Aichi
100110	ponnnnnnnnnnnnnnn	Japan	Hokkaido
250203	pork beans	Japan	Aichi
480704	Poulet frit	Japan	Shizuoka
210721	POWER MOLKKY CLUB	Japan	Tokyo
170617	Praise	Japan	Hokkaido
390417	PRINCE OF MOLKKY	Japan	Chiba
340712	PRO-WRESTLING EZIGEN	Japan	Tokyo
190519	puikko	Japan	Tokyo
360214	PuiPuiMolky	Japan	Hokkaido
090309	Pullkin molmol	Japan	Tokyo
070607	pura vida !	Japan	Tokyo

Team ID	Team Name	Nation	City
660122	Quokka	Japan	Fukui
670723	Rakimo	Japan	Osaka
480204	RAKKYO powered by NTT Com Engineering	Japan	Kanagawa
940124	RAMOS	Japan	Hokkaido
540610	RANKING	Japan	Hokkaido
390717	Ranta Loch North	Japan	Shimane
050105	RATEL D.TY.Y	Japan	Tokyo
150715	RATEL R.T.Y.Y.Y	Japan	Kumamoto
530209	ReBoRN	Japan	Saitama
310509	red gorilla the world	Japan	Ehime
420320	Red Porks	Japan	Aichi
080308	RENAISSANCE Molky TEAM	Japan	Osaka
650421	Renoball	Japan	Tokyo
630719	Rikkyo	Japan	Saitama
670623	RINRINHARUHARU	Japan	Hokkaido
710201	RiRa 50s club	Finland	—
140414	ROPPONGI MOLKKY CLUB	Japan	Tokyo
310109	Rosengarten Rats Berlin 1	Germany	—
350113	Rosengarten Rats Berlin 2	Germany	—
830713	RUMOI GEK	Japan	Hokkaido
710401	Run,pepa!	Japan	Osaka

III. Team ID S



Please note that your team's **Team ID** will be used during on-site check-in, so make sure to record it.
 The six-digit Team Number is structured as follows:
Group number (2 digits) + Number within the group (2 digits) + Court number for the first match (2 digits)

Team ID	Team Name	Nation	City
030203	sakainetyougaku ob	Japan	Chiba
350413	SAKAMOTO'S 233	Japan	Tokyo
240402	SAKATA	Japan	Yamagata
100610	SAKATA MKKing's	Japan	Yamagata
620118	sakuraiorthodox	Japan	Toyama
330211	sakurambo	Japan	Aichi
100410	SAKURAN333 KUSUNOKI	Japan	Tokyo
060606	SAKURAN333 mayonnaise	Japan	Tokyo
220222	SAKURAN333ODANGO	Japan	Tokyo
150615	SAKURAN333SUKIYAKI	Japan	Tokyo
850615	SAMURAI AMICUS	Japan	Kanagawa
570313	Sanrio Cheers for Smiles	Japan	Kanagawa
910221	SANZUI	Japan	Tokyo
360414	Sapmed3	Japan	Hokkaido
210621	SAPPORO KANKU	Japan	Hokkaido
140214	Sapporo Marlins	Japan	Hokkaido
220322	Sapporo Medical University Junior	Japan	Hokkaido
070207	Sapporo Medical University Junior 2	Japan	Hokkaido
110611	SASK Condors	Japan	Tokyo
090409	sasse	Japan	Kanagawa
730503	SCATMAN☆HAJIME	Japan	Hokkaido
460502	SEED TOKACHI & CRAB eating CLUB	Japan	Hokkaido
440622	Sendai Jyo	Japan	Miyagi
810311	SENDAI MOLKKY HAYASHI RICE	Japan	Osaka
170117	Sendai Mollky Carry	Japan	Miyagi
130713	SFAT ISEHARA SC	Japan	Kanagawa
670223	Sfida F	Japan	Kanagawa
870317	Sfida M	Japan	Kanagawa
010701	SHELLYS	Japan	Kanagawa
340412	Shimamoto MC	Japan	Osaka
910721	SHIMBASHI×OMOMUKI	Japan	Saitama

Team ID	Team Name	Nation	City
280406	Shinagawa Equities	Japan	Tokyo
510507	Shining Drum White Birds	Japan	Hokkaido
350313	SHINSHU UNIVERSITY	Japan	Nagano
450601	SHINTOKU ONEALL+plus	Japan	Hokkaido
800610	SHOGE FRIENDS	Japan	Toyama
150115	SIMSONS	Japan	Saitama
390117	Sisu Team	Finland	—
330411	SK.Miracle	Japan	Hokkaido
740504	SKKBR	Japan	Saitama
170517	Skytms	Japan	Hokkaido
630619	Sniper	Japan	Nara
960626	SOKOSUKI	Japan	Hokkaido
590515	SORAMAME JAPAN	Japan	Hyogo
560412	Soratoshiba Molkky Club	Japan	Hokkaido
060406	sorezore no omoi	Japan	Hokkaido
820612	Spring Dogs	Japan	Kanagawa
560712	SSB	Japan	Tokyo
810411	STARMOL	Japan	Tokyo
930223	STeAK	Japan	Hyogo
540110	Suginami base chocolat	Japan	Tokyo
020102	Suginami Enjoy Molkky	Japan	Tokyo
140114	Suginami Molkky Club "Nori-Nori-2"	Japan	Tokyo
840614	Suginami MolkLove	Japan	Tokyo
540310	SUGUHENIZ	Japan	Shiga
210521	SUMIRE'S SMILE	Japan	Saitama
850315	sun visor enthusiast group	Japan	Hokkaido
060106	Sunshine	Japan	Fukushima
330711	SUNSPORTS	Japan	Hokkaido
450701	Super gambrrers	Japan	Tokyo
370115	Sydney Sails	Australia	—
940524	Syoshinsya	Japan	Hokkaido

Please note that your team's **Team ID** will be used during on-site check-in, so make sure to record it.
 The six-digit Team Number is structured as follows:
Group number (2 digits) + Number within the group (2 digits) + Court number for the first match (2 digits)

Team ID	Team Name	Nation	City
170417	T- molkkyTeamB	Japan	Tokyo
430721	T-Mölkku	Japan	Yamanashi
410719	T-ROLLERS	Japan	Aichi
070307	TAKEDA GUN	Japan	Hokkaido
260504	TAKENOKO Festival	Japan	Hokkaido
840714	Takenoyu Bekkan A	Japan	Tokyo
190119	Takenoyu-Bekkan B	Japan	Tokyo
780208	TANASHI3	Japan	Tokyo
350713	TASHINAMI	Japan	Tokyo
600616	TEAM SAKURA	Japan	Hokkaido
430521	Team Abegangu	Japan	Yamagata
620518	TEAM AIDA	Japan	Tokyo
120112	TEAM albatross	Japan	Tokyo
230501	team APOC plus	Japan	Aomori
350513	team bokoi	Japan	Hokkaido
110511	TEAM CREA	Japan	Hokkaido
460702	team dash	Japan	Ehime
550311	TEAM Dodgers	Japan	Hokkaido
740104	Team Estonia	Estonia	—
220522	Team Finland	Japan	Kanagawa
310709	TEAM GANIGARA	Japan	Tokyo
190419	team Hakodate Shimbun	Japan	Hokkaido
500206	Team Hakoppy	Japan	Hokkaido
920622	team HAPPY	Japan	Hokkaido

Team ID	Team Name	Nation	City
230101	TEAM HTB	Japan	Hokkaido
320110	TEAM ICHIOSHI	Japan	Hokkaido
150215	Team J with D	Japan	Tokyo
210421	Team KIBA-KOEN	Japan	Saitama
820212	Team Kiitos	Japan	Chiba
310609	TEAM KOYOU	Japan	Hyogo
670123	Team KURIBOU	Japan	Ibaraki
130313	team light hill	Japan	Tokyo
340112	Team Lokki	Finland	—
020602	Team Melo	Japan	Hokkaido
180218	TEAM MUROCK	Japan	Hokkaido
400218	Team Ojisan	Japan	Hokkaido
410519	team opanti LOVE	Japan	Hokkaido
140614	TEAM PINE-AME	Japan	Tokyo
050505	Team PONPONPON	Japan	Tokyo
750605	Team Red	Japan	Tokyo
900320	TEAM RYAN	Japan	Niigata
480104	team saikyo	Japan	Osaka
650121	team SEISHUN JACK	Japan	Ehime
630419	TEAM SENA	Japan	Tokyo
850415	team sika de sita	Japan	Tokyo
950125	TEAM TAIJIRO	Japan	Hokkaido
930423	Team TAKOJIZO	Japan	Kanagawa
660322	team terakoya	Japan	Hokkaido



Please note that your team's **Team ID** will be used during on-site check-in, so make sure to record it.
 The six-digit Team Number is structured as follows:
Group number (2 digits) + Number within the group (2 digits) + Court number for the first match (2 digits)

Team ID	Team Name	Nation	City
250303	TEAM TSUKA33	Japan	Hokkaido
550411	TEAM UNI	Japan	Chiba
530709	team waon	Japan	Tottori
230401	Team WORTH AGENCY	Japan	Fukuoka
410619	Team YUZU	Japan	Hokkaido
460602	Team-MUKAIKAZE	Japan	Kanagawa
050605	TENG HUT	Japan	Kanagawa
910121	TERUMAERS	Japan	Chiba
110711	TETSUMEN	Japan	Kanagawa
440722	TGS	Japan	Chiba
510407	THE BATTLEAX	Japan	Aomori
490305	The Bee's Knees	Japan	Chiba
560512	THE BIG EATERS	Japan	Osaka
380116	The French Compass	France	—
080208	The Season Fighter-TSF-	Japan	Miyagi
010101	The•Molkkass	Japan	Shiga
710501	Three K Two Y	Japan	Iwate
020402	Throw Life	Japan	Aichi
370515	TIIMI KARHU	Japan	Hokkaido
700626	TK ESPRESSIVO	Japan	Hokkaido
210321	TKA	Japan	Saitama
570613	TKR	Japan	Hokkaido
790609	T M NETWORK	Japan	Osaka
100510	Togoshi Unbeatable Mollky Club	Japan	Tokyo

Team ID	Team Name	Nation	City
700726	TOKACHI AOILO MOLKKY CLUB	Japan	Hokkaido
180518	Tokaido Ensens	Japan	Shizuoka
370715	Toku Cruise	Japan	Oita
320510	Tokyo East Wind	Japan	Tokyo
740304	TOKYO HANABI	Japan	Tokyo
520708	Tomato Molkky	Japan	Hyogo
050705	ToroKaka	Japan	Kanagawa
500306	Toshikan Bomber's	Japan	Tokyo
680224	TosuMolkkers S.O.K.S.K	Japan	Fukuoka
040304	TosuMölkkers T.D.M.Y.S	Japan	Saga
550211	TOTEC Molkky Club G	Japan	Tokyo
470503	TOTTORI SHIHANS	Japan	Tottori
860316	toveri	Japan	Aichi
720402	Toyama	Japan	Toyama
960126	Toyama Brave Thunders	Japan	Tokyo
570513	TOYO LUCKYS	Japan	Tokyo
770607	TOYOBO Taekwondo Molkky club	Japan	Fukui
760606	TPCM	Japan	Ibarakai
930523	Tricolore Nuggets	Japan	Tokyo
700526	Tsukuba Skittles MKRTS	Japan	Ibaraki
850715	Tsukuba Skittles MYJAN	Japan	Chiba
190619	tsuruga tanoshimolkkynokai	Japan	Fukui
100710	tsuuhuutei	Japan	Kanagawa
380516	TTSK	Japan	Aichi

III. Team ID U,V,W,Y,Z



Please note that your team's **Team ID** will be used during on-site check-in, so make sure to record it. The six-digit Team Number is structured as follows:
Group number (2 digits) + Number within the group (2 digits) + Court number for the first match (2 digits)

Team ID	Team Name	Nation	City
240202	Ukiha Board Game Club	Japan	Fukuoka
100210	UMA	Japan	Tottori
610717	Umbrella	Japan	Mie
960526	UmiFuko100	Japan	Chiba
770507	Umigame	Japan	Saitama
680524	UNIMARU	Japan	Hokkaido
740204	UNLUCKY	Japan	Saitama
010601	Uraholiday	Japan	Hokkaido
490405	Ushi to Hato	Japan	Ehime
410219	Utsunomiya Molx	Japan	Tochigi
260704	Viaton Molkky Club	Japan	Tokyo
080708	Victory OIKAWA	Japan	Hokkaido
130513	VistAA	Japan	Tokyo
360714	VIVID	Japan	Hokkaido
880518	vocosnergel	Japan	Hokkaido
740604	Wagaya	Japan	Hokkaido
930323	WAMoWAMo panic	Japan	Wakayama
620618	WANDA	Japan	Osaka
480504	warebow	Japan	Kanagawa
540410	waseda university aviation club	Japan	Kanagawa
270305	We Love Moomin	Japan	Hokkaido
300308	WHITE HILLS	Japan	Saitama
650521	Wisteria paddy crew	Japan	Tokyo
030703	Witty	Japan	Hokkaido
360514	Woo mol sankaku dan A	Japan	Tokyo
830313	Woo mol sankaku dan B	Japan	Tokyo
040504	Woo mol sankaku dan C	Japan	Tokyo

Team ID	Team Name	Nation	City
490605	yabukara stick	Japan	Hokkaido
300508	YACHIDAMO	Japan	Hokkaido
840214	yamadamura	Japan	Osaka
500606	Yamagata Tong Tong	Japan	Yamagata
940724	YAMAHANA INCALCIPE	Japan	Hokkaido
160516	YAMAHANA TASOGARE	Japan	Hokkaido
910321	YEBISU	Japan	Shiga
690425	YELLFTR	Japan	Hokkaido
920422	YELLN4	Japan	Hokkaido
820312	Yellow Hibiscus	Japan	Hokkaido
920322	yips shimizu gumi	Japan	Tokyo
870617	Yokohama Inti Raymers	Japan	Tokyo
280706	yomyom	Japan	Osaka
750705	YOSENTOPPA'S	Japan	Yamagata
140714	Yoshimol	Japan	Hokkaido
200620	yoshimoto molkkey club a	Japan	Kanagawa
060206	YOSHIMOTO MOLKkY CLUB B	Japan	Tokyo
220722	YOTSUYAKAI	Japan	Osaka
840414	YOU.FO Club Tokyo	Japan	Tokyo
800510	YUKUMOLKkYY	Japan	Okayama
320710	YURU MOLKkY	Japan	Aichi
950225	ZANGI STAR	Japan	Hokkaido
780308	ZEN	Japan	Hokkaido
340312	Zn brothers	Japan	Hokkaido

Group List



Preliminary Block A Place: Showa Park
予選Aブロック 場所: 昭和公園

GroupNo.	TeamID.	Team Name	Country
01	010101	The-Molkkass	Shiga
01	010201	HAPPY OUTSIDE BEAMS	Tokyo
01	010301	HANABISHIHOTEL	Hokkaido
01	010401	HORIUCHI	Aichi
01	010501	GURUMAN	Hokkaido
01	010601	Uraholiday	Hokkaido
01	010701	SHELLYS	Kanagawa

GroupNo.	TeamID.	Team Name	Country
05	050105	RATEL D.TY.Y	Tokyo
05	050205	PegachanTV	Fukuoka
05	050305	MoruHaras	Saitama
05	050405	Liver Sumo	Hokkaido
05	050505	Team PONPONPON	Tokyo
05	050605	TENG HUT	Kanagawa
05	050705	ToroKaka	Kanagawa

GroupNo.	TeamID.	Team Name	Country
09	090109	Oyama Kosen Faculty Team	Tochigi
09	090209	KAKUTEI	Kyoto
09	090309	Pullkin molmol	Tokyo
09	090409	sasse	Kanagawa
09	090509	BLACK ALIENS	Oita
09	090609	fanfare	Hokkaido
09	090709	GOOD FRIENDS	Hokkaido

GroupNo.	TeamID.	Team Name	Country
02	020102	Suginami Enjoy Molkky	Tokyo
02	020202	Osaka Nipponbashi Pon Birch	Osaka
02	020302	HOKKAIDO HANSHIKAI	Hokkaido
02	020402	Throw Life	Aichi
02	020502	Molkky Revengers	Saga
02	020602	Team Melo	Hokkaido
02	020702	imakane seinenkaigi	Hokkaido

GroupNo.	TeamID.	Team Name	Country
06	060106	Sunshine	Fukushima
06	060206	YOSHIMOTO MOLKKY CLUB B	Tokyo
06	060306	Ishigaki molkky N	Okinawa
06	060406	sorezore no omoi	Hokkaido
06	060506	PIG BEN	Tokyo
06	060606	SAKURAN333 mayonnaise	Tokyo
06	060706	MOLGEE	Hyogo

GroupNo.	TeamID.	Team Name	Country
10	100110	ponnnnnnnnnnnnnnn	Hokkaido
10	100210	UMA	Tottori
10	100310	Hiroshima P smallkky	Hiroshima
10	100410	SAKURAN333 KUSUNOKI	Tokyo
10	100510	Togoshi Unbeatable Molkky Club	Tokyo
10	100610	SAKATA MKKing's	Yamagata
10	100710	tsuuhuutei	Kanagawa

GroupNo.	TeamID.	Team Name	Country
03	030103	Molkky Lab SETOUCHI	Hiroshima
03	030203	sakainetyougaku ob	Chiba
03	030303	Lilac	Ibarakai
03	030403	otobe molkky	Hokkaido
03	030503	KAWANISHI	Hyogo
03	030603	MOLKKY SETAGAYA plus Fab	Tokyo
03	030703	Witty	Hokkaido

GroupNo.	TeamID.	Team Name	Country
07	070107	MAKUHARI coLeTeT	Chiba
07	070207	Sapporo Medical University Junior 2	Hokkaido
07	070307	TAKEDA GUN	Hokkaido
07	070407	BOYCOTT MONDAYS	Tokyo
07	070507	GenerationMix	Chiba
07	070607	pura vida !	Tokyo
07	070707	kskseven	Tokyo

GroupNo.	TeamID.	Team Name	Country
11	110111	Ebetsu Molkky	Hokkaido
11	110211	NICHIGEKI	Gunma
11	110311	Docon	Hokkaido
11	110411	FMIRUKA MOLKKY CLUB	Hokkaido
11	110511	TEAM CREA	Hokkaido
11	110611	SASK Condors	Tokyo
11	110711	TETSUMEN	Kanagawa

GroupNo.	TeamID.	Team Name	Country
04	040104	MOLCCHA	Kyoto
04	040204	Good Molkking Guys	Saitama
04	040304	TosuMolkkers T.D.M.Y.S	Saga
04	040404	Mölulu TeamHAKODATE	Saitama
04	040504	Woo mol sankaku dan C	Tokyo
04	040604	Molkky du Soleil	Hyogo
04	040704	KANAZAWA CULTURE AND SPORTS COMMISSION	Ishikawa

GroupNo.	TeamID.	Team Name	Country
08	080108	Crazy Turtles	Hokkaido
08	080208	The Season Fighter-TSF-	Miyagi
08	080308	RENAISSANCE Molkky TEAM	Osaka
08	080408	Defence Back Ohtaki	Hokkaido
08	080508	molkky SHOJI	Saitama
08	080608	LPM~Let's Play Molkky~	Tokyo
08	080708	Victory OIKAWA	Hokkaido

GroupNo.	TeamID.	Team Name	Country
12	120112	TEAM albatross	Tokyo
12	120212	Philip Denka	Hokkaido
12	120312	NFT Molkky Club	Aichi
12	120412	HAGAKURE	Chiba
12	120512	ISIKARI MEN	Hokkaido
12	120612	fomitetsu	Saitama
12	120712	Lantern	Chiba

Group List



GroupNo.	TeamID.	Team Name	Country
13	130113	JaiLampi on Friday	Fukuoka
13	130213	HY.M.C teamC	Tokyo
13	130313	team light hill	Tokyo
13	130413	OLD SMASH	Osaka
13	130513	VistAA	Tokyo
13	130613	Kasaibashi Sauna Club	Tokyo
13	130713	SFAT ISEHARA SC	Kanagawa

GroupNo.	TeamID.	Team Name	Country
17	170117	Sendai Molkky Carry	Miyagi
17	170217	cokes	Yamaguchi
17	170317	FINDING FUNDS	Kyoto
17	170417	T- molkkyTeamB	Tokyo
17	170517	Skytms	Hokkaido
17	170617	Praise	Hokkaido
17	170717	MONGOOOOSE CLAW	Osaka

GroupNo.	TeamID.	Team Name	Country
21	210121	Kamakura ZEN	Kanagawa
21	210221	BOBO lu	Nagasaki
21	210321	TKA	Saitama
21	210421	Team KIBA-KOEN	Saitama
21	210521	SUMIRE'S SMILE	Saitama
21	210621	SAPPORO KANKU	Hokkaido
21	210721	POWER MOLKKY CLUB	Tokyo

GroupNo.	TeamID.	Team Name	Country
14	140114	Suginami Molkky Club "Nori-Nori-2"	Tokyo
14	140214	Sapporo Marlins	Hokkaido
14	140314	muko2	Osaka
14	140414	ROPPONGI MOLKKY CLUB	Tokyo
14	140514	NINA	Chiba
14	140614	TEAM PINE-AME	Tokyo
14	140714	Yoshimol	Hokkaido

GroupNo.	TeamID.	Team Name	Country
18	180118	Niigata Molkky Club	Niigata
18	180218	TEAM MUROCK	Hokkaido
18	180318	LIGHT DE FIGHT	Gifu
18	180418	BAIKA Classic	Osaka
18	180518	Tokaido Ensens	Shizuoka
18	180618	Heiseido Pharmacy Molkky Club	Fukuoka
18	180718	OHNO DREAM	Iwate

GroupNo.	TeamID.	Team Name	Country
22	220122	MoL Solare	Tokyo
22	220222	SAKURAN333ODANGO	Tokyo
22	220322	Sapporo Medical University Junior	Hokkaido
22	220422	MoritsAshikoshi	Osaka
22	220522	Team Finland	Kanagawa
22	220622	HOKUTOSEI	Hokkaido
22	220722	YOTSUYAKAI	Osaka

GroupNo.	TeamID.	Team Name	Country
15	150115	SIMSONS	Saitama
15	150215	Team J with D	Tokyo
15	150315	mommy	Hokkaido
15	150415	MolkkY Knight	Yamagata
15	150515	MMC	Tokyo
15	150615	SAKURAN333SUKIYAKI	Tokyo
15	150715	RATEL R.T.Y.Y.Y	Kumamoto

GroupNo.	TeamID.	Team Name	Country
19	190119	Takenoyu-Bekkan B	Tokyo
19	190219	molkky kurisawa	Hokkaido
19	190319	masunosuke	Tokyo
19	190419	team Hakodate Shimbun	Hokkaido
19	190519	puikko	Tokyo
19	190619	tsuruga tanoshimolkkynokai	Fukui
19	190719	itochu fashion system	Tokyo

GroupNo.	TeamID.	Team Name	Country
16	160116	coco-hari molkky club	Nagano
16	160216	PASSIONE	Chiba
16	160316	KANPAIDOUMEI –MAIKY	Hokkaido
16	160416	HONOBONO	Hokkaido
16	160516	YAMAHANA TASOGARE	Hokkaido
16	160616	KTMC 2nd	Iwate
16	160716	Fukutsu MC	Fukuoka

GroupNo.	TeamID.	Team Name	Country
20	200120	Hayashi-DanzoH bReaKers@Mölkky	Osaka
20	200220	chee	Tokyo
20	200320	Chita molkky club	Aichi
20	200420	Gosalo Boys	Hokkaido
20	200520	co3co SP	Osaka
20	200620	yoshimoto molkkey club a	Kanagawa
20	200720	IWAMOL	Iwate

Group List



Preliminary Block B Place: Showa Park

予選Bブロック 場所：昭和公園

GroupNo.	TeamID.	Team Name	Country
23	230101	TEAM HTB	Hokkaido
23	230201	Molcky Kumobayashi from TAIWAN	Chinese Taipei
23	230301	molocker	Kanagawa
23	230401	Team WORTH AGENCY	Fukuoka
23	230501	team APOC plus	Aomori
23	230601	bone heas	Hokkaido
23	230701	KOBE BLACKSWAN	Hyogo

GroupNo.	TeamID.	Team Name	Country
27	270105	Konna&Koukku	Finland
27	270205	MOLKKY EDOGAWA	Tokyo
27	270305	We Love Moomin	Hokkaido
27	270405	PINK TRAIN WORLD	Kanagawa
27	270505	MARCH	Tokyo
27	270605	Molcky Wazagen	Hokkaido
27	270705	Black Panthers	Osaka

GroupNo.	TeamID.	Team Name	Country
31	310109	Rosengarten Rats Berlin 1	Germany
31	310209	Fujita Geshuku OG	Iwate
31	310309	mo-chari matsu	Osaka
31	310409	2kai-z	Hyogo
31	310509	red gorilla the world	Ehime
31	310609	TEAM KOYOU	Hyogo
31	310709	TEAM GANIGARA	Tokyo

GroupNo.	TeamID.	Team Name	Country
24	240102	Miromesnil Croix de Loraine	France
24	240202	Ukiha Board Game Club	Fukuoka
24	240302	NY	Tokyo
24	240402	SAKATA	Yamagata
24	240502	OMAKASE order1	Kyoto
24	240602	ITTEKOI AKASAKA	Tokyo
24	240702	A-tie	Tokyo

GroupNo.	TeamID.	Team Name	Country
28	280106	HK Molkky - Breeze	Hong Kong
28	280206	PoMa Glanz	Aichi
28	280306	DeMB	Kanagawa
28	280406	Shinagawa Equities	Tokyo
28	280506	Hiroshi	Hokkaido
28	280606	abagakari	Hokkaido
28	280706	yomyom	Osaka

GroupNo.	TeamID.	Team Name	Country
32	320110	TEAM ICHIOSHI	Hokkaido
32	320210	Kymiläiset	Finland
32	320310	CONSASAPO KURI	Hokkaido
32	320410	AshiMol	Kanagawa
32	320510	Tokyo East Wind	Tokyo
32	320610	Kiyota DE Molkky	Hokkaido
32	320710	YURU MOLKKY	Aichi

GroupNo.	TeamID.	Team Name	Country
25	250103	Maestro	Finland
25	250203	pork beans	Aichi
25	250303	TEAM TSUKA33	Hokkaido
25	250403	MOMOQ	Fukuoka
25	250503	KaneHashi	Hokkaido
25	250603	MoLLaB	Ibaraki
25	250703	Kawai gundan	Hokkaido

GroupNo.	TeamID.	Team Name	Country
29	290107	Oh la la	France
29	290207	Aurora	Saitama
29	290307	aamokk	Aichi
29	290407	Eight days off a week	Osaka
29	290507	mollbura !	Tokyo
29	290607	NYAGERU	Hyogo
29	290707	HAKUYO23	Tokyo

GroupNo.	TeamID.	Team Name	Country
33	330111	Komitywa	Poland
33	330211	sakurambo	Aichi
33	330311	Kitagou Molkky + löwkey	Tochigi
33	330411	SK.Miracle	Hokkaido
33	330511	KIMI TO MOLKKY	Tokyo
33	330611	coelacanth	Osaka
33	330711	SUNSPORTS	Hokkaido

GroupNo.	TeamID.	Team Name	Country
26	260104	Dwunastka MM	Poland
26	260204	Bar_PIGEON	Chiba
26	260304	gojomol	Hokkaido
26	260404	IMCA	Iwate
26	260504	TAKENOKO Festival	Hokkaido
26	260604	ichigoya	Osaka
26	260704	Viaton Molkky Club	Tokyo

GroupNo.	TeamID.	Team Name	Country
30	300108	Finskaros Gold	Australia
30	300208	Molcky Hiroshima	Hiroshima
30	300308	WHITE HILLS	Saitama
30	300408	EMUCHIRU	Saitama
30	300508	YACHIDAMO	Hokkaido
30	300608	iGo Gundan	Hokkaido
30	300708	FUURINKAZAN	Aichi

GroupNo.	TeamID.	Team Name	Country
34	340112	Team Lokki	Finland
34	340212	KAWANISHI V	Osaka
34	340312	Zn brothers	Hokkaido
34	340412	Shimamoto MC	Osaka
34	340512	J's	Tokyo
34	340612	FURU	Saitama
34	340712	PRO-WRESTLING EZIGEN	Tokyo

Group List



GroupNo.	TeamID.	Team Name	Country
35	350113	Rosengarten Rats Berlin 2	Germany
35	350213	HOKUDAI RETAR KAMUYCEP	Hokkaido
35	350313	SHINSHU UNIVERSITY	Nagano
35	350413	SAKAMOTO'S 233	Tokyo
35	350513	team bokoi	Hokkaido
35	350613	Mukogawa molkky Mameshi-ba	Hyogo
35	350713	TASHINAMI	Tokyo

GroupNo.	TeamID.	Team Name	Country
39	390117	Sisu Team	Finland
39	390217	Asia University Staff Molkky Club	Tokyo
39	390317	Mossaly Molkky	Chiba
39	390417	PRINCE OF MOLKKY	Chiba
39	390517	Daimonkanpaidoumei	Hokkaido
39	390617	neighborhood-FIN	Hokkaido
39	390717	Ranta Loch North	Shimane

GroupNo.	TeamID.	Team Name	Country
43	430121	KING OF MOLKKY	Tokyo
43	430221	PLANET FINSKA	Australia
43	430321	haonijuumaru	Hokkaido
43	430421	KIT Molkky Team	Hokkaido
43	430521	Team Abegangu	Yamagata
43	430621	mollog	Aichi
43	430721	T-Mölkku	Yamanashi

GroupNo.	TeamID.	Team Name	Country
36	360114	Les Pagny-Mauges	France
36	360214	PuiPuiMolkky	Hokkaido
36	360314	Ankka_aigamo	Kyoto
36	360414	Sapmed3	Hokkaido
36	360514	Woo mol sankaku dan A	Tokyo
36	360614	DARWINIANSEA	Osaka
36	360714	VIVID	Hokkaido

GroupNo.	TeamID.	Team Name	Country
40	400118	Finskaroo Green	Australia
40	400218	Team Ojisan	Hokkaido
40	400318	Molkky Ishigakijima Z	Okinawa
40	400418	Chii Mol	Akita
40	400518	DOIRYOU ver.World	Hokkaido
40	400618	molkky46	Saitama
40	400718	JP1 KING	Hokkaido

GroupNo.	TeamID.	Team Name	Country
44	440122	IM	Tokyo
44	440222	LOBE STAR	Czech Republic
44	440322	MK drinkers	Hokkaido
44	440422	Owesome Cake	Hokkaido
44	440522	KAWANISHI PASSION 50	Hyogo
44	440622	Sendai Jyo	Miyagi
44	440722	TGS	Chiba

GroupNo.	TeamID.	Team Name	Country
37	370115	Sydney Sails	Australia
37	370215	HAYAMA	Kanagawa
37	370315	DUNMOK	Aichi
37	370415	KOBAMOL FAMILY	Tokyo
37	370515	TIIMI KARHU	Hokkaido
37	370615	MOLU YAMADA	Hokkaido
37	370715	Toku Cruise	Oita

GroupNo.	TeamID.	Team Name	Country
41	410119	Nifty fifty	Australia
41	410219	Utsunomiya Molx	Tochigi
41	410319	Aomori Joyful Molkky PaB	Aomori
41	410419	komolook	Kanagawa
41	410519	team opanti LOVE	Hokkaido
41	410619	Team YUZU	Hokkaido
41	410719	T-ROLLERS	Aichi

GroupNo.	TeamID.	Team Name	Country
38	380116	The French Compass	France
38	380216	MASE Gumi	Hokkaido
38	380316	IMABARIWEST HIGHSCHOOL MOLKKERS	Ehime
38	380416	Marshal	Hokkaido
38	380516	TTSK	Aichi
38	380616	FUN sports club	Tokyo
38	380716	Kyudai graduaters	Chiba

GroupNo.	TeamID.	Team Name	Country
42	420120	HK Molkky - End Game	Hong Kong
42	420220	35PT-C	Tokyo
42	420320	Red Porks	Aichi
42	420420	MOLTIS TOKYO	Tokyo
42	420520	mensore kitami	Hokkaido
42	420620	Izumi steel works molkky club	Kagawa
42	420720	KEI&HARU&	Hokkaido

Group List



Preliminary Block C Place: National Institute of Technology, Hakodate College
 予選Cブロック 場所: 函館工業高等専門学校

GroupNo.	TeamID.	Team Name	Country
45	450101	Ikejiries	Tokyo
45	450201	Nagaoka molkky club	Tokyo
45	450301	cogoce Bee	Osaka
45	450401	LAB MOLKKY	Tokyo
45	450501	AZUMI GATTARO	Nagano
45	450601	SHINTOKU ONEALL+plus	Hokkaido
45	450701	Super gambbers	Tokyo

GroupNo.	TeamID.	Team Name	Country
49	490105	NO RAMEN , NO LIFE	Tokyo
49	490205	OHBA MOLCAR'S	Kanagawa
49	490305	The Bee's Knees	Chiba
49	490405	Ushi to Hato	Ehime
49	490505	blue note	Mie
49	490605	yabukara stick	Hokkaido
49	490705	NEXT01	Kanagawa

GroupNo.	TeamID.	Team Name	Country
53	530109	MOUNTAIN LIONS	Tokyo
53	530209	ReBoRN	Saitama
53	530309	Jatkosota High School Molkky Club	Tokyo
53	530409	3KY molkkyers	Hokkaido
53	530509	HAPPY MOON	Hokkaido
53	530609	Easy peasy Japanesy	Hokkaido
53	530709	team waon	Tottori

GroupNo.	TeamID.	Team Name	Country
46	460102	Cinderella express	Kochi
46	460202	KIMURA FAMILY	Hokkaido
46	460302	MOUMOU EXSTASIES	Kanagawa
46	460402	Kamakura BACCHUS	Tokyo
46	460502	SEED TOKACHI & CRAB eating CLUB	Hokkaido
46	460602	Team-MUKAIKAZE	Kanagawa
46	460702	team dash	Ehime

GroupNo.	TeamID.	Team Name	Country
50	500106	KAMAKURAPPY	Kanagawa
50	500206	Team Hakoppy	Hokkaido
50	500306	Toshikan Bomber's	Tokyo
50	500406	Liberal Molkkyers	Chiba
50	500506	MORUKURU	Aichi
50	500606	Yamagata Tong Tong	Yamagata
50	500706	Fuchu-mol 38	Tokyo

GroupNo.	TeamID.	Team Name	Country
54	540110	Suginami base chocolat	Tokyo
54	540210	OSAKA SCORPIONS	Osaka
54	540310	SUGUHEN'IZ	Shiga
54	540410	waseda university aviation club	Kanagawa
54	540510	okamoto shinai family	Hyogo
54	540610	RANKING	Hokkaido
54	540710	MizusaKids	Yamaguchi

GroupNo.	TeamID.	Team Name	Country
47	470103	Keio Sports Press 42nd	Hokkaido
47	470203	Orca	Saitama
47	470303	persimmonz	Mie
47	470403	OKUSHIRI	Hokkaido
47	470503	TOTTORI SHIHANS	Tottori
47	470603	PEPAN'S	Hokkaido
47	470703	Hakodate Marukatsu Suisan	Hokkaido

GroupNo.	TeamID.	Team Name	Country
51	510107	gambbers1	Tokyo
51	510207	kojima udon	Kagawa
51	510307	HIRATA MENTAMA SPORTS CLUB	Yamagata
51	510407	THE BATTLEAX	Aomori
51	510507	Shining Drum White Birds	Hokkaido
51	510607	KANZAKIGAWA39	Osaka
51	510707	KABUKI WARRIORS	Chiba

GroupNo.	TeamID.	Team Name	Country
55	550111	NoMistake	Saitama
55	550211	TOTEC Molkky Club G	Tokyo
55	550311	TEAM Dodgers	Hokkaido
55	550411	TEAM UNI	Chiba
55	550511	PIYO GUNDAN	Fukuoka
55	550611	jack & usa	Gifu
55	550711	Molterra	Gifu

GroupNo.	TeamID.	Team Name	Country
48	480104	team saikyo	Osaka
48	480204	AKKYO powered by NTT Com Engineering	Kanagawa
48	480304	M.M molkkers	Okayama
48	480404	Layered	Aichi
48	480504	warebow	Kanagawa
48	480604	GAMAGOORI MOLKKERS	Aichi
48	480704	Poulet frit	Shizuoka

GroupNo.	TeamID.	Team Name	Country
52	520108	BEER POWERS	Niigata
52	520208	MOTSUSHIGERU	Kumamoto
52	520308	hutaba	Osaka
52	520408	KEHI team	Hyogo
52	520508	muscle molkkers A	Kanagawa
52	520608	moimoi	Hokkaido
52	520708	Tomato Molkky	Hyogo

GroupNo.	TeamID.	Team Name	Country
56	560112	murakami farm	Hokkaido
56	560212	MIYATAKE NICES	Tokyo
56	560312	KUROWAKAI	Saitama
56	560412	Soratoshiba Molkky Club	Hokkaido
56	560512	THE BIG EATERS	Osaka
56	560612	Moeller24	Hyogo
56	560712	SSB	Tokyo

Group List



GroupNo.	TeamID.	Team Name	Country
57	570113	Melooooody ver.2	Hokkaido
57	570213	ETUDERS	Shiga
57	570313	HARUNOSORA	Hokkaido
57	570413	Nanae molkky A	Hokkaido
57	570513	TOYO LUCKYS	Tokyo
57	570613	TKR	Hokkaido
57	570713	Inazawa YU-kids club	Aichi

GroupNo.	TeamID.	Team Name	Country
61	610117	CABUCHANS	Hokkaido
61	610217	Kingdom	Hokkaido
61	610317	CoARK	Kanagawa
61	610417	ASAI Germanium	Hokkaido
61	610517	K's Family	Shizuoka
61	610617	MC SAGAMIHARA	Kanagawa
61	610717	Umbrella	Mie

GroupNo.	TeamID.	Team Name	Country
65	650121	team SEISHUN JACK	Ehime
65	650221	KitamiOnions	Hokkaido
65	650321	DMC	Saitama
65	650421	Renoball	Tokyo
65	650521	Wisteria paddy crew	Tokyo
65	650621	Japan Molkky Park	Gifu
65	650721	Orange Streams	Tokyo

GroupNo.	TeamID.	Team Name	Country
58	580114	KMBK	Tokyo
58	580214	MOSHIRI KORO KAMUI	Hokkaido
58	580314	MONGOOOSE FANG	Saitama
58	580414	Co duck	Tokyo
58	580514	Kukunochi	Chiba
58	580614	Fudooka Molkky	Saitama
58	580714	Marunouchi Distri&IDP	Saitama

GroupNo.	TeamID.	Team Name	Country
62	620118	sakuraiorthodox	Toyama
62	620218	KISHUTAISEI	Osaka
62	620318	MOLKKY TARO	Ibaraki
62	620418	Ankka_Terastal	Kyoto
62	620518	TEAM AIDA	Tokyo
62	620618	WANDA	Osaka
62	620718	Hakodate KOSEN	Hokkaido

GroupNo.	TeamID.	Team Name	Country
66	660122	Quokka	Fukui
66	660222	Bernese Mountain Molkky	Chiba
66	660322	team terakoya	Hokkaido
66	660422	KACHIGARASU	Saga
66	660522	HANNO MOLKKY CLUB	Saitama
66	660622	MIRACLES	Mie
66	660722	ERDINGER's	Saitama

GroupNo.	TeamID.	Team Name	Country
59	590115	HAKODATE Goryokaku hospital teamA	Hokkaido
59	590215	BIWAKO Doughnuts Hole	Tokyo
59	590315	NGT50	Niigata
59	590415	Hokubi Molkky	Hokkaido
59	590515	SORAMAME JAPAN	Hyogo
59	590615	mamimumemollky	Saitama
59	590715	me YAKE	Kagawa

GroupNo.	TeamID.	Team Name	Country
63	630119	IQ nikkurs	Kanagawa
63	630219	arcana	Hokkaido
63	630319	DABISUKE ZOO YAMATO	Hokkaido
63	630419	TEAM SENA	Tokyo
63	630519	Ankka Mixture	Kyoto
63	630619	Sniper	Nara
63	630719	Rikkyo	Saitama

GroupNo.	TeamID.	Team Name	Country
67	670123	Team KURIBOU	Ibaraki
67	670223	Sfida F	Kanagawa
67	670323	Hakodate goryokaku hospital B	Hokkaido
67	670423	DAISANDAI JAWS	Kyoto
67	670523	No Error	Chiba
67	670623	RINRINHARUHARU	Hokkaido
67	670723	Rakimo	Osaka

GroupNo.	TeamID.	Team Name	Country
60	600116	Himap ALBATROSSI	Oita
60	600216	Nakky-----s	Hokkaido
60	600316	icanuy A	Hokkaido
60	600416	FERNANDO.K	Hokkaido
60	600516	MM	Chiba
60	600616	TEAM SAKURA	Hokkaido
60	600716	HAPPY ZUNZUNDA	Miyagi

GroupNo.	TeamID.	Team Name	Country
64	640120	Light Music	Hokkaido
64	640220	Kyoto Nobishiro Fighters	Kyoto
64	640320	HAOHAO	Hokkaido
64	640420	mokke mokke	Aichi
64	640520	Consadole Supporter Molkky CLUB	Hokkaido
64	640620	MITAKA molkky	Tokyo
64	640720	myfamily	Iwate

GroupNo.	TeamID.	Team Name	Country
68	680124	Hanachu Molkky Club	Tokyo
68	680224	TosuMolkkers S.O.K.S.K	Fukuoka
68	680324	Mileage DANGO tour	Hiroshima
68	680424	Kushiro Molkky Club	Hokkaido
68	680524	UNIMARU	Hokkaido
68	680624	DYUbee	Chiba
68	680724	Back Exstation 45	Miyagi

Group List



Preliminary Block D Place: National Institute of Technology, Hakodate College

予選Dブロック 場所: 函館工業高等専門学校

GroupNo.	TeamID.	Team Name	Country
69	690125	Country Stand	Tokyo
69	690225	HOKUTOSEI alc.	Hokkaido
69	690325	KING KANKARIN	Hokkaido
69	690425	YELLFTR	Hokkaido
69	690525	Mystic Mavericks	Hokkaido
69	690625	C2 Quartet	Chiba
69	690725	Kulu-Ya-Ku	Chiba

GroupNo.	TeamID.	Team Name	Country
71	710101	NIJICON TEAM A	Tokyo
71	710201	RiRa 50s club	Finland
71	710301	molkky ishigakijima Q	Okinawa
71	710401	Run,pepa!	Osaka
71	710501	Three K Two Y	Iwate
71	710601	Kaveri HiroShimane	Hiroshima
71	710701	MARUSHIN LOGISTICS	Hyogo

GroupNo.	TeamID.	Team Name	Country
75	750105	Mölkky Bar Kids	United Kingdom
75	750205	KASHIWA CLOCK	Kanagawa
75	750305	aile	Hokkaido
75	750405	marumoru34	Hokkaido
75	750505	KARABAO	Hokkaido
75	750605	Team Red	Tokyo
75	750705	YOSENTOPPA'S	Yamagata

GroupNo.	TeamID.	Team Name	Country
70	700126	Central Japan	Aichi
70	700226	Arabiki Nuts	Osaka
70	700326	LlamaShin	Hokkaido
70	700426	PANENKA	Gifu
70	700526	Tsukuba Skittles MKRTS	Ibaraki
70	700626	TK ESPRESSIVO	Hokkaido
70	700726	TOKACHI AOILO MOLKKY CLUB	Hokkaido

GroupNo.	TeamID.	Team Name	Country
72	720102	NIJICON TEAM B	Tokyo
72	720202	My to Vypijem	Czech Republic
72	720302	JP1 SPECIAL	Hokkaido
72	720402	Toyama	Toyama
72	720502	hadashikozo	Kanagawa
72	720602	Bacchus	Tokyo
72	720702	mars dragon flame	Tokyo

GroupNo.	TeamID.	Team Name	Country
76	760106	HK Molkky - HappyVibes	Hong Kong
76	760206	CLIFF CLUB	Tokyo
76	760306	Chiba Seminar	Kanagawa
76	760406	Kamelia SC	Nagasaki
76	760506	Liitto Maatalous	Aichi
76	760606	TPCM	Ibaraki
76	760706	Hayashi Family	Hokkaido

GroupNo.	TeamID.	Team Name	Country
73	730103	High Five	France
73	730203	Modo2024	Tokyo
73	730303	MIRACLE HIKKA	Hokkaido
73	730403	Fukushima Molkky Club	Fukushima
73	730503	SCATMAN☆HAJIME	Hokkaido
73	730603	Hapimoe	Hokkaido
73	730703	CCNG	Kanagawa

GroupNo.	TeamID.	Team Name	Country
77	770107	HK Molkky - PLK2	Hong Kong
77	770207	IQOS LOVE	Hokkaido
77	770307	Kamidonomi	Tokyo
77	770407	MOLKKY HEROES	Chiba
77	770507	Umigame	Saitama
77	770607	TOYOBO Taekwondo Molkky club	Fukui
77	770707	NAKATA Molkky Club	Fukushima

GroupNo.	TeamID.	Team Name	Country
74	740104	Team Estonia	Estonia
74	740204	UNLUCKY	Saitama
74	740304	TOKYO HANABI	Tokyo
74	740404	HIGASHI-IKE-BUKURO	Tokyo
74	740504	SKKBR	Saitama
74	740604	Wagaya	Hokkaido
74	740704	Kiseki no Banana Dokokai	Saitama

GroupNo.	TeamID.	Team Name	Country
78	780108	LE COEUR VENDEEN	France
78	780208	TANASHI3	Tokyo
78	780308	ZEN	Hokkaido
78	780408	MORUO DOJO	Hokkaido
78	780508	fernando.B	Hokkaido
78	780608	Kyoto Doseeees	Kyoto
78	780708	F.UEDA	Shiga

Group List



GroupNo.	TeamID.	Team Name	Country
79	790109	HK Molkky - Kung Fu Molkky	Hong Kong
79	790209	icanuy B	Hokkaido
79	790309	Nakagawa mini mol club	Nagano
79	790409	HY.M.C teamA	Tokyo
79	790509	EAST THUNDER	Tokyo
79	790609	T M NETWORK	Osaka
79	790709	Field Trip	Tokyo

GroupNo.	TeamID.	Team Name	Country
83	830113	HK Molkky - PLK1	Hong Kong
83	830213	Kajiya	Hokkaido
83	830313	Woo mol sankaku dan B	Tokyo
83	830413	Nomibo	Osaka
83	830513	MOMOASAGAO	Saitama
83	830613	KTMC	Iwate
83	830713	RUMOI GEK	Hokkaido

GroupNo.	TeamID.	Team Name	Country
87	870117	Les Claquettes Chaussettes	France
87	870217	CTS	Hokkaido
87	870317	Sfida M	Kanagawa
87	870417	Fukagawa WH_hips young stars	Hokkaido
87	870517	Enimwamorukkunkokai	Hokkaido
87	870617	Yokohama Inti Raymers	Tokyo
87	870717	Loch North	Osaka

GroupNo.	TeamID.	Team Name	Country
80	800110	Flugschneisenwerfer	Switzerland
80	800210	Mochari-ume	Osaka
80	800310	Katsushika Molkky Club	Tokyo
80	800410	DOIRYO STARS	Hokkaido
80	800510	YUKUMOLKKYY	Okayama
80	800610	SHOGE FRIENDS	Toyama
80	800710	Creepy Acorns	Tokyo

GroupNo.	TeamID.	Team Name	Country
84	840114	Game of Throws	India
84	840214	yamadamura	Osaka
84	840314	OodakaRoutoruzu	Aichi
84	840414	YOU.FO Club Tokyo	Tokyo
84	840514	KIZUKURI	Ibaraki
84	840614	Suginami MolkLove	Tokyo
84	840714	Takenoyu Bekkan A	Tokyo

GroupNo.	TeamID.	Team Name	Country
88	880118	HK Molkky - Avengers	Hong Kong
88	880218	KASHIWAUDON-KASHIWAMESHI	Fukuoka
88	880318	Arse Hikage	Chiba
88	880418	MolkaariSannomiya	Hyogo
88	880518	vocosnergel	Hokkaido
88	880618	hibiya molkky club	Tokyo
88	880718	mix juice	Hiroshima

GroupNo.	TeamID.	Team Name	Country
81	810111	HSM Molkky	France
81	810211	HOKKAIDO FIN KYO	Hokkaido
81	810311	SENDAI MOLKKY HAYASHI RICE	Osaka
81	810411	STARMOL	Tokyo
81	810511	NIKOYAMA	Kanagawa
81	810611	hot hokubi	Hokkaido
81	810711	Goofy fox	Hokkaido

GroupNo.	TeamID.	Team Name	Country
85	850115	Czech Happiness	Czech Republic
85	850215	mispo_AU	Aichi
85	850315	sun visor enthusiast group	Hokkaido
85	850415	team sika de sita	Tokyo
85	850515	KMJ	Hokkaido
85	850615	SAMURAI AMICUS	Kanagawa
85	850715	Tsukuba Skittles MYJAN	Chiba

GroupNo.	TeamID.	Team Name	Country
89	890119	HMS Baton Mouche	Finland
89	890219	Dokkyo PerD6M6	Saitama
89	890319	KUL 47ers	Tokyo
89	890419	L-THINKS	Saitama
89	890519	Molkky University of Technology	Niigata
89	890619	KAMAKURA 4-GENE	Kanagawa
89	890719	MOLGONZ HAKONE	Kanagawa

GroupNo.	TeamID.	Team Name	Country
82	820112	Travelling Molkky with Backwoods Tranq	Finland
82	820212	Team Kiitos	Chiba
82	820312	Yellow Hibiscus	Hokkaido
82	820412	Fuji Oilers	Hyogo
82	820512	ozora sports recreation club	Hokkaido
82	820612	Spring Dogs	Kanagawa
82	820712	Mix Nuts	Toyama

GroupNo.	TeamID.	Team Name	Country
86	860116	Osuko Joku	Finland
86	860216	Date torippirs	Hokkaido
86	860316	toveri	Aichi
86	860416	KINDAI WAKAYAMA	Osaka
86	860516	Akashi Molkky Club	Hyogo
86	860616	cogoce ace	Osaka
86	860716	HARAGURO4	Hokkaido

GroupNo.	TeamID.	Team Name	Country
90	900120	K-MOLKKY	South Korea
90	900220	NAHMO COISA	Niigata
90	900320	TEAM RYAN	Niigata
90	900420	Basilisk	Tokyo
90	900520	BUNMOL	Tokyo
90	900620	Lyra	Tokyo
90	900720	kuramol	Okayama

Group List

GroupNo.	TeamID.	Team Name	Country
91	910121	TERUMAERS	Chiba
91	910221	SANZUI	Tokyo
91	910321	YEBISU	Shiga
91	910421	Molcky Machida-KleinBleu	Tokyo
91	910521	KAWATA molcky club	Shizuoka
91	910621	NKNK-Veli	Shizuoka
91	910721	SHIMBASHI×OMOMUKI	Saitama

GroupNo.	TeamID.	Team Name	Country
95	950125	TEAM TAIJIRO	Hokkaido
95	950225	ZANGI STAR	Hokkaido
95	950325	ADPANDARS	Aichi
95	950425	KINDZMOLKKAARI	Tokyo
95	950525	One Team	Osaka
95	950625	milkyway	Aichi
95	950725	Hitoyoshi Peanuts	Kyoto

GroupNo.	TeamID.	Team Name	Country
92	920122	comodo	Osaka
92	920222	HiroShimane Dgumi	Shimane
92	920322	yips shimizu gumi	Tokyo
92	920422	YELLN4	Hokkaido
92	920522	Bee-Mo	Tokyo
92	920622	team HAPPY	Hokkaido
92	920722	OMAKASE order2	Kyoto

GroupNo.	TeamID.	Team Name	Country
96	960126	Toyama Brave Thunders	Tokyo
96	960226	HAKONIWA	Hokkaido
96	960326	Hercules Nagasaki	Nagasaki
96	960426	5Turn Spiders	Kanagawa
96	960526	UmiFuko100	Chiba
96	960626	SOKOSUKI	Hokkaido
96	960726	NANAE MOLKKY B	Hokkaido

GroupNo.	TeamID.	Team Name	Country
93	930123	NIPPA PETANCO	Kanagawa
93	930223	STeAK	Hyogo
93	930323	WAMoWAMo panic	Wakayama
93	930423	Team TAKOJIZO	Kanagawa
93	930523	Tricolore Nuggets	Tokyo
93	930623	Little BOSS	Ishikawa
93	930723	Hotenz	Tokyo

GroupNo.	TeamID.	Team Name	Country
94	940124	RAMOS	Hokkaido
94	940224	MK-Dragons	Kanagawa
94	940324	Intelligent Fool	Toyama
94	940424	otopuke moruchan's	Hokkaido
94	940524	Syoshinsya	Hokkaido
94	940624	jaja ohchu	Tokyo
94	940724	YAMAHANA INCALCIPE	Hokkaido

In addition to the rules set forth in the [Official Rule Book](#), the following rules will apply to this tournament.

- Definition of the term “throw”

- In principle, throwing by overhand throwing is not allowed in this tournament.

- Playing fields

- The size of playing fields is 5 m width and 11 m length in this tournament.
However, the field size will be expanded for the finals only.

- Referees

- In this tournament, a main referee and an assistant referee will be provided for Final and Friendly Tournament’s Final.
- The games except Final and Friendly Tournament’s Final are played without referees.
- The teams are responsible for the implementation of the rules.
- In case of disagreements, tournament headquarters staff will be called.

■About the game

- Please arrive on the court well before the start of the game.
- Please use the Molkky provided on each court.
Other Molkky sets/ throwing skittles are not permitted.
The use of anti-slip powder etc. is not permitted.
There are no restrictions on the use of gloves.
- All games must be played with four members.
Participating with fewer members is permissible; however, the team will be considered as having four members, including the present members and the missing members.
The missing member(s) will have their own throwing turns, which will be counted as a throwing error (0 points) each turn.
- If the player who is to throw the Molkky is not present within the 60 seconds designated as the throwing time, it will be recorded as "Absence of a player" (fault) and the penalty will be a missed throw.
- If this “ Absence of a player ” occurs three consecutive times, the team will be disqualified and will lose the set.
- The whistle will be blown five minutes before the end of each game.
(except for the Final, 3rd place Match, and the Friendly Tournament the Final)
For the game in progress when the whistle blows, the game will end as soon as the final throwing team completes their throw within the current turn.

■About the game (score sheet)

- The representative of the team should decide on the throwing order for each team, and write it on the score sheet.
- Only one scorecard and writing utensil will be provided per court.
If you need your personal team scoresheet, please bring your own.
- Please write the player's real name in the name column and signature column on the score sheet.
Nicknames are not allowed.
- You must write your team name and member names in alphabet when playing with non-Japanese players.

■About the game (Reporting match results)

- Once all games of the preliminary round are completed,
the team with branch number 02* in each group will bring the list of results to the scoring booth and enter the results.
 - * The 6-digit team ID consists of the group number (2 digits)
+ the branch number within the group (2 digits) + the court number of the first match (2 digits).

Please leave the score sheet at the court during the preliminary round.

- In the Final Tournament and Friendly Tournament,
please submit the Score sheet for each game to the tournament headquarters.

Day 1: 23 August 2024 (Friday)

... Opening Ceremony, Nation Match

@Showa Park

12:00PM-12:30PM Nation Match Opening Ceremony

12:30PM- 5:30PM Nation Match

5:30PM - 6:15PM Nation Match Awards Ceremony
World Championship Opening Ceremony

Day 2: 24 August 2024 (Saturday)

... World Championship (Preliminary Round)

@Showa Park

9:00AM-1:30PM Preliminary Round (Block A : Group1-22)

2:00PM-6:30PM Preliminary Round (Block B : Group23-44)

@NITHC

9:00AM-1:30PM Preliminary Round (Block C : Group45-70)

2:00PM-6:30PM Preliminary Round (Block D : Group71-96)

Day 3: 25 August 2024 (Sunday) ... World Championship (Finals Tournament)

@Showa Park

9:00AM-10:00AM	Round1 (3-team match, total points of 3 sets)
10:10AM-10:50AM	Round2 (2-team match, First to win 2 sets)
11:00AM-11:40AM	Round3 (2-team match, First to win 2 sets)

Counting and Breaks

12:50PM-1:30PM	Round4 (2-team match, First to win 2 sets)
1:40PM-2:20PM	Quarter Finals (2-team match, First to win 2 sets)
2:30PM-3:30PM	Semi-Finals (2-team match, First to win 3 sets)
3:40PM-5:40PM	Final (2-team match, First to win 4sets) 3rd Place Match (2-team match, First to win 3 sets)

5:50PM- Closing Ceremony

Day 3: 25 August 2024 (Sunday)

... TAIYO GROUP presents Friendly Tournament

@NITHC

10:00AM-10:50AM Round1 (4-team match, total points of 2 sets)

11:00AM-11:50AM Round2 (4-team match, total points of 2 sets)

12:00PM-12:50PM Quarter Finals (3-team match, total points of 2 sets)

12:50PM-1:40PM **Move to Showa Park**

@Showa Park

2:40PM-3:30PM Semi-Finals (2-team match, First to win 2 sets)

3:40PM-5:40PM Final (3-team match, total points of 3 sets)

■Preliminary Round

【Match Format】

- Each group will consist of 6-7 teams, with each team playing a round-robin format (5-6 games).
1 game consists of 2 sets.
- In the first set of each match, the team that wins a game of Rock-Paper-Scissors or a coin toss between team representatives will go first. In the second set, the order will be reversed.
- Each group will use 3 fields for the match.

@Showa Park

	24 August		Block A : Group1-22 Block B : Group23-44		
	開始時刻	終了時刻	内容	対戦チーム数	試合形式
BlockA	9:00	9:30	Round1	2-team match	2sets
	9:40	10:10	Round2	2-team match	2sets
	10:20	10:50	Round 3	2-team match	2sets
	11:00	11:30	Round4	2-team match	2sets
	11:40	12:10	Round5	2-team match	2sets
	12:20	12:50	Round6	2-team match	2sets
	1:00	1:30	Round7	2-team match	2sets
	1:30	2:00	Counting and Breaks		
BlockB	2:00	2:30	Round1	2-team match	2sets
	2:40	3:10	Round2	2-team match	2sets
	3:20	3:50	Round 3	2-team match	2sets
	4:00	4:30	Round4	2-team match	2sets
	4:40	5:10	Round5	2-team match	2sets
	5:20	5:50	Round6	2-team match	2sets
	6:00	6:30	Round7	2-team match	2sets

@N.I.T. Hakodate College

	24 August			Block C : Group45-70 Block D : Group71-96	
	開始時刻	終了時刻	内容	対戦チーム数	試合形式
BlockC	9:00	9:30	Round1	2-team match	2sets
	9:40	10:10	Round2	2-team match	2sets
	10:20	10:50	Round 3	2-team match	2sets
	11:00	11:30	Round4	2-team match	2sets
	11:40	12:10	Round5	2-team match	2sets
	12:20	12:50	Round6	2-team match	2sets
	1:00	1:30	Round7	2-team match	2sets
	1:30	2:00	Counting and Breaks		
BlockD	2:00	2:30	Round1	2-team match	2sets
	2:40	3:10	Round2	2-team match	2sets
	3:20	3:50	Round 3	2-team match	2sets
	4:00	4:30	Round4	2-team match	2sets
	4:40	5:10	Round5	2-team match	2sets
	5:20	5:50	Round6	2-team match	2sets
	6:00	6:30	Round7	2-team match	2sets

【How to decide the winner】

- A winner will be decided for each set.
In principle, each team's match record will be either "2 wins", "1 win and 1 loss", or "2 losses", except in cases where there is a "tie", as described below.
- When the set is not finished, the game win/loss will be decided by the small points of the set. If the small points are the same, this will be a tie.
- When the 1st set is not finished, the game win/loss will be decided by the small points of the set at the time of the whistle(including the last throw after the whistle).
The 2nd set will be both 0 points automatically for both teams.
Furthermore, the second set will be considered a tie with both teams having 0 points.

【How the rankings are determined】

- Ranking is determined by The ranking within each group will be decided by the number of the sets won.
(The team with the highest number of won sets have advantage)
- If the number of the sets won are same, the number of ties will decide the ranking.
(The team with the highest number of tied sets have advantage)
- If the number of wins and ties are the same, the total score will decide the ranking.
(The team with the highest number of total score have advantage)
- If the number of the sets won, tie, and the total score are all the same, the ranking will be decided by Molkk-out between the teams

- In the event that the number of wins, ties and total points are the same, the ranking will be decided by a Molkk-Out with each team having four throws.
This Molkk-Out will take place after the final game of each group.

- The top two teams from each group, a total of 192 teams, will advance to the Finals tournament on the third day, and the 3rd to 5th place teams from each group, a total of 288 teams, will advance to the first round of the Friendly Tournament.

■ Finals Tournament : Round1 (192teams→64teams)

【 Match Format 】

- Each group will have 3 teams and will play 3 sets.
- The team that wins a game of Rock-Paper-Scissors or a coin toss among the representatives will choose either a, b, or c.
- The throwing order for each set is:
1st set: a→b→c 2nd set: b→c→a 3rd set: c→a→b

【How the rankings are determined】

- The team with the highest total points for the 3 sets will be the winner.
- Ranking is determined by total points > number of sets won > Molkky-Out
- The top team from each group will advance to Round2.

■Finals Tournament : Round2 (64teams→32teams)

【 Match Format · How the rankings are determined】

- 2 teams will compete against each other.
- For the first set, the team that wins a game of Rock-Paper-Scissors or a coin toss between team representatives will go first.
For the second set, the order will be reversed.
- The team to win two sets will advance to Round3.
If a third set is played, the team with the higher small points for the 2 sets will go first. If the total points are the same, the team that wins a game of rock-paper-scissors or a coin toss will go first.

* If time's up in the middle of a set, determine the ranking based on the following priority.

number of sets won > total points > Molkky-Out

■Finals Tournament : Round3 (32teams→16teams)

【 Match Format ・ How the rankings are determined 】

- ・ The match format and ranking method will be the same as Round2, with 2 teams competing against each other, and the first team to win 2 sets will advance to Round4.

■Finals Tournament : Round4 (16teams→8teams)

【 Match Format ・ How the rankings are determined】

- ・ The match format and ranking method will be the same as Round2, with 2 teams competing against each other, and the first team to win 2 sets will advance to Quarter Finals .

■ Finals Tournament : Quarter Finals (8teams→4teams)

【 Match Format ・ How the rankings are determined】

- ・ 2 teams will compete against each other.
- ・ For the first set, the team that wins Rock-Paper-Scissors or a coin toss between the representatives will go first. For the second set, the order will be reversed.
- ・ The team to win 2 sets will advance to Semi-Finals.
- ・ For the third set, the team with the higher small points for the 2 sets will go first. If the total points are the same, the team that won Rock-Paper-Scissors, coin toss, etc. will go first.



■ Finals Tournament : Semi-Finals (4teams→2teams)

【 Match Format ・ How the rankings are determined 】

- ・ 2 teams will compete against each other.
- ・ For the first set, the team that wins Rock-Paper-Scissors or a coin toss between the representatives will go first.
For the second set, the order will be reversed, the third set will be the same as the first set, and the fourth set will be the same as the second set.
- ・ The team to win 3 sets will advance to Finals.
If a fifth set is played, the team with the higher total points for the four sets will go first.
If the total points are the same, the team that won Rock-Paper-Scissors or a coin toss will go first.

■ Finals Tournament : 3rd Place Match

【 Match Format ・ How the rankings are determined 】

- ・ The match format and ranking method will be the same as the Semi-Finals.

■Finals Tournament : The Final

【 Match Format ・ How to decide the winner 】

- ・ 2 teams will compete against each other.
- ・ For the first set, the team that wins Rock-Paper-Scissors or a coin toss between the representatives will go first.
For the second set, the order will be reversed, the third set will be the same as the first set, the fourth set will be the same as the second set, the fifth set will be the same as the first set, and the sixth set will be the same as the second set.
- ・ The team to win 4 sets will be the winner.
If a seventh set is played, the team with the higher total points for the six set will go first.
If the total points are the same, the team that won Rock-Paper-Scissors or a coin toss will go first.

TAIYO GROUP presents Friendly Tournament

■ Friendly Tournament : Round1 (288teams→72teams)

【 Match Format 】

- Each group will have 4 teams and will play 2 sets.
- The team that wins a game of Rock-Paper-Scissors or a coin toss among the representatives will choose either a, b, c, or d.
- The throwing order for each set is:
 - 1st set: a→b→c→d
 - 2nd set: d→c→b→a

【How the rankings are determined】

- Ranking is determined by
 - total points > number of sets won > Molkky-Out
- The top team from each group will advance to Friendly Tournament Round2.

■ Friendly Tournament : Round2 (72teams→18teams)

【 Match Format ・ How the rankings are determined 】

- ・ The format will be the same as the first round of the Friendly Tournament, with 4 teams competing, and the team with the most total points from each group will advance to the Friendly Tournament Quarter Finals.

■ Friendly Tournament : Quarter Finals (18teams→6teams)

【 Match Format 】

- Each group will have 3 teams and will play 2 sets.
- The team that wins a game of Rock-Paper-Scissors or a coin toss among the representatives will choose either a, b, or c.
- The throwing order for each set is: 1st set: a→b→c 2nd set: c→b→a

【How the rankings are determined】

- Ranking is determined by
total points > number of sets won > Molkky-Out
- The top team from each group will advance to the Friendly Tournament Semi-Finals.

■ Friendly Tournament : Semi-Finals (6teams→3teams)

【 Match Format · How the rankings are determined】

- 2 teams will compete against each other.
- For the first set, the team that wins a game of Rock-Paper-Scissors or a coin toss between team representatives will go first.
For the second set, the order will be reversed.
- The first team to win two sets will advance to the Friendly Tournament Final.
If a third set is played, the team with the higher total small points at of the 2 sets will go first. If the total points are the same, the team that wins a game of rock-paper-scissors or a coin toss will go first.

■ Friendly Tournament : The Final

【 Match Format 】

- Each group will have 3 teams and will play 3 sets.
- The team that wins a game of Rock-Paper-Scissors or a coin toss among the representatives will choose either a, b, or c.
- The throwing order for each set is: 1st set: $a \rightarrow b \rightarrow c$ 2nd set: $b \rightarrow c \rightarrow a$ 3rd set: $c \rightarrow a \rightarrow b$

【 How to decide the winner 】

- Ranking is determined by
total points > number of sets won > Molkky-Out
- The top-ranked team will be the winner.

IX.Match Table Preliminary Round



Showa Park
Block A
Group 01 ~ 04

Group 01					Group 02						
01	010101	The・Molkkass	05	010501	GURUMAN	01	020102	Suginami Enjoy Mollky	05	020502	Mollky Revengers
02	010201	HAPPY OUTSIDE BEAMS	06	010601	Uraholiday	02	020202	Osaka Nipponbashi Pon Birch	06	020602	Team Melo
03	010301	HANABISHIHOTEL	07	010701	SHELLYS	03	020302	HOKKAIDO HANSHIKAI	07	020702	imakane seinenkaigi
04	010401	HORIUCHI				04	020402	Throw Life			

24 Aug. (Sat.)	Field Number 01 A	Field Number 01 B	Field Number 01 C		Field Number 02 A	Field Number 02 B	Field Number 02 C	
9:00 ~ 9:30	01 vs 02	03 vs 04	05 vs 06		01 vs 02	03 vs 04	05 vs 06	
9:40 ~ 10:10	01 vs 03	02 vs 04	05 vs 07		01 vs 03	02 vs 04	05 vs 07	
10:20 ~ 10:50	01 vs 04	02 vs 03	06 vs 07		01 vs 04	02 vs 03	06 vs 07	
11:00 ~ 11:30	02 vs 07	03 vs 06	04 vs 05		02 vs 07	03 vs 06	04 vs 05	
11:40 ~ 12:10	01 vs 06	02 vs 05	03 vs 07		01 vs 06	02 vs 05	03 vs 07	
12:20 ~ 12:50	01 vs 05	02 vs 06	04 vs 07		01 vs 05	02 vs 06	04 vs 07	
13:00 ~ 13:30	01 vs 07	03 vs 05	04 vs 06		01 vs 07	03 vs 05	04 vs 06	

Group 03					Group 04						
01	030103	Mollky Lab SETOUCHI	05	030503	KAWANISHI	01	040104	MOLCCHA	05	040504	Woo mol sankaku dan C
02	030203	sakainetyougaku ob	06	030603	MOLKKY SETAGAYA plus Fab	02	040204	Good Mollking Guys	06	040604	Mollky du Soleil
03	030303	Lilac	07	030703	Witty	03	040304	TosuMölkkers T.D.M.Y.S	07	040704	KANAZAWA CULTURE AND SPORTS COMMISSION
04	030403	otobe mollky				04	040404	Möolulu TeamHAKODATE			

24 Aug. (Sat.)	Field Number 03 A	Field Number 03 B	Field Number 03 C		Field Number 04 A	Field Number 04 B	Field Number 04 C	
9:00 ~ 9:30	01 vs 02	03 vs 04	05 vs 06		01 vs 02	03 vs 04	05 vs 06	
9:40 ~ 10:10	01 vs 03	02 vs 04	05 vs 07		01 vs 03	02 vs 04	05 vs 07	
10:20 ~ 10:50	01 vs 04	02 vs 03	06 vs 07		01 vs 04	02 vs 03	06 vs 07	
11:00 ~ 11:30	02 vs 07	03 vs 06	04 vs 05		02 vs 07	03 vs 06	04 vs 05	
11:40 ~ 12:10	01 vs 06	02 vs 05	03 vs 07		01 vs 06	02 vs 05	03 vs 07	
12:20 ~ 12:50	01 vs 05	02 vs 06	04 vs 07		01 vs 05	02 vs 06	04 vs 07	
13:00 ~ 13:30	01 vs 07	03 vs 05	04 vs 06		01 vs 07	03 vs 05	04 vs 06	

IX.Match Table Preliminary Round



Showa Park

Block A

Group 05 ~ 08

Group 05						Group 06					
01	050105	RATEL D.TY.Y	05	050505	Team PONPONPON	01	060106	Sunshine	05	060506	PIG BEN
02	050205	PegachanTV	06	050605	TENG HUT	02	060206	YOSHIMOTO MOLKKY CLUB B	06	060606	SAKURAN333 mayonnaise
03	050305	MoruHaras	07	050705	ToroKaka	03	060306	Ishigaki molkky N	07	060706	MOLGEE
04	050405	Liver Sumo				04	060406	sorezore no omoi			

24 Aug. (Sat.)	Field Number 05 A	Field Number 05 B	Field Number 05 C		Field Number 06 A	Field Number 06 B	Field Number 06 C	
9:00 ~ 9:30	01 vs 02	03 vs 04	05 vs 06		01 vs 02	03 vs 04	05 vs 06	
9:40 ~ 10:10	01 vs 03	02 vs 04	05 vs 07		01 vs 03	02 vs 04	05 vs 07	
10:20 ~ 10:50	01 vs 04	02 vs 03	06 vs 07		01 vs 04	02 vs 03	06 vs 07	
11:00 ~ 11:30	02 vs 07	03 vs 06	04 vs 05		02 vs 07	03 vs 06	04 vs 05	
11:40 ~ 12:10	01 vs 06	02 vs 05	03 vs 07		01 vs 06	02 vs 05	03 vs 07	
12:20 ~ 12:50	01 vs 05	02 vs 06	04 vs 07		01 vs 05	02 vs 06	04 vs 07	
13:00 ~ 13:30	01 vs 07	03 vs 05	04 vs 06		01 vs 07	03 vs 05	04 vs 06	

Group 07						Group 08					
01	070107	MAKUHARI coLeTeT	05	070507	GenerationMix	01	080108	Crazy Turtles	05	080508	molkky SHOJI
02	070207	Sapporo Medical University Junior 2	06	070607	pura vida !	02	080208	The Season Fighter-TSF-	06	080608	LPM ~Let's Play Molkky ~
03	070307	TAKEDA GUN	07	070707	kskseven	03	080308	RENAISSANCE Molkky TEAM	07	080708	Victory OIKAWA
04	070407	BOYCOTT MONDAYS				04	080408	Defence Back Ohtaki			

24 Aug. (Sat.)	Field Number 07 A	Field Number 07 B	Field Number 07 C		Field Number 08 A	Field Number 08 B	Field Number 08 C	
9:00 ~ 9:30	01 vs 02	03 vs 04	05 vs 06		01 vs 02	03 vs 04	05 vs 06	
9:40 ~ 10:10	01 vs 03	02 vs 04	05 vs 07		01 vs 03	02 vs 04	05 vs 07	
10:20 ~ 10:50	01 vs 04	02 vs 03	06 vs 07		01 vs 04	02 vs 03	06 vs 07	
11:00 ~ 11:30	02 vs 07	03 vs 06	04 vs 05		02 vs 07	03 vs 06	04 vs 05	
11:40 ~ 12:10	01 vs 06	02 vs 05	03 vs 07		01 vs 06	02 vs 05	03 vs 07	
12:20 ~ 12:50	01 vs 05	02 vs 06	04 vs 07		01 vs 05	02 vs 06	04 vs 07	
13:00 ~ 13:30	01 vs 07	03 vs 05	04 vs 06		01 vs 07	03 vs 05	04 vs 06	

IX.Match Table Preliminary Round



Showa Park Block A Group 09 ~ 12	Group 09				Group 10							
	01	090109	Oyama Kosen Faculty Team	05	090509	BLACK ALIENS	01	100110	ponnnnnnnnnnnnnnn	05	100510	Togoshi Unbeatable Molky Club
	02	090209	KAKUTEI	06	090609	fanfare	02	100210	UMA	06	100610	SAKATA MKKing's
	03	090309	Pullkin molmol	07	090709	GOOD FRIENDS	03	100310	Hiroshima P smallkky	07	100710	tsuuhuutei
04	090409	sasse				04	100410	SAKURAN333 KUSUNOKI				

24 Aug. (Sat.)	Field Number 09 A	Field Number 09 B	Field Number 09 C		Field Number 10 A	Field Number 10 B	Field Number 10 C	
9:00 ~ 9:30	01 vs 02	03 vs 04	05 vs 06		01 vs 02	03 vs 04	05 vs 06	
9:40 ~ 10:10	01 vs 03	02 vs 04	05 vs 07		01 vs 03	02 vs 04	05 vs 07	
10:20 ~ 10:50	01 vs 04	02 vs 03	06 vs 07		01 vs 04	02 vs 03	06 vs 07	
11:00 ~ 11:30	02 vs 07	03 vs 06	04 vs 05		02 vs 07	03 vs 06	04 vs 05	
11:40 ~ 12:10	01 vs 06	02 vs 05	03 vs 07		01 vs 06	02 vs 05	03 vs 07	
12:20 ~ 12:50	01 vs 05	02 vs 06	04 vs 07		01 vs 05	02 vs 06	04 vs 07	
13:00 ~ 13:30	01 vs 07	03 vs 05	04 vs 06		01 vs 07	03 vs 05	04 vs 06	

Group 11				Group 12							
01	110111	Ebetsu Molky	05	110511	TEAM CREA	01	120112	TEAM albatross	05	120512	ISIKARI MEN
02	110211	NICHIGEKI	06	110611	SASK Condors	02	120212	Philip Denka	06	120612	fomitetsu
03	110311	Docon	07	110711	TETSUMEN	03	120312	NFT Molky Club	07	120712	Lantern
04	110411	FMIRUKA MOLKKY CLUB				04	120412	HAGAKURE			

24 Aug. (Sat.)	Field Number 11 A	Field Number 11 B	Field Number 11 C		Field Number 12 A	Field Number 12 B	Field Number 12 C	
9:00 ~ 9:30	01 vs 02	03 vs 04	05 vs 06		01 vs 02	03 vs 04	05 vs 06	
9:40 ~ 10:10	01 vs 03	02 vs 04	05 vs 07		01 vs 03	02 vs 04	05 vs 07	
10:20 ~ 10:50	01 vs 04	02 vs 03	06 vs 07		01 vs 04	02 vs 03	06 vs 07	
11:00 ~ 11:30	02 vs 07	03 vs 06	04 vs 05		02 vs 07	03 vs 06	04 vs 05	
11:40 ~ 12:10	01 vs 06	02 vs 05	03 vs 07		01 vs 06	02 vs 05	03 vs 07	
12:20 ~ 12:50	01 vs 05	02 vs 06	04 vs 07		01 vs 05	02 vs 06	04 vs 07	
13:00 ~ 13:30	01 vs 07	03 vs 05	04 vs 06		01 vs 07	03 vs 05	04 vs 06	

IX.Match Table Preliminary Round



Showa Park Block A Group 13 ~ 16		Group 13				Group 14					
01	130113	JaiLampi on Friday	05	130513	VistAA	01	140114	Suginami Molkky Club "Nori-Nori-2"	05	140514	NINA
02	130213	HY.M.C teamC	06	130613	Kasaibashi Sauna Club	02	140214	Sapporo Marlins	06	140614	TEAM PINE-AME
03	130313	team light hill	07	130713	SFAT ISEHARA SC	03	140314	muko2	07	140714	Yoshimol
04	130413	OLD SMASH				04	140414	ROPPONGI MOLKKY CLUB			

24 Aug. (Sat.)	Field Number 13 A	Field Number 13 B	Field Number 13 C		Field Number 14 A	Field Number 14 B	Field Number 14 C	
9:00 ~ 9:30	01 vs 02	03 vs 04	05 vs 06		01 vs 02	03 vs 04	05 vs 06	
9:40 ~ 10:10	01 vs 03	02 vs 04	05 vs 07		01 vs 03	02 vs 04	05 vs 07	
10:20 ~ 10:50	01 vs 04	02 vs 03	06 vs 07		01 vs 04	02 vs 03	06 vs 07	
11:00 ~ 11:30	02 vs 07	03 vs 06	04 vs 05		02 vs 07	03 vs 06	04 vs 05	
11:40 ~ 12:10	01 vs 06	02 vs 05	03 vs 07		01 vs 06	02 vs 05	03 vs 07	
12:20 ~ 12:50	01 vs 05	02 vs 06	04 vs 07		01 vs 05	02 vs 06	04 vs 07	
13:00 ~ 13:30	01 vs 07	03 vs 05	04 vs 06		01 vs 07	03 vs 05	04 vs 06	

Group 15				Group 16							
01	150115	SIMSONS	05	150515	MMC	01	160116	coco-hari molkky club	05	160516	YAMAHANA TASOGARE
02	150215	Team J with D	06	150615	SAKURAN333SUKIYAKI	02	160216	PASSIONE	06	160616	KTMC 2nd
03	150315	mommy	07	150715	RATEL R.T.Y.Y.Y	03	160316	KANPAIDOMEI - MAIKY	07	160716	Fukutsu MC
04	150415	MolkkY Knight				04	160416	HONOBONO			

24 Aug. (Sat.)	Field Number 15 A	Field Number 15 B	Field Number 15 C		Field Number 16 A	Field Number 16 B	Field Number 16 C	
9:00 ~ 9:30	01 vs 02	03 vs 04	05 vs 06		01 vs 02	03 vs 04	05 vs 06	
9:40 ~ 10:10	01 vs 03	02 vs 04	05 vs 07		01 vs 03	02 vs 04	05 vs 07	
10:20 ~ 10:50	01 vs 04	02 vs 03	06 vs 07		01 vs 04	02 vs 03	06 vs 07	
11:00 ~ 11:30	02 vs 07	03 vs 06	04 vs 05		02 vs 07	03 vs 06	04 vs 05	
11:40 ~ 12:10	01 vs 06	02 vs 05	03 vs 07		01 vs 06	02 vs 05	03 vs 07	
12:20 ~ 12:50	01 vs 05	02 vs 06	04 vs 07		01 vs 05	02 vs 06	04 vs 07	
13:00 ~ 13:30	01 vs 07	03 vs 05	04 vs 06		01 vs 07	03 vs 05	04 vs 06	

IX.Match Table Preliminary Round



Showa Park
Block A
Group 17 ~ 20

Group 17						Group 18					
01	170117	Sendai Mollky Carry	05	170517	Skytms	01	180118	Niigata Mollky Club	05	180518	Tokaido Ensens
02	170217	cokes	06	170617	Praise	02	180218	TEAM MUROCK	06	180618	Heiseido Pharmacy Mollky Club
03	170317	FINDING FUNDS	07	170717	MONGOOOOOSE CLAW	03	180318	LIGHT DE FIGHT	07	180718	OHNO DREAM
04	170417	T- mollkyTeamB				04	180418	BAIKA Classic			

24 Aug. (Sat.)	Field Number 17 A	Field Number 17 B	Field Number 17 C		Field Number 18 A	Field Number 18 B	Field Number 18 C	
9:00 ~ 9:30	01 vs 02	03 vs 04	05 vs 06		01 vs 02	03 vs 04	05 vs 06	
9:40 ~ 10:10	01 vs 03	02 vs 04	05 vs 07		01 vs 03	02 vs 04	05 vs 07	
10:20 ~ 10:50	01 vs 04	02 vs 03	06 vs 07		01 vs 04	02 vs 03	06 vs 07	
11:00 ~ 11:30	02 vs 07	03 vs 06	04 vs 05		02 vs 07	03 vs 06	04 vs 05	
11:40 ~ 12:10	01 vs 06	02 vs 05	03 vs 07		01 vs 06	02 vs 05	03 vs 07	
12:20 ~ 12:50	01 vs 05	02 vs 06	04 vs 07		01 vs 05	02 vs 06	04 vs 07	
13:00 ~ 13:30	01 vs 07	03 vs 05	04 vs 06		01 vs 07	03 vs 05	04 vs 06	

Group 19						Group 20					
01	190119	Takenoyu-Bekkan B	05	190519	puikko	01	200120	Hayashi-DanzoH bReaKers@Mollky	05	200520	co3co SP
02	190219	mollky kurisawa	06	190619	tsuruga tanoshimollkynokai	02	200220	chee	06	200620	yoshimoto mollkkey club a
03	190319	masunosuke	07	190719	itochu fashion system	03	200320	Chita mollky club	07	200720	IWAMOL
04	190419	team Hakodate Shimbun				04	200420	Gosalo Boys			

24 Aug. (Sat.)	Field Number 19 A	Field Number 19 B	Field Number 19 C		Field Number 20 A	Field Number 20 B	Field Number 20 C	
9:00 ~ 9:30	01 vs 02	03 vs 04	05 vs 06		01 vs 02	03 vs 04	05 vs 06	
9:40 ~ 10:10	01 vs 03	02 vs 04	05 vs 07		01 vs 03	02 vs 04	05 vs 07	
10:20 ~ 10:50	01 vs 04	02 vs 03	06 vs 07		01 vs 04	02 vs 03	06 vs 07	
11:00 ~ 11:30	02 vs 07	03 vs 06	04 vs 05		02 vs 07	03 vs 06	04 vs 05	
11:40 ~ 12:10	01 vs 06	02 vs 05	03 vs 07		01 vs 06	02 vs 05	03 vs 07	
12:20 ~ 12:50	01 vs 05	02 vs 06	04 vs 07		01 vs 05	02 vs 06	04 vs 07	
13:00 ~ 13:30	01 vs 07	03 vs 05	04 vs 06		01 vs 07	03 vs 05	04 vs 06	

IX.Match Table Preliminary Round



Showa Park
Block A
Group 21 ~ 22

Group 21				Group 22							
01	210121	Kamakura ZEN	05	210521	SUMIRE'S SMILE	01	220122	MoL Solare	05	220522	Team Finland
02	210221	BOBO lu	06	210621	SAPPORO KANKU	02	220222	SAKURAN333ODANGO	06	220622	HOKUTOSEI
03	210321	TKA	07	210721	POWER MOLKKY CLUB	03	220322	Sapporo Medical University Junior	07	220722	YOTSUYAKAI
04	210421	Team KIBA-KOEN				04	220422	MoritsAshikoshi			

24 Aug. (Sat.)	Field Number 21 A	Field Number 21 B	Field Number 21 C		Field Number 22 A	Field Number 22 B	Field Number 22 C	
9:00 ~ 9:30	01 vs 02	03 vs 04	05 vs 06		01 vs 02	03 vs 04	05 vs 06	
9:40 ~ 10:10	01 vs 03	02 vs 04	05 vs 07		01 vs 03	02 vs 04	05 vs 07	
10:20 ~ 10:50	01 vs 04	02 vs 03	06 vs 07		01 vs 04	02 vs 03	06 vs 07	
11:00 ~ 11:30	02 vs 07	03 vs 06	04 vs 05		02 vs 07	03 vs 06	04 vs 05	
11:40 ~ 12:10	01 vs 06	02 vs 05	03 vs 07		01 vs 06	02 vs 05	03 vs 07	
12:20 ~ 12:50	01 vs 05	02 vs 06	04 vs 07		01 vs 05	02 vs 06	04 vs 07	
13:00 ~ 13:30	01 vs 07	03 vs 05	04 vs 06		01 vs 07	03 vs 05	04 vs 06	

IX.Match Table Preliminary Round



Showa Park
Block B
Group 23 ~ 26

Group 23				Group 24							
01	230101	TEAM HTB	05	230501	team APOC plus	01	240102	Miromesnil Croix de Loraine	05	240502	OMAKASE order1
02	230201	Molkky Kumobayashi from TAIWAN	06	230601	bone heas	02	240202	Ukiha Board Game Club	06	240602	ITTEKOI AKASAKA
03	230301	molocker	07	230701	KOBE BLACKSWAN	03	240302	NY	07	240702	A-tie
04	230401	Team WORTH AGENCY				04	240402	SAKATA			

24 Aug. (Sat.)	Field Number 01 A	Field Number 01 B	Field Number 01 C		Field Number 02 A	Field Number 02 B	Field Number 02 C	
14:00 ~ 14:30	01 vs 02	03 vs 04	05 vs 06		01 vs 02	03 vs 04	05 vs 06	
14:40 ~ 15:10	01 vs 03	02 vs 04	05 vs 07		01 vs 03	02 vs 04	05 vs 07	
15:20 ~ 15:50	01 vs 04	02 vs 03	06 vs 07		01 vs 04	02 vs 03	06 vs 07	
16:00 ~ 16:30	02 vs 07	03 vs 06	04 vs 05		02 vs 07	03 vs 06	04 vs 05	
16:40 ~ 17:10	01 vs 06	02 vs 05	03 vs 07		01 vs 06	02 vs 05	03 vs 07	
17:20 ~ 17:50	01 vs 05	02 vs 06	04 vs 07		01 vs 05	02 vs 06	04 vs 07	
18:00 ~ 18:30	01 vs 07	03 vs 05	04 vs 06		01 vs 07	03 vs 05	04 vs 06	

Group 25				Group 26							
01	250103	Maestro	05	250503	KaneHashi	01	260104	Dwunastka MM	05	260504	TAKENOKO Festival
02	250203	pork beans	06	250603	MoLLaB	02	260204	Bar_PIGEON	06	260604	ichigoya
03	250303	TEAM TSUKA33	07	250703	Kawai gundan	03	260304	gojomol	07	260704	Viaton Molkky Club
04	250403	MOMOQ				04	260404	IMCA			

24 Aug. (Sat.)	Field Number 03 A	Field Number 03 B	Field Number 03 C		Field Number 04 A	Field Number 04 B	Field Number 04 C	
14:00 ~ 14:30	01 vs 02	03 vs 04	05 vs 06		01 vs 02	03 vs 04	05 vs 06	
14:40 ~ 15:10	01 vs 03	02 vs 04	05 vs 07		01 vs 03	02 vs 04	05 vs 07	
15:20 ~ 15:50	01 vs 04	02 vs 03	06 vs 07		01 vs 04	02 vs 03	06 vs 07	
16:00 ~ 16:30	02 vs 07	03 vs 06	04 vs 05		02 vs 07	03 vs 06	04 vs 05	
16:40 ~ 17:10	01 vs 06	02 vs 05	03 vs 07		01 vs 06	02 vs 05	03 vs 07	
17:20 ~ 17:50	01 vs 05	02 vs 06	04 vs 07		01 vs 05	02 vs 06	04 vs 07	
18:00 ~ 18:30	01 vs 07	03 vs 05	04 vs 06		01 vs 07	03 vs 05	04 vs 06	

IX.Match Table Preliminary Round



Showa Park
Block B
Group 27 ~ 30

Group 27				Group 28							
01	270105	Konna&Koukku	05	270505	MARCH	01	280106	HK Molkky - Breeze	05	280506	Hiroshi
02	270205	MOLKKY EDOGAWA	06	270605	Molkky Wazagen	02	280206	PoMa Glanz	06	280606	abagakari
03	270305	We Love Moomin	07	270705	Black Panthers	03	280306	DeMB	07	280706	yomyom
04	270405	PINK TRAIN WORLD				04	280406	Shinagawa Equities			

24 Aug. (Sat.)	Field Number 05 A	Field Number 05 B	Field Number 05 C		Field Number 06 A	Field Number 06 B	Field Number 06 C	
14:00 ~ 14:30	01 vs 02	03 vs 04	05 vs 06		01 vs 02	03 vs 04	05 vs 06	
14:40 ~ 15:10	01 vs 03	02 vs 04	05 vs 07		01 vs 03	02 vs 04	05 vs 07	
15:20 ~ 15:50	01 vs 04	02 vs 03	06 vs 07		01 vs 04	02 vs 03	06 vs 07	
16:00 ~ 16:30	02 vs 07	03 vs 06	04 vs 05		02 vs 07	03 vs 06	04 vs 05	
16:40 ~ 17:10	01 vs 06	02 vs 05	03 vs 07		01 vs 06	02 vs 05	03 vs 07	
17:20 ~ 17:50	01 vs 05	02 vs 06	04 vs 07		01 vs 05	02 vs 06	04 vs 07	
18:00 ~ 18:30	01 vs 07	03 vs 05	04 vs 06		01 vs 07	03 vs 05	04 vs 06	

Group 29				Group 30							
01	290107	Oh la la	05	290507	mollbura !	01	300108	Finskaroo's Gold	05	300508	YACHIDAMO
02	290207	Aurora	06	290607	NYAGERU	02	300208	Molkky Hiroshima	06	300608	iGo Gundan
03	290307	aamokk	07	290707	HAKUYO23	03	300308	WHITE HILLS	07	300708	FUURINKAZAN
04	290407	Eight days off a week				04	300408	EMUCHIRU			

24 Aug. (Sat.)	Field Number 07 A	Field Number 07 B	Field Number 07 C		Field Number 08 A	Field Number 08 B	Field Number 08 C	
14:00 ~ 14:30	01 vs 02	03 vs 04	05 vs 06		01 vs 02	03 vs 04	05 vs 06	
14:40 ~ 15:10	01 vs 03	02 vs 04	05 vs 07		01 vs 03	02 vs 04	05 vs 07	
15:20 ~ 15:50	01 vs 04	02 vs 03	06 vs 07		01 vs 04	02 vs 03	06 vs 07	
16:00 ~ 16:30	02 vs 07	03 vs 06	04 vs 05		02 vs 07	03 vs 06	04 vs 05	
16:40 ~ 17:10	01 vs 06	02 vs 05	03 vs 07		01 vs 06	02 vs 05	03 vs 07	
17:20 ~ 17:50	01 vs 05	02 vs 06	04 vs 07		01 vs 05	02 vs 06	04 vs 07	
18:00 ~ 18:30	01 vs 07	03 vs 05	04 vs 06		01 vs 07	03 vs 05	04 vs 06	

IX.Match Table Preliminary Round



Showa Park
Block B
Group 31 ~ 34

Group 31				Group 32							
01	310109	Rosengarten Rats Berlin 1	05	310509	red gorilla the world	01	320110	TEAM ICHIOSHI	05	320510	Tokyo East Wind
02	310209	Fujita Geshuku OG	06	310609	TEAM KOYOU	02	320210	Kymiläiset	06	320610	Kiyota DE Molkky
03	310309	mo-chari matsu	07	310709	TEAM GANIGARA	03	320310	CONSASAPO KURI	07	320710	YURU MOLKKY
04	310409	2kai-z				04	320410	AshiMol			

24 Aug. (Sat.)	Field Number 09 A	Field Number 09 B	Field Number 09 C		Field Number 10 A	Field Number 10 B	Field Number 10 C	
14:00 ~ 14:30	01 vs 02	03 vs 04	05 vs 06		01 vs 02	03 vs 04	05 vs 06	
14:40 ~ 15:10	01 vs 03	02 vs 04	05 vs 07		01 vs 03	02 vs 04	05 vs 07	
15:20 ~ 15:50	01 vs 04	02 vs 03	06 vs 07		01 vs 04	02 vs 03	06 vs 07	
16:00 ~ 16:30	02 vs 07	03 vs 06	04 vs 05		02 vs 07	03 vs 06	04 vs 05	
16:40 ~ 17:10	01 vs 06	02 vs 05	03 vs 07		01 vs 06	02 vs 05	03 vs 07	
17:20 ~ 17:50	01 vs 05	02 vs 06	04 vs 07		01 vs 05	02 vs 06	04 vs 07	
18:00 ~ 18:30	01 vs 07	03 vs 05	04 vs 06		01 vs 07	03 vs 05	04 vs 06	

Group 33				Group 34							
01	330111	Komitywa	05	330511	KIMI TO MOLKKY	01	340112	Team Lokki	05	340512	J's
02	330211	sakurambo	06	330611	coelacanth	02	340212	KAWANISHI V	06	340612	FURU
03	330311	Kitagou Molkky + löwkey	07	330711	SUNSPORTS	03	340312	Zn brothers	07	340712	PRO-WRESTLING EZIGEN
04	330411	SK.Miracle				04	340412	Shimamoto MC			

24 Aug. (Sat.)	Field Number 11 A	Field Number 11 B	Field Number 11 C		Field Number 12 A	Field Number 12 B	Field Number 12 C	
14:00 ~ 14:30	01 vs 02	03 vs 04	05 vs 06		01 vs 02	03 vs 04	05 vs 06	
14:40 ~ 15:10	01 vs 03	02 vs 04	05 vs 07		01 vs 03	02 vs 04	05 vs 07	
15:20 ~ 15:50	01 vs 04	02 vs 03	06 vs 07		01 vs 04	02 vs 03	06 vs 07	
16:00 ~ 16:30	02 vs 07	03 vs 06	04 vs 05		02 vs 07	03 vs 06	04 vs 05	
16:40 ~ 17:10	01 vs 06	02 vs 05	03 vs 07		01 vs 06	02 vs 05	03 vs 07	
17:20 ~ 17:50	01 vs 05	02 vs 06	04 vs 07		01 vs 05	02 vs 06	04 vs 07	
18:00 ~ 18:30	01 vs 07	03 vs 05	04 vs 06		01 vs 07	03 vs 05	04 vs 06	

IX.Match Table Preliminary Round



Showa Park
Block B
Group 35 ~ 38

Group 35				Group 36							
01	350113	Rosengarten Rats Berlin 2	05	350513	team bokoi	01	360114	Les Pagny-Mauges	05	360514	Woo mol sankaku dan A
02	350213	HOKUDAI RETAR KAMUYCEP	06	350613	Mukogawa molkky Mameshi-ba	02	360214	PuiPuiMolkky	06	360614	DARWINIANSEA
03	350313	SHINSHU UNIVERSITY	07	350713	TASHINAMI	03	360314	Ankka_aigamo	07	360714	VIVID
04	350413	SAKAMOTO'S 233				04	360414	Sapmed3			

24 Aug. (Sat.)	Field Number 13 A	Field Number 13 B	Field Number 13 C		Field Number 14 A	Field Number 14 B	Field Number 14 C	
14:00 ~ 14:30	01 vs 02	03 vs 04	05 vs 06		01 vs 02	03 vs 04	05 vs 06	
14:40 ~ 15:10	01 vs 03	02 vs 04	05 vs 07		01 vs 03	02 vs 04	05 vs 07	
15:20 ~ 15:50	01 vs 04	02 vs 03	06 vs 07		01 vs 04	02 vs 03	06 vs 07	
16:00 ~ 16:30	02 vs 07	03 vs 06	04 vs 05		02 vs 07	03 vs 06	04 vs 05	
16:40 ~ 17:10	01 vs 06	02 vs 05	03 vs 07		01 vs 06	02 vs 05	03 vs 07	
17:20 ~ 17:50	01 vs 05	02 vs 06	04 vs 07		01 vs 05	02 vs 06	04 vs 07	
18:00 ~ 18:30	01 vs 07	03 vs 05	04 vs 06		01 vs 07	03 vs 05	04 vs 06	

Group 37				Group 38							
01	370115	Sydney Sails	05	370515	TIIMI KARHU	01	380116	The French Compass	05	380516	TTSK
02	370215	HAYAMA	06	370615	MOLU YAMADA	02	380216	MASE Gumi	06	380616	FUN sports club
03	370315	DUNMOK	07	370715	Toku Cruise	03	380316	IMABARWEST HIGHSCHOOL MOLKKE	07	380716	Kyudai gradaters
04	370415	KOBAMOL FAMILY				04	380416	Marshal			

24 Aug. (Sat.)	Field Number 15 A	Field Number 15 B	Field Number 15 C		Field Number 16 A	Field Number 16 B	Field Number 16 C	
14:00 ~ 14:30	01 vs 02	03 vs 04	05 vs 06		01 vs 02	03 vs 04	05 vs 06	
14:40 ~ 15:10	01 vs 03	02 vs 04	05 vs 07		01 vs 03	02 vs 04	05 vs 07	
15:20 ~ 15:50	01 vs 04	02 vs 03	06 vs 07		01 vs 04	02 vs 03	06 vs 07	
16:00 ~ 16:30	02 vs 07	03 vs 06	04 vs 05		02 vs 07	03 vs 06	04 vs 05	
16:40 ~ 17:10	01 vs 06	02 vs 05	03 vs 07		01 vs 06	02 vs 05	03 vs 07	
17:20 ~ 17:50	01 vs 05	02 vs 06	04 vs 07		01 vs 05	02 vs 06	04 vs 07	
18:00 ~ 18:30	01 vs 07	03 vs 05	04 vs 06		01 vs 07	03 vs 05	04 vs 06	

IX.Match Table Preliminary Round



Showa Park
Block B
Group 39 ~ 42

Group 39				Group 40							
01	390117	Sisu Team	05	390517	Daimonkanpaidoumei	01	400118	Finskarroos Green	05	400518	DOIRYOU ver.World
02	390217	Asia University Staff Molkky Club	06	390617	neighborhood-FIN	02	400218	Team Ojisan	06	400618	molkky46
03	390317	Mossaly Molkky	07	390717	Ranta Loch North	03	400318	Molkky Ishigakijima Z	07	400718	JP1 KING
04	390417	PRINCE OF MOLKKY				04	400418	Chii Mol			

24 Aug. (Sat.)	Field Number 17 A	Field Number 17 B	Field Number 17 C		Field Number 18 A	Field Number 18 B	Field Number 18 C	
14:00 ~ 14:30	01 vs 02	03 vs 04	05 vs 06		01 vs 02	03 vs 04	05 vs 06	
14:40 ~ 15:10	01 vs 03	02 vs 04	05 vs 07		01 vs 03	02 vs 04	05 vs 07	
15:20 ~ 15:50	01 vs 04	02 vs 03	06 vs 07		01 vs 04	02 vs 03	06 vs 07	
16:00 ~ 16:30	02 vs 07	03 vs 06	04 vs 05		02 vs 07	03 vs 06	04 vs 05	
16:40 ~ 17:10	01 vs 06	02 vs 05	03 vs 07		01 vs 06	02 vs 05	03 vs 07	
17:20 ~ 17:50	01 vs 05	02 vs 06	04 vs 07		01 vs 05	02 vs 06	04 vs 07	
18:00 ~ 18:30	01 vs 07	03 vs 05	04 vs 06		01 vs 07	03 vs 05	04 vs 06	

Group 41				Group 42							
01	410119	Nifty fifty	05	410519	team opanti LOVE	01	420120	HK Molkky - End Game	05	420520	mensore kitami
02	410219	Utsunomiya Molx	06	410619	Team YUZU	02	420220	35PT-C	06	420620	Izumi steel works molkky club
03	410319	Aomori Joyful Molkky PaB	07	410719	T-ROLLERS	03	420320	Red Porks	07	420720	KEI&HARU&
04	410419	komlook				04	420420	MOLTIS TOKYO			

24 Aug. (Sat.)	Field Number 19 A	Field Number 19 B	Field Number 19 C		Field Number 20 A	Field Number 20 B	Field Number 20 C	
14:00 ~ 14:30	01 vs 02	03 vs 04	05 vs 06		01 vs 02	03 vs 04	05 vs 06	
14:40 ~ 15:10	01 vs 03	02 vs 04	05 vs 07		01 vs 03	02 vs 04	05 vs 07	
15:20 ~ 15:50	01 vs 04	02 vs 03	06 vs 07		01 vs 04	02 vs 03	06 vs 07	
16:00 ~ 16:30	02 vs 07	03 vs 06	04 vs 05		02 vs 07	03 vs 06	04 vs 05	
16:40 ~ 17:10	01 vs 06	02 vs 05	03 vs 07		01 vs 06	02 vs 05	03 vs 07	
17:20 ~ 17:50	01 vs 05	02 vs 06	04 vs 07		01 vs 05	02 vs 06	04 vs 07	
18:00 ~ 18:30	01 vs 07	03 vs 05	04 vs 06		01 vs 07	03 vs 05	04 vs 06	

IX.Match Table Preliminary Round



Showa Park
Block B
Group 43 ~ 44

Group 43					Group 44						
01	430121	KING OF MOLKKY	05	430521	Team Abegangu	01	440122	IM	05	440522	KAWANISHI PASSION 50
02	430221	PLANET FINNSKA	06	430621	mollog	02	440222	LOBE STAR	06	440622	Sendai Jyo
03	430321	haonijuumaru	07	430721	T-Mölkku	03	440322	MK drinkers	07	440722	TGS
04	430421	KIT Molkky Team				04	440422	Owesome Cake			

24 Aug. (Sat.)	Field Number 21 A	Field Number 21 B	Field Number 21 C		Field Number 22 A	Field Number 22 B	Field Number 22 C	
14:00 ~ 14:30	01 vs 02	03 vs 04	05 vs 06		01 vs 02	03 vs 04	05 vs 06	
14:40 ~ 15:10	01 vs 03	02 vs 04	05 vs 07		01 vs 03	02 vs 04	05 vs 07	
15:20 ~ 15:50	01 vs 04	02 vs 03	06 vs 07		01 vs 04	02 vs 03	06 vs 07	
16:00 ~ 16:30	02 vs 07	03 vs 06	04 vs 05		02 vs 07	03 vs 06	04 vs 05	
16:40 ~ 17:10	01 vs 06	02 vs 05	03 vs 07		01 vs 06	02 vs 05	03 vs 07	
17:20 ~ 17:50	01 vs 05	02 vs 06	04 vs 07		01 vs 05	02 vs 06	04 vs 07	
18:00 ~ 18:30	01 vs 07	03 vs 05	04 vs 06		01 vs 07	03 vs 05	04 vs 06	

IX.Match Table Preliminary Round



NIT College
Block C
Group 45 ~ 48

Group 45				Group 46							
01	450101	Ikejiries	05	450501	AZUMI GATTARO	01	460102	Cinderella express	05	460502	SEED TOKACHI & CRAB eating CLUB
02	450201	Nagaoka molkky club	06	450601	SHINTOKU ONEALL+plus	02	460202	KIMURA FAMILY	06	460602	Team-MUKAIKAZE
03	450301	cogoce Bee	07	450701	Super gambrers	03	460302	MOUMOU EXSTASIES	07	460702	team dash
04	450401	LAB MOLKKY				04	460402	Kamakura BACCHUS			

24 Aug. (Sat.)	Field Number 01A	Field Number 01 B	Field Number 01 C		Field Number 02 A	Field Number 02 B	Field Number 02 C	
9:00 ~ 9:30	01 vs 02	03 vs 04	05 vs 06		01 vs 02	03 vs 04	05 vs 06	
9:40 ~ 10:10	01 vs 03	02 vs 04	05 vs 07		01 vs 03	02 vs 04	05 vs 07	
10:20 ~ 10:50	01 vs 04	02 vs 03	06 vs 07		01 vs 04	02 vs 03	06 vs 07	
11:00 ~ 11:30	02 vs 07	03 vs 06	04 vs 05		02 vs 07	03 vs 06	04 vs 05	
11:40 ~ 12:10	01 vs 06	02 vs 05	03 vs 07		01 vs 06	02 vs 05	03 vs 07	
12:20 ~ 12:50	01 vs 05	02 vs 06	04 vs 07		01 vs 05	02 vs 06	04 vs 07	
13:00 ~ 13:30	01 vs 07	03 vs 05	04 vs 06		01 vs 07	03 vs 05	04 vs 06	

Group 47				Group 48							
01	470103	Keio Sports Press 42nd	05	470503	TOTTORI SHIHANS	01	480104	team saikyo	05	480504	warebow
02	470203	Orca	06	470603	PEPAN'S	02	480204	RAKKYO powered by NTT Com	06	480604	GAMAGOORI MOLKKERS
03	470303	persimmonz	07	470703	Hakodate Marukatsu Suisan	03	480304	M.M molkkers	07	480704	Poulet frit
04	470403	OKUSHIRI				04	480404	Layered			

24 Aug. (Sat.)	Field Number 03 A	Field Number 03 B	Field Number 03 C		Field Number 04 A	Field Number 04 B	Field Number 04 C	
9:00 ~ 9:30	01 vs 02	03 vs 04	05 vs 06		01 vs 02	03 vs 04	05 vs 06	
9:40 ~ 10:10	01 vs 03	02 vs 04	05 vs 07		01 vs 03	02 vs 04	05 vs 07	
10:20 ~ 10:50	01 vs 04	02 vs 03	06 vs 07		01 vs 04	02 vs 03	06 vs 07	
11:00 ~ 11:30	02 vs 07	03 vs 06	04 vs 05		02 vs 07	03 vs 06	04 vs 05	
11:40 ~ 12:10	01 vs 06	02 vs 05	03 vs 07		01 vs 06	02 vs 05	03 vs 07	
12:20 ~ 12:50	01 vs 05	02 vs 06	04 vs 07		01 vs 05	02 vs 06	04 vs 07	
13:00 ~ 13:30	01 vs 07	03 vs 05	04 vs 06		01 vs 07	03 vs 05	04 vs 06	

IX.Match Table Preliminary Round



NIT College
Block C
Group 49 ~ 52

Group 49				Group 50							
01	490105	NO RAMEN , NO LIFE	05	490505	blue note	01	500106	KAMAKURAPPY	05	500506	MORUKURU
02	490205	OHBA MOLCAR'S	06	490605	yabukara stick	02	500206	Team Hakoppy	06	500606	Yamagata Tong Tong
03	490305	The Bee's Knees	07	490705	NEXT01	03	500306	Toshikan Bomber's	07	500706	Fuchu-mol 38
04	490405	Ushi to Hato				04	500406	Liberal Molkkyers			

24 Aug. (Sat.)	Field Number 05 A	Field Number 05 B	Field Number 05 C		Field Number 06 A	Field Number 06 B	Field Number 06 C	
9:00 ~ 9:30	01 vs 02	03 vs 04	05 vs 06		01 vs 02	03 vs 04	05 vs 06	
9:40 ~ 10:10	01 vs 03	02 vs 04	05 vs 07		01 vs 03	02 vs 04	05 vs 07	
10:20 ~ 10:50	01 vs 04	02 vs 03	06 vs 07		01 vs 04	02 vs 03	06 vs 07	
11:00 ~ 11:30	02 vs 07	03 vs 06	04 vs 05		02 vs 07	03 vs 06	04 vs 05	
11:40 ~ 12:10	01 vs 06	02 vs 05	03 vs 07		01 vs 06	02 vs 05	03 vs 07	
12:20 ~ 12:50	01 vs 05	02 vs 06	04 vs 07		01 vs 05	02 vs 06	04 vs 07	
13:00 ~ 13:30	01 vs 07	03 vs 05	04 vs 06		01 vs 07	03 vs 05	04 vs 06	

Group 51				Group 52							
01	510107	gamblers1	05	510507	Shining Drum White Birds	01	520108	BEER POWERS	05	520508	muscle molkkers A
02	510207	kojima udon	06	510607	KANZAKIGAWA39	02	520208	MOTSUSHIGERU	06	520608	moimoi
03	510307	HIRATA MENTAMA SPORTS CLUB	07	510707	KABUKI WARRIORS	03	520308	hutaba	07	520708	Tomato Molkky
04	510407	THE BATTLEAX				04	520408	KEHI team			

24 Aug. (Sat.)	Field Number 07A	Field Number 07 B	Field Number 07 C		Field Number 08 A	Field Number 08 B	Field Number 08 C	
9:00 ~ 9:30	01 vs 02	03 vs 04	05 vs 06		01 vs 02	03 vs 04	05 vs 06	
9:40 ~ 10:10	01 vs 03	02 vs 04	05 vs 07		01 vs 03	02 vs 04	05 vs 07	
10:20 ~ 10:50	01 vs 04	02 vs 03	06 vs 07		01 vs 04	02 vs 03	06 vs 07	
11:00 ~ 11:30	02 vs 07	03 vs 06	04 vs 05		02 vs 07	03 vs 06	04 vs 05	
11:40 ~ 12:10	01 vs 06	02 vs 05	03 vs 07		01 vs 06	02 vs 05	03 vs 07	
12:20 ~ 12:50	01 vs 05	02 vs 06	04 vs 07		01 vs 05	02 vs 06	04 vs 07	
13:00 ~ 13:30	01 vs 07	03 vs 05	04 vs 06		01 vs 07	03 vs 05	04 vs 06	

IX.Match Table Preliminary Round



NIT College
Block C
Group 53 ~ 56

Group 53						Group 54					
01	530109	MOUNTAIN LIONS	05	530509	HAPPY MOON	01	540110	Suginami base chocolat	05	540510	okamoto shinai family
02	530209	ReBoRN	06	530609	Easy peasy Japanesy	02	540210	OSAKA SCORPIONS	06	540610	RANKING
03	530309	Jatkosota High School Molkky Club	07	530709	team waon	03	540310	SUGUHEN!Z	07	540710	MizusaKids
04	530409	3KY molkkyers				04	540410	waseda university aviation club			

24 Aug. (Sat.)	Field Number 09 A	Field Number 09 B	Field Number 09 C		Field Number 10 A	Field Number 10 B	Field Number 10 C	
9:00 ~ 9:30	01 vs 02	03 vs 04	05 vs 06		01 vs 02	03 vs 04	05 vs 06	
9:40 ~ 10:10	01 vs 03	02 vs 04	05 vs 07		01 vs 03	02 vs 04	05 vs 07	
10:20 ~ 10:50	01 vs 04	02 vs 03	06 vs 07		01 vs 04	02 vs 03	06 vs 07	
11:00 ~ 11:30	02 vs 07	03 vs 06	04 vs 05		02 vs 07	03 vs 06	04 vs 05	
11:40 ~ 12:10	01 vs 06	02 vs 05	03 vs 07		01 vs 06	02 vs 05	03 vs 07	
12:20 ~ 12:50	01 vs 05	02 vs 06	04 vs 07		01 vs 05	02 vs 06	04 vs 07	
13:00 ~ 13:30	01 vs 07	03 vs 05	04 vs 06		01 vs 07	03 vs 05	04 vs 06	

Group 55						Group 56					
01	550111	NoMistake	05	550511	PIYO GUNDAN	01	560112	murakami farm	05	560512	THE BIG EATERS
02	550211	TOTEC Molkky Club G	06	550611	jack&usa	02	560212	MIYATAKE NICES	06	560612	Moeller24
03	550311	TEAM Dodgers	07	550711	Molterra	03	560312	KUROWAKAI	07	560712	SSB
04	550411	TEAM UNI				04	560412	Soratoshiba Molkky Club			

24 Aug. (Sat.)	Field Number 11 A	Field Number 11 B	Field Number 11 C		Field Number 12 A	Field Number 12 B	Field Number 12 C	
9:00 ~ 9:30	01 vs 02	03 vs 04	05 vs 06		01 vs 02	03 vs 04	05 vs 06	
9:40 ~ 10:10	01 vs 03	02 vs 04	05 vs 07		01 vs 03	02 vs 04	05 vs 07	
10:20 ~ 10:50	01 vs 04	02 vs 03	06 vs 07		01 vs 04	02 vs 03	06 vs 07	
11:00 ~ 11:30	02 vs 07	03 vs 06	04 vs 05		02 vs 07	03 vs 06	04 vs 05	
11:40 ~ 12:10	01 vs 06	02 vs 05	03 vs 07		01 vs 06	02 vs 05	03 vs 07	
12:20 ~ 12:50	01 vs 05	02 vs 06	04 vs 07		01 vs 05	02 vs 06	04 vs 07	
13:00 ~ 13:30	01 vs 07	03 vs 05	04 vs 06		01 vs 07	03 vs 05	04 vs 06	

IX.Match Table Preliminary Round



NIT College
Block C
Group 57 ~ 60

Group 57				Group 58							
01	570113	Melooooody ver.2	05	570513	TOYO LUCKYS	01	580114	KMBK	05	580514	Kukunochi
02	570213	ETUDERS	06	570613	TKR	02	580214	MOSHIRI KORO KAMUI	06	580614	Fudooka Molkky
03	570313	HARUNOSORA	07	570713	Inazawa YU-kids club	03	580314	MONGOOOSE FANG	07	580714	Marunouchi Distri&IDP
04	570413	Nanae molkky A				04	580414	Co duck			

24 Aug. (Sat.)	Field Number 13 A	Field Number 13 B	Field Number 13 C		Field Number 14 A	Field Number 14 B	Field Number 14 C	
9:00 ~ 9:30	01 vs 02	03 vs 04	05 vs 06		01 vs 02	03 vs 04	05 vs 06	
9:40 ~ 10:10	01 vs 03	02 vs 04	05 vs 07		01 vs 03	02 vs 04	05 vs 07	
10:20 ~ 10:50	01 vs 04	02 vs 03	06 vs 07		01 vs 04	02 vs 03	06 vs 07	
11:00 ~ 11:30	02 vs 07	03 vs 06	04 vs 05		02 vs 07	03 vs 06	04 vs 05	
11:40 ~ 12:10	01 vs 06	02 vs 05	03 vs 07		01 vs 06	02 vs 05	03 vs 07	
12:20 ~ 12:50	01 vs 05	02 vs 06	04 vs 07		01 vs 05	02 vs 06	04 vs 07	
13:00 ~ 13:30	01 vs 07	03 vs 05	04 vs 06		01 vs 07	03 vs 05	04 vs 06	

Group 59				Group 60							
01	590115	HAKODATE Goryokaku hospital teamA	05	590515	SORAMAME JAPAN	01	600116	Himap ALBATROSSI	05	600516	MM
02	590215	BIWAKO Doughnuts Hole	06	590615	mamimumemolky	02	600216	Nakky-----s	06	600616	TEAM SAKURA
03	590315	NGT50	07	590715	me YAKE	03	600316	icanuy A	07	600716	HAPPY ZUNZUNDA
04	590415	Hokubi Molkky				04	600416	FERNANDO.K			

24 Aug. (Sat.)	Field Number 15 A	Field Number 15 B	Field Number 15 C		Field Number 16 A	Field Number 16 B	Field Number 16 C	
9:00 ~ 9:30	01 vs 02	03 vs 04	05 vs 06		01 vs 02	03 vs 04	05 vs 06	
9:40 ~ 10:10	01 vs 03	02 vs 04	05 vs 07		01 vs 03	02 vs 04	05 vs 07	
10:20 ~ 10:50	01 vs 04	02 vs 03	06 vs 07		01 vs 04	02 vs 03	06 vs 07	
11:00 ~ 11:30	02 vs 07	03 vs 06	04 vs 05		02 vs 07	03 vs 06	04 vs 05	
11:40 ~ 12:10	01 vs 06	02 vs 05	03 vs 07		01 vs 06	02 vs 05	03 vs 07	
12:20 ~ 12:50	01 vs 05	02 vs 06	04 vs 07		01 vs 05	02 vs 06	04 vs 07	
13:00 ~ 13:30	01 vs 07	03 vs 05	04 vs 06		01 vs 07	03 vs 05	04 vs 06	

IX.Match Table Preliminary Round



NIT College
Block C
Group 61 ~ 64

Group 61				Group 62							
01	610117	CABUCHANS	05	610517	K's Family	01	620118	sakuraiorthodox	05	620518	TEAM AIDA
02	610217	Kingdom	06	610617	MC SAGAMIHARA	02	620218	KISHUTAISEI	06	620618	WANDA
03	610317	CoARK	07	610717	Umbrella	03	620318	MOLKKY TARO	07	620718	Hakodate KOSEN
04	610417	ASAI Germanium				04	620418	Ankka_Terastal			

24 Aug. (Sat.)	Field Number 17 A	Field Number 17 B	Field Number 17 C		Field Number 18 A	Field Number 18 B	Field Number 18 C	
9:00 ~ 9:30	01 vs 02	03 vs 04	05 vs 06		01 vs 02	03 vs 04	05 vs 06	
9:40 ~ 10:10	01 vs 03	02 vs 04	05 vs 07		01 vs 03	02 vs 04	05 vs 07	
10:20 ~ 10:50	01 vs 04	02 vs 03	06 vs 07		01 vs 04	02 vs 03	06 vs 07	
11:00 ~ 11:30	02 vs 07	03 vs 06	04 vs 05		02 vs 07	03 vs 06	04 vs 05	
11:40 ~ 12:10	01 vs 06	02 vs 05	03 vs 07		01 vs 06	02 vs 05	03 vs 07	
12:20 ~ 12:50	01 vs 05	02 vs 06	04 vs 07		01 vs 05	02 vs 06	04 vs 07	
13:00 ~ 13:30	01 vs 07	03 vs 05	04 vs 06		01 vs 07	03 vs 05	04 vs 06	

Group 63				Group 64							
01	630119	IQ nikkurs	05	630519	Ankka Mixture	01	640120	Light Music	05	640520	Consadole Supporter Molkky CLUE
02	630219	arcana	06	630619	Sniper	02	640220	Kyoto Nobishiro Fighters	06	640620	MITAKA molkky
03	630319	DABISUKE ZOO YAMATO	07	630719	Rikkyo	03	640320	HAOHAO	07	640720	myfamily
04	630419	TEAM SENA				04	640420	mokke mokke			

24 Aug. (Sat.)	Field Number 19 A	Field Number 19 B	Field Number 19 C		Field Number 20 A	Field Number 20 B	Field Number 20 C	
9:00 ~ 9:30	01 vs 02	03 vs 04	05 vs 06		01 vs 02	03 vs 04	05 vs 06	
9:40 ~ 10:10	01 vs 03	02 vs 04	05 vs 07		01 vs 03	02 vs 04	05 vs 07	
10:20 ~ 10:50	01 vs 04	02 vs 03	06 vs 07		01 vs 04	02 vs 03	06 vs 07	
11:00 ~ 11:30	02 vs 07	03 vs 06	04 vs 05		02 vs 07	03 vs 06	04 vs 05	
11:40 ~ 12:10	01 vs 06	02 vs 05	03 vs 07		01 vs 06	02 vs 05	03 vs 07	
12:20 ~ 12:50	01 vs 05	02 vs 06	04 vs 07		01 vs 05	02 vs 06	04 vs 07	
13:00 ~ 13:30	01 vs 07	03 vs 05	04 vs 06		01 vs 07	03 vs 05	04 vs 06	

IX.Match Table Preliminary Round



NIT College
Block C
Group 65 ~ 68

Group 65					Group 66						
01	650121	team SEISHUN JACK	05	650521	Wisteria paddy crew	01	660122	Quokka	05	660522	HANNO MOLKKY CLUB
02	650221	KitamiOnions	06	650621	Japan Molkky Park	02	660222	Bernese Mountain Molkky	06	660622	MIRACLES
03	650321	DMC	07	650721	Orange Streams	03	660322	team terakoya	07	660722	ERDINGER's
04	650421	Renoball				04	660422	KACHIGARASU			

24 Aug. (Sat.)	Field Number 21A	Field Number 21 B	Field Number 21 C		Field Number 22 A	Field Number 22 B	Field Number 22 C	
9:00 ~ 9:30	01 vs 02	03 vs 04	05 vs 06		01 vs 02	03 vs 04	05 vs 06	
9:40 ~ 10:10	01 vs 03	02 vs 04	05 vs 07		01 vs 03	02 vs 04	05 vs 07	
10:20 ~ 10:50	01 vs 04	02 vs 03	06 vs 07		01 vs 04	02 vs 03	06 vs 07	
11:00 ~ 11:30	02 vs 07	03 vs 06	04 vs 05		02 vs 07	03 vs 06	04 vs 05	
11:40 ~ 12:10	01 vs 06	02 vs 05	03 vs 07		01 vs 06	02 vs 05	03 vs 07	
12:20 ~ 12:50	01 vs 05	02 vs 06	04 vs 07		01 vs 05	02 vs 06	04 vs 07	
13:00 ~ 13:30	01 vs 07	03 vs 05	04 vs 06		01 vs 07	03 vs 05	04 vs 06	

Group 67					Group 68						
01	670123	Team KURIBOU	05	670523	No Error	01	680124	Hanachu Molkky Club	05	680524	UNIMARU
02	670223	Sfida F	06	670623	RINRINHARUHARU	02	680224	TosuMolkkers S.O.K.S.K	06	680624	DYUbee
03	670323	Hakodate goryokaku hospital B	07	670723	Rakimo	03	680324	Mileage DANGO tour	07	680724	Back Exstation 45
04	670423	DAISANDAI JAWS				04	680424	Kushiro Molkky Club			

24 Aug. (Sat.)	Field Number 23 A	Field Number 23 B	Field Number 23C		Field Number 24 A	Field Number 24 B	Field Number 24 C	
9:00 ~ 9:30	01 vs 02	03 vs 04	05 vs 06		01 vs 02	03 vs 04	05 vs 06	
9:40 ~ 10:10	01 vs 03	02 vs 04	05 vs 07		01 vs 03	02 vs 04	05 vs 07	
10:20 ~ 10:50	01 vs 04	02 vs 03	06 vs 07		01 vs 04	02 vs 03	06 vs 07	
11:00 ~ 11:30	02 vs 07	03 vs 06	04 vs 05		02 vs 07	03 vs 06	04 vs 05	
11:40 ~ 12:10	01 vs 06	02 vs 05	03 vs 07		01 vs 06	02 vs 05	03 vs 07	
12:20 ~ 12:50	01 vs 05	02 vs 06	04 vs 07		01 vs 05	02 vs 06	04 vs 07	
13:00 ~ 13:30	01 vs 07	03 vs 05	04 vs 06		01 vs 07	03 vs 05	04 vs 06	

IX.Match Table Preliminary Round



NIT College
Block C
Group 69 ~ 70

Group 69					Group 70						
01	690125	Country Stand	05	690525	Mystic Mavericks	01	700126	Central Japan	05	700526	Tsukuba Skittles MKRTS
02	690225	HOKUTOSEI alc.	06	690625	C2 Quartet	02	700226	Arabiki Nuts	06	700626	TK ESPRESSIVO
03	690325	KING KANKARIN	07	690725	Kulu-Ya-Ku	03	700326	LlamaShin	07	700726	TOKACHI AOILO MOLKKY CLUB
04	690425	YELLFTR				04	700426	PANENKA			

24 Aug. (Sat.)	Field Number 25 A	Field Number 25 B	Field Number 25 C		Field Number 26 A	Field Number 26 B	Field Number 26 C	
9:00 ~ 9:30	01 vs 02	03 vs 04	05 vs 06		01 vs 02	03 vs 04	05 vs 06	
9:40 ~ 10:10	01 vs 03	02 vs 04	05 vs 07		01 vs 03	02 vs 04	05 vs 07	
10:20 ~ 10:50	01 vs 04	02 vs 03	06 vs 07		01 vs 04	02 vs 03	06 vs 07	
11:00 ~ 11:30	02 vs 07	03 vs 06	04 vs 05		02 vs 07	03 vs 06	04 vs 05	
11:40 ~ 12:10	01 vs 06	02 vs 05	03 vs 07		01 vs 06	02 vs 05	03 vs 07	
12:20 ~ 12:50	01 vs 05	02 vs 06	04 vs 07		01 vs 05	02 vs 06	04 vs 07	
13:00 ~ 13:30	01 vs 07	03 vs 05	04 vs 06		01 vs 07	03 vs 05	04 vs 06	

IX.Match Table Preliminary Round



NIT College
Block D
Group 71 ~ 74

Group 71					Group 72						
01	710101	NIJICON TEAM A	05	710501	Three K Two Y	01	720102	NIJICON TEAM B	05	720502	hadashikozo
02	710201	RiRa 50s club	06	710601	Kaveri HiroShimane	02	720202	My to Vypijem	06	720602	Bacchus
03	710301	molky ishigakijima Q	07	710701	MARUSHIN LOGISTICS	03	720302	JP1 SPECIAL	07	720702	mars dragon flame
04	710401	Run,pepa!				04	720402	Toyama			

24 Aug. (Sat.)	Field Number 01 A	Field Number 01 B	Field Number 01 C		Field Number 02 A	Field Number 02 B	Field Number 02 C	
14:00 ~ 14:30	01 vs 02	03 vs 04	05 vs 06		01 vs 02	03 vs 04	05 vs 06	
14:40 ~ 15:10	01 vs 03	02 vs 04	05 vs 07		01 vs 03	02 vs 04	05 vs 07	
15:20 ~ 15:50	01 vs 04	02 vs 03	06 vs 07		01 vs 04	02 vs 03	06 vs 07	
16:00 ~ 16:30	02 vs 07	03 vs 06	04 vs 05		02 vs 07	03 vs 06	04 vs 05	
16:40 ~ 17:10	01 vs 06	02 vs 05	03 vs 07		01 vs 06	02 vs 05	03 vs 07	
17:20 ~ 17:50	01 vs 05	02 vs 06	04 vs 07		01 vs 05	02 vs 06	04 vs 07	
18:00 ~ 18:30	01 vs 07	03 vs 05	04 vs 06		01 vs 07	03 vs 05	04 vs 06	

Group 73					Group 74						
01	730103	High Five	05	730503	SCATMAN★HAJIME	01	740104	Team Estonia	05	740504	SKKBR
02	730203	Modo2024	06	730603	Hapimoe	02	740204	UNLUCKY	06	740604	Wagaya
03	730303	MIRACLE HIKKA	07	730703	CCNG	03	740304	TOKYO HANABI	07	740704	Kiseki no Banana Dokokai
04	730403	Fukushima Molky Club				04	740404	HIGASHI-IKE-BUKURO			

24 Aug. (Sat.)	Field Number 03 A	Field Number 03 B	Field Number 03 C		Field Number 04 A	Field Number 04 B	Field Number 04 C	
14:00 ~ 14:30	01 vs 02	03 vs 04	05 vs 06		01 vs 02	03 vs 04	05 vs 06	
14:40 ~ 15:10	01 vs 03	02 vs 04	05 vs 07		01 vs 03	02 vs 04	05 vs 07	
15:20 ~ 15:50	01 vs 04	02 vs 03	06 vs 07		01 vs 04	02 vs 03	06 vs 07	
16:00 ~ 16:30	02 vs 07	03 vs 06	04 vs 05		02 vs 07	03 vs 06	04 vs 05	
16:40 ~ 17:10	01 vs 06	02 vs 05	03 vs 07		01 vs 06	02 vs 05	03 vs 07	
17:20 ~ 17:50	01 vs 05	02 vs 06	04 vs 07		01 vs 05	02 vs 06	04 vs 07	
18:00 ~ 18:30	01 vs 07	03 vs 05	04 vs 06		01 vs 07	03 vs 05	04 vs 06	

IX.Match Table Preliminary Round



NIT College
Block D
Group 75 ~ 78

Group 75					Group 76						
01	750105	Mölkky Bar Kids	05	750505	KARABAO	01	760106	HK Mölkky - HappyVibes	05	760506	Liitto Maatalous
02	750205	KASHIWA CLOCK	06	750605	Team Red	02	760206	CLIFF CLUB	06	760606	TPCM
03	750305	aile	07	750705	YOSENTOPPA'S	03	760306	Chiba Seminar	07	760706	Hayashi Family
04	750405	marumoru34				04	760406	Kamelia SC			

24 Aug. (Sat.)	Field Number 05 A	Field Number 05 B	Field Number 05 C		Field Number 06 A	Field Number 06 B	Field Number 06 C	
14:00 ~ 14:30	01 vs 02	03 vs 04	05 vs 06		01 vs 02	03 vs 04	05 vs 06	
14:40 ~ 15:10	01 vs 03	02 vs 04	05 vs 07		01 vs 03	02 vs 04	05 vs 07	
15:20 ~ 15:50	01 vs 04	02 vs 03	06 vs 07		01 vs 04	02 vs 03	06 vs 07	
16:00 ~ 16:30	02 vs 07	03 vs 06	04 vs 05		02 vs 07	03 vs 06	04 vs 05	
16:40 ~ 17:10	01 vs 06	02 vs 05	03 vs 07		01 vs 06	02 vs 05	03 vs 07	
17:20 ~ 17:50	01 vs 05	02 vs 06	04 vs 07		01 vs 05	02 vs 06	04 vs 07	
18:00 ~ 18:30	01 vs 07	03 vs 05	04 vs 06		01 vs 07	03 vs 05	04 vs 06	

Group 77					Group 78						
01	770107	HK Mölkky - PLK2	05	770507	Umigame	01	780108	LE COEUR VENDEEN	05	780508	fernando.B
02	770207	IQOS LOVE	06	770607	TOYOBO Taekwondo Molkky cl	02	780208	TANASHI3	06	780608	Kyoto Doseeees
03	770307	Kamidanomi	07	770707	NAKATA Molkky Club	03	780308	ZEN	07	780708	F.UEDA
04	770407	MOLKKY HEROES				04	780408	MORUO DOJO			

24 Aug. (Sat.)	Field Number 07 A	Field Number 07 B	Field Number 07 C		Field Number 08 A	Field Number 08 B	Field Number 08 C	
14:00 ~ 14:30	01 vs 02	03 vs 04	05 vs 06		01 vs 02	03 vs 04	05 vs 06	
14:40 ~ 15:10	01 vs 03	02 vs 04	05 vs 07		01 vs 03	02 vs 04	05 vs 07	
15:20 ~ 15:50	01 vs 04	02 vs 03	06 vs 07		01 vs 04	02 vs 03	06 vs 07	
16:00 ~ 16:30	02 vs 07	03 vs 06	04 vs 05		02 vs 07	03 vs 06	04 vs 05	
16:40 ~ 17:10	01 vs 06	02 vs 05	03 vs 07		01 vs 06	02 vs 05	03 vs 07	
17:20 ~ 17:50	01 vs 05	02 vs 06	04 vs 07		01 vs 05	02 vs 06	04 vs 07	
18:00 ~ 18:30	01 vs 07	03 vs 05	04 vs 06		01 vs 07	03 vs 05	04 vs 06	

IX.Match Table Preliminary Round



NIT College

Block D

Group 79 ~ 82

Group 79				Group 80							
01	790109	HK Molkky - Kung Fu Molkky	05	790509	EAST THUNDER	01	800110	Flugschneisenwerfer	05	800510	YUKUMOLKKYY
02	790209	icanuy B	06	790609	T M NETWORK	02	800210	Mochari-ume	06	800610	SHOGE FRIENDS
03	790309	Nakagawa mini mol club	07	790709	Field Trip	03	800310	Katsushika Molkky Club	07	800710	Creepy Acorns
04	790409	HY.M.C teamA				04	800410	DOIRYO STARS			

24 Aug. (Sat.)	Field Number 09 A	Field Number 09 B	Field Number 09 C		Field Number 10 A	Field Number 10 B	Field Number 10 C	
14:00 ~ 14:30	01 vs 02	03 vs 04	05 vs 06		01 vs 02	03 vs 04	05 vs 06	
14:40 ~ 15:10	01 vs 03	02 vs 04	05 vs 07		01 vs 03	02 vs 04	05 vs 07	
15:20 ~ 15:50	01 vs 04	02 vs 03	06 vs 07		01 vs 04	02 vs 03	06 vs 07	
16:00 ~ 16:30	02 vs 07	03 vs 06	04 vs 05		02 vs 07	03 vs 06	04 vs 05	
16:40 ~ 17:10	01 vs 06	02 vs 05	03 vs 07		01 vs 06	02 vs 05	03 vs 07	
17:20 ~ 17:50	01 vs 05	02 vs 06	04 vs 07		01 vs 05	02 vs 06	04 vs 07	
18:00 ~ 18:30	01 vs 07	03 vs 05	04 vs 06		01 vs 07	03 vs 05	04 vs 06	

Group 81				Group 82							
01	810111	HSM Molkky	05	810511	NIKOYAMA	01	820112	HMS Travelling Molkky with Bac	05	820512	ozora sports recreation club
02	810211	HOKKAIDO FIN KYO	06	810611	hot hokubi	02	820212	Team Kiitos	06	820612	Spring Dogs
03	810311	SENDAI MOLKKY HAYASHI RI	07	810711	Goofy fox	03	820312	Yellow Hibiscus	07	820712	Mix Nuts
04	810411	STARMOL				04	820412	Fuji Oilers			

24 Aug. (Sat.)	Field Number 11 A	Field Number 11 B	Field Number 11 C		Field Number 12 A	Field Number 12 B	Field Number 12 C	
14:00 ~ 14:30	01 vs 02	03 vs 04	05 vs 06		01 vs 02	03 vs 04	05 vs 06	
14:40 ~ 15:10	01 vs 03	02 vs 04	05 vs 07		01 vs 03	02 vs 04	05 vs 07	
15:20 ~ 15:50	01 vs 04	02 vs 03	06 vs 07		01 vs 04	02 vs 03	06 vs 07	
16:00 ~ 16:30	02 vs 07	03 vs 06	04 vs 05		02 vs 07	03 vs 06	04 vs 05	
16:40 ~ 17:10	01 vs 06	02 vs 05	03 vs 07		01 vs 06	02 vs 05	03 vs 07	
17:20 ~ 17:50	01 vs 05	02 vs 06	04 vs 07		01 vs 05	02 vs 06	04 vs 07	
18:00 ~ 18:30	01 vs 07	03 vs 05	04 vs 06		01 vs 07	03 vs 05	04 vs 06	

IX.Match Table Preliminary Round



NIT College
Block D
Group 83 ~ 86

Group 83						Group 84					
01	830113	HK Molkky - PLK1	05	830513	MOMOASAGAO	01	840114	Game of Throws	05	840514	KIZUKURI
02	830213	Kajiya	06	830613	KTMC	02	840214	yamadamura	06	840614	Suginami MolkLove
03	830313	Woo mol sankaku dan B	07	830713	RUMOI GEK	03	840314	OodakaRoutoruzu	07	840714	Takenoyu Bekkan A
04	830413	Nomibo				04	840414	YOU.FO Club Tokyo			

24 Aug. (Sat.)	Field Number 13 A	Field Number 13 B	Field Number 13 C		Field Number 14 A	Field Number 14 B	Field Number 14 C	
14:00 ~ 14:30	01 vs 02	03 vs 04	05 vs 06		01 vs 02	03 vs 04	05 vs 06	
14:40 ~ 15:10	01 vs 03	02 vs 04	05 vs 07		01 vs 03	02 vs 04	05 vs 07	
15:20 ~ 15:50	01 vs 04	02 vs 03	06 vs 07		01 vs 04	02 vs 03	06 vs 07	
16:00 ~ 16:30	02 vs 07	03 vs 06	04 vs 05		02 vs 07	03 vs 06	04 vs 05	
16:40 ~ 17:10	01 vs 06	02 vs 05	03 vs 07		01 vs 06	02 vs 05	03 vs 07	
17:20 ~ 17:50	01 vs 05	02 vs 06	04 vs 07		01 vs 05	02 vs 06	04 vs 07	
18:00 ~ 18:30	01 vs 07	03 vs 05	04 vs 06		01 vs 07	03 vs 05	04 vs 06	

Group 85						Group 86					
01	850115	Czech Happiness	05	850515	KMJ	01	860116	Osuko Joku	05	860516	Akashi Molkky Club
02	850215	mispo_AU	06	850615	SAMURAI AMICUS	02	860216	Date torippirs	06	860616	cogoce ace
03	850315	sun visor enthusiast group	07	850715	Tsukuba Skittles MYJAN	03	860316	toveri	07	860716	HARAGURO4
04	850415	team sika de sita				04	860416	KINDAI WAKAYAMA			

24 Aug. (Sat.)	Field Number 15 A	Field Number 15B	Field Number 15 C		Field Number 16 A	Field Number 16B	Field Number 16 C	
14:00 ~ 14:30	01 vs 02	03 vs 04	05 vs 06		01 vs 02	03 vs 04	05 vs 06	
14:40 ~ 15:10	01 vs 03	02 vs 04	05 vs 07		01 vs 03	02 vs 04	05 vs 07	
15:20 ~ 15:50	01 vs 04	02 vs 03	06 vs 07		01 vs 04	02 vs 03	06 vs 07	
16:00 ~ 16:30	02 vs 07	03 vs 06	04 vs 05		02 vs 07	03 vs 06	04 vs 05	
16:40 ~ 17:10	01 vs 06	02 vs 05	03 vs 07		01 vs 06	02 vs 05	03 vs 07	
17:20 ~ 17:50	01 vs 05	02 vs 06	04 vs 07		01 vs 05	02 vs 06	04 vs 07	
18:00 ~ 18:30	01 vs 07	03 vs 05	04 vs 06		01 vs 07	03 vs 05	04 vs 06	

IX.Match Table Preliminary Round



NIT College
Block D
Group 87 ~ 90

Group 87					Group 88						
01	870117	Les Claquettes Chaussettes	05	870517	Enimwamorukkunokai	01	880118	HK Molkky - Avengers	05	880518	vocosnergel
02	870217	CTS	06	870617	Yokohama Inti Raymers	02	880218	KASHIWAUDON-KASHIWAMES	06	880618	hibiya molkky club
03	870317	Sfida M	07	870717	Loch North	03	880318	Arse Hikage	07	880718	mix juice
04	870417	Fukagawa WH_hips young stars				04	880418	MolkaariSannomiya			

24 Aug. (Sat.)	Field Number 17 A	Field Number 17 B	Field Number 17 C		Field Number 18 A	Field Number 18 B	Field Number 18 C	
14:00 ~ 14:30	01 vs 02	03 vs 04	05 vs 06		01 vs 02	03 vs 04	05 vs 06	
14:40 ~ 15:10	01 vs 03	02 vs 04	05 vs 07		01 vs 03	02 vs 04	05 vs 07	
15:20 ~ 15:50	01 vs 04	02 vs 03	06 vs 07		01 vs 04	02 vs 03	06 vs 07	
16:00 ~ 16:30	02 vs 07	03 vs 06	04 vs 05		02 vs 07	03 vs 06	04 vs 05	
16:40 ~ 17:10	01 vs 06	02 vs 05	03 vs 07		01 vs 06	02 vs 05	03 vs 07	
17:20 ~ 17:50	01 vs 05	02 vs 06	04 vs 07		01 vs 05	02 vs 06	04 vs 07	
18:00 ~ 18:30	01 vs 07	03 vs 05	04 vs 06		01 vs 07	03 vs 05	04 vs 06	

Group 89					Group 90						
01	890119	HMS Baton Mouche	05	890519	Molkky University of Technolog	01	900120	K-MOLKKY	05	900520	BUNMOL
02	890219	Dokkyo PerDöMö	06	890619	KAMAKURA 4-GENE	02	900220	NAHMO COISA	06	900620	Lyra
03	890319	KUL 47ers	07	890719	MOLGONZ HAKONE	03	900320	TEAM RYAN	07	900720	kuramol
04	890419	L-THINKS				04	900420	Basilisk			

24 Aug. (Sat.)	Field Number 19 A	Field Number 19 B	Field Number 19 C		Field Number 20 A	Field Number 20 B	Field Number 20 C	
14:00 ~ 14:30	01 vs 02	03 vs 04	05 vs 06		01 vs 02	03 vs 04	05 vs 06	
14:40 ~ 15:10	01 vs 03	02 vs 04	05 vs 07		01 vs 03	02 vs 04	05 vs 07	
15:20 ~ 15:50	01 vs 04	02 vs 03	06 vs 07		01 vs 04	02 vs 03	06 vs 07	
16:00 ~ 16:30	02 vs 07	03 vs 06	04 vs 05		02 vs 07	03 vs 06	04 vs 05	
16:40 ~ 17:10	01 vs 06	02 vs 05	03 vs 07		01 vs 06	02 vs 05	03 vs 07	
17:20 ~ 17:50	01 vs 05	02 vs 06	04 vs 07		01 vs 05	02 vs 06	04 vs 07	
18:00 ~ 18:30	01 vs 07	03 vs 05	04 vs 06		01 vs 07	03 vs 05	04 vs 06	

IX.Match Table Preliminary Round



NIT College
Block D
Group 91 ~ 94

Group 91						Group 92					
01	910121	TERUMAERS	05	910521	KAWATA molkky club	01	920122	comodo	05	920522	Bee-Mo
02	910221	SANZUI	06	910621	NKNK-Veli	02	920222	HiroShimane Dgumi	06	920622	team HAPPY
03	910321	YEBISU	07	910721	SHIMBASHI×OMOMUKI	03	920322	yips shimizu gumi	07	920722	OMAKASE order2
04	910421	Molkky Machida-KleinBleu				04	920422	YELLN4			

24 Aug. (Sat.)	Field Number 21 A	Field Number 21 B	Field Number 21 C		Field Number 22 A	Field Number 22 B	Field Number 22 C	
14:00 ~ 14:30	01 vs 02	03 vs 04	05 vs 06		01 vs 02	03 vs 04	05 vs 06	
14:40 ~ 15:10	01 vs 03	02 vs 04	05 vs 07		01 vs 03	02 vs 04	05 vs 07	
15:20 ~ 15:50	01 vs 04	02 vs 03	06 vs 07		01 vs 04	02 vs 03	06 vs 07	
16:00 ~ 16:30	02 vs 07	03 vs 06	04 vs 05		02 vs 07	03 vs 06	04 vs 05	
16:40 ~ 17:10	01 vs 06	02 vs 05	03 vs 07		01 vs 06	02 vs 05	03 vs 07	
17:20 ~ 17:50	01 vs 05	02 vs 06	04 vs 07		01 vs 05	02 vs 06	04 vs 07	
18:00 ~ 18:30	01 vs 07	03 vs 05	04 vs 06		01 vs 07	03 vs 05	04 vs 06	

Group 93						Group 94					
01	930123	NIPPA PETANCO	05	930523	Tricolore Nuggets	01	940124	RAMOS	05	940524	Syoshinsya
02	930223	STeAK	06	930623	Little BOSS	02	940224	MK-Dragons	06	940624	jaja ohchu
03	930323	WAMoWAMo panic	07	930723	Hotenz	03	940324	Intelligent Fool	07	940724	YAMAHANA INCALCIPE
04	930423	Team TAKOJIZO				04	940424	otopuke moruchan's			

24 Aug. (Sat.)	Field Number 23 A	Field Number 23 B	Field Number 23 C		Field Number 24 A	Field Number 24 B	Field Number 24 C	
14:00 ~ 14:30	01 vs 02	03 vs 04	05 vs 06		01 vs 02	03 vs 04	05 vs 06	
14:40 ~ 15:10	01 vs 03	02 vs 04	05 vs 07		01 vs 03	02 vs 04	05 vs 07	
15:20 ~ 15:50	01 vs 04	02 vs 03	06 vs 07		01 vs 04	02 vs 03	06 vs 07	
16:00 ~ 16:30	02 vs 07	03 vs 06	04 vs 05		02 vs 07	03 vs 06	04 vs 05	
16:40 ~ 17:10	01 vs 06	02 vs 05	03 vs 07		01 vs 06	02 vs 05	03 vs 07	
17:20 ~ 17:50	01 vs 05	02 vs 06	04 vs 07		01 vs 05	02 vs 06	04 vs 07	
18:00 ~ 18:30	01 vs 07	03 vs 05	04 vs 06		01 vs 07	03 vs 05	04 vs 06	

IX.Match Table Preliminary Round



NIT College
Block D
Group 95 ~ 96

Group 95						Group 96					
01	950125	TEAM TAIJIRO	05	950525	One Team	01	960126	Toyama Brave Thunders	05	960526	UmiFuko100
02	950225	ZANGI STAR	06	950625	milkyway	02	960226	HAKONIWA	06	960626	SOKOSUKI
03	950325	ADPANDARS	07	950725	Hitoyoshi Peanuts	03	960326	Hercules Nagasaki	07	960726	NANAE MOLKKY B
04	950425	KINDZMOLKKAARI				04	960426	5Turn Spiders			

24 Aug. (Sat.)	Field Number 25 A	Field Number 25 B	Field Number 25 C		Field Number 26 A	Field Number 26 B	Field Number 26 C	
14:00 ~ 14:30	01 vs 02	03 vs 04	05 vs 06		01 vs 02	03 vs 04	05 vs 06	
14:40 ~ 15:10	01 vs 03	02 vs 04	05 vs 07		01 vs 03	02 vs 04	05 vs 07	
15:20 ~ 15:50	01 vs 04	02 vs 03	06 vs 07		01 vs 04	02 vs 03	06 vs 07	
16:00 ~ 16:30	02 vs 07	03 vs 06	04 vs 05		02 vs 07	03 vs 06	04 vs 05	
16:40 ~ 17:10	01 vs 06	02 vs 05	03 vs 07		01 vs 06	02 vs 05	03 vs 07	
17:20 ~ 17:50	01 vs 05	02 vs 06	04 vs 07		01 vs 05	02 vs 06	04 vs 07	
18:00 ~ 18:30	01 vs 07	03 vs 05	04 vs 06		01 vs 07	03 vs 05	04 vs 06	

IX.Match Table Finals Tournament Round1



日本モルック協会
Japan Milk Association

Finals tournament Round1 Showa Park

Field Number	Preliminary Round Ranking			Field Number	Preliminary Round Ranking			Field Number	Preliminary Round Ranking			Field Number	Preliminary Round Ranking		
01 A	Group	1	1位	05 A	Group	5	1位	09 A	Group	9	1位	03 B	Group	13	1位
Game Number	Group	33	2位	Game Number	Group	37	2位	Game Number	Group	41	2位	Game Number	Group	45	2位
101	Group	65	1位	105	Group	69	1位	109	Group	73	1位	113	Group	77	1位

Field Number	Preliminary Round Ranking			Field Number	Preliminary Round Ranking			Field Number	Preliminary Round Ranking			Field Number	Preliminary Round Ranking		
02 A	Group	2	2位	06 A	Group	6	2位	10 A	Group	10	2位	04 B	Group	14	2位
Game Number	Group	34	1位	Game Number	Group	38	1位	Game Number	Group	42	1位	Game Number	Group	46	1位
102	Group	66	2位	106	Group	70	2位	110	Group	74	2位	114	Group	78	2位

Field Number	Preliminary Round Ranking			Field Number	Preliminary Round Ranking			Field Number	Preliminary Round Ranking			Field Number	Preliminary Round Ranking		
03 A	Group	3	1位	07 A	Group	7	1位	01 B	Group	11	1位	05 B	Group	15	1位
Game Number	Group	35	2位	Game Number	Group	39	2位	Game Number	Group	43	2位	Game Number	Group	47	2位
103	Group	67	1位	107	Group	71	1位	111	Group	75	1位	115	Group	79	1位

Field Number	Preliminary Round Ranking			Field Number	Preliminary Round Ranking			Field Number	Preliminary Round Ranking			Field Number	Preliminary Round Ranking		
04 A	Group	4	2位	08 A	Group	8	2位	02 B	Group	12	2位	06 B	Group	16	2位
Game Number	Group	36	1位	Game Number	Group	40	1位	Game Number	Group	44	1位	Game Number	Group	48	1位
104	Group	68	2位	108	Group	72	2位	112	Group	76	2位	116	Group	80	2位

IX.Match Table Finals Tournament Round1



日本モルック協会
Japan Milk Association

Finals tournament Round1 Showa Park

Field Number	Preliminary Round Ranking			Field Number	Preliminary Round Ranking			Field Number	Preliminary Round Ranking			Field Number	Preliminary Round Ranking		
07 B	Group	17	1位	01 C	Group	21	1位	05 C	Group	25	1位	09 C	Group	29	1位
Game Number	Group	49	2位	Game Number	Group	53	2位	Game Number	Group	57	2位	Game Number	Group	61	2位
117	Group	81	1位	121	Group	85	1位	125	Group	89	1位	129	Group	93	1位

Field Number	Preliminary Round Ranking			Field Number	Preliminary Round Ranking			Field Number	Preliminary Round Ranking			Field Number	Preliminary Round Ranking		
08 B	Group	18	2位	02 C	Group	22	2位	06 C	Group	26	2位	10 C	Group	30	2位
Game Number	Group	50	1位	Game Number	Group	54	1位	Game Number	Group	58	1位	Game Number	Group	62	1位
118	Group	82	2位	122	Group	86	2位	126	Group	90	2位	130	Group	94	2位

Field Number	Preliminary Round Ranking			Field Number	Preliminary Round Ranking			Field Number	Preliminary Round Ranking			Field Number	Preliminary Round Ranking		
09 B	Group	19	1位	03 C	Group	23	1位	07 C	Group	27	1位	11 A	Group	31	1位
Game Number	Group	51	2位	Game Number	Group	55	2位	Game Number	Group	59	2位	Game Number	Group	63	2位
119	Group	83	1位	123	Group	87	1位	127	Group	91	1位	131	Group	95	1位

Field Number	Preliminary Round Ranking			Field Number	Preliminary Round Ranking			Field Number	Preliminary Round Ranking			Field Number	Preliminary Round Ranking		
10 B	Group	20	2位	04 C	Group	24	2位	08 C	Group	28	2位	12 A	Group	32	2位
Game Number	Group	52	1位	Game Number	Group	56	1位	Game Number	Group	60	1位	Game Number	Group	64	1位
120	Group	84	2位	124	Group	88	2位	128	Group	92	2位	132	Group	96	2位

IX.Match Table Finals Tournament Round1



日本モルック協会
Japan Milk Association

Finals tournament Round1 Showa Park

Field Number	Preliminary Round Ranking			Field Number	Preliminary Round Ranking			Field Number	Preliminary Round Ranking			Field Number	Preliminary Round Ranking		
13 A	Group	1	2位	17 A	Group	5	2位	11 B	Group	9	2位	15 B	Group	13	2位
Game Number	Group	33	1位	Game Number	Group	37	1位	Game Number	Group	41	1位	Game Number	Group	45	1位
133	Group	65	2位	137	Group	69	2位	141	Group	73	2位	145	Group	77	2位

Field Number	Preliminary Round Ranking			Field Number	Preliminary Round Ranking			Field Number	Preliminary Round Ranking			Field Number	Preliminary Round Ranking		
14 A	Group	2	1位	18 A	Group	6	1位	12 B	Group	10	1位	16 B	Group	14	1位
Game Number	Group	34	2位	Game Number	Group	38	2位	Game Number	Group	42	2位	Game Number	Group	46	2位
134	Group	66	1位	138	Group	70	1位	142	Group	74	1位	146	Group	78	1位

Field Number	Preliminary Round Ranking			Field Number	Preliminary Round Ranking			Field Number	Preliminary Round Ranking			Field Number	Preliminary Round Ranking		
15 A	Group	3	2位	19 A	Group	7	2位	13 B	Group	11	2位	17 B	Group	15	2位
Game Number	Group	35	1位	Game Number	Group	39	1位	Game Number	Group	43	1位	Game Number	Group	47	1位
135	Group	67	2位	139	Group	71	2位	143	Group	75	2位	147	Group	79	2位

Field Number	Preliminary Round Ranking			Field Number	Preliminary Round Ranking			Field Number	Preliminary Round Ranking			Field Number	Preliminary Round Ranking		
16 A	Group	4	1位	20 A	Group	8	1位	14 B	Group	12	1位	18 B	Group	16	1位
Game Number	Group	36	2位	Game Number	Group	40	2位	Game Number	Group	44	2位	Game Number	Group	48	2位
136	Group	68	1位	140	Group	72	1位	144	Group	76	1位	148	Group	80	1位

IX.Match Table Finals Tournament Round1



日本モルック協会
Japan Milk Association

Finals tournament Round1 Showa Park

Field Number	Preliminary Round Ranking			Field Number	Preliminary Round Ranking			Field Number	Preliminary Round Ranking			Field Number	Preliminary Round Ranking		
19 B	Group	17	2位	13 C	Group	21	2位	17 C	Group	25	2位	21 A	Group	29	2位
Game Number	Group	49	1位	Game Number	Group	53	1位	Game Number	Group	57	1位	Game Number	Group	61	1位
149	Group	81	2位	153	Group	85	2位	157	Group	89	2位	161	Group	93	2位

Field Number	Preliminary Round Ranking			Field Number	Preliminary Round Ranking			Field Number	Preliminary Round Ranking			Field Number	Preliminary Round Ranking		
20 B	Group	18	1位	14 C	Group	22	1位	18 C	Group	26	1位	21 B	Group	30	1位
Game Number	Group	50	2位	Game Number	Group	54	2位	Game Number	Group	58	2位	Game Number	Group	62	2位
150	Group	82	1位	154	Group	86	1位	158	Group	90	1位	162	Group	94	1位

Field Number	Preliminary Round Ranking			Field Number	Preliminary Round Ranking			Field Number	Preliminary Round Ranking			Field Number	Preliminary Round Ranking		
11 C	Group	19	2位	15 C	Group	23	2位	19 C	Group	27	2位	21 C	Group	31	2位
Game Number	Group	51	1位	Game Number	Group	55	1位	Game Number	Group	59	1位	Game Number	Group	63	1位
151	Group	83	2位	155	Group	87	2位	159	Group	91	2位	163	Group	95	2位

Field Number	Preliminary Round Ranking			Field Number	Preliminary Round Ranking			Field Number	Preliminary Round Ranking			Field Number	Preliminary Round Ranking		
12 C	Group	20	1位	16 C	Group	24	1位	20 C	Group	28	1位	22 A	Group	32	1位
Game Number	Group	52	2位	Game Number	Group	56	2位	Game Number	Group	60	2位	Game Number	Group	64	2位
152	Group	84	1位	156	Group	88	1位	160	Group	92	1位	164	Group	96	1位

IX.Match Table Finals Tournament Round2-



上位トーナメント2回戦以降 昭和公園
Finals tournament Round2- Showa Park



IX.Match Table Friendly Tournament Round1



TAIYO GROUP presents Friendly Tournament Round1 N.I.T. Hakodate College

Field Number	Preliminary Round Ranking			Field Number	Preliminary Round Ranking			Field Number	Preliminary Round Ranking			Field Number	Preliminary Round Ranking		
01 A	Group	1	3位	04 A	Group	5	4位	05 B	Group	9	5位	06 B	Group	13	3位
	Group	25	4位		Group	29	5位		Group	33	3位		Group	37	4位
Game Number	Group	49	5位	Game Number	Group	53	3位	Game Number	Group	57	4位	Game Number	Group	61	5位
1001	Group	73	3位	1005	Group	77	4位	1009	Group	81	5位	1013	Group	85	3位
Field Number	Preliminary Round Ranking			Field Number	Preliminary Round Ranking			Field Number	Preliminary Round Ranking			Field Number	Preliminary Round Ranking		
03 A	Group	2	4位	04 B	Group	6	5位	05 C	Group	10	3位	06 C	Group	14	4位
	Group	26	5位		Group	30	3位		Group	34	4位		Group	38	5位
Game Number	Group	50	3位	Game Number	Group	54	4位	Game Number	Group	58	5位	Game Number	Group	62	3位
1002	Group	74	4位	1006	Group	78	5位	1010	Group	82	3位	1014	Group	86	4位
Field Number	Preliminary Round Ranking			Field Number	Preliminary Round Ranking			Field Number	Preliminary Round Ranking			Field Number	Preliminary Round Ranking		
03 B	Group	3	5位	04 C	Group	7	3位	01 B	Group	11	4位	07 A	Group	15	5位
	Group	27	3位		Group	31	4位		Group	35	5位		Group	39	3位
Game Number	Group	51	4位	Game Number	Group	55	5位	Game Number	Group	59	3位	Game Number	Group	63	4位
1003	Group	75	5位	1007	Group	79	3位	1011	Group	83	4位	1015	Group	87	5位
Field Number	Preliminary Round Ranking			Field Number	Preliminary Round Ranking			Field Number	Preliminary Round Ranking			Field Number	Preliminary Round Ranking		
03 C	Group	4	3位	05 A	Group	8	4位	06 A	Group	12	5位	07 B	Group	16	3位
	Group	28	4位		Group	32	5位		Group	36	3位		Group	40	4位
Game Number	Group	52	5位	Game Number	Group	56	3位	Game Number	Group	60	4位	Game Number	Group	64	5位
1004	Group	76	3位	1008	Group	80	4位	1012	Group	84	5位	1016	Group	88	3位

IX.Match Table Friendly Tournament Round1



TAIYO GROUP presents Friendly Tournament Round1 N.I.T. Hakodate College

Field Number	Preliminary Round Ranking			Field Number	Preliminary Round Ranking			Field Number	Preliminary Round Ranking			Field Number	Preliminary Round Ranking		
07 C	Group	17	4位	01 C	Group	21	5位	10 A	Group	1	4位	11 B	Group	5	5位
	Group	41	5位		Group	45	3位		Group	25	5位		Group	29	3位
Game Number	Group	65	3位	Game Number	Group	69	4位	Game Number	Group	49	3位	Game Number	Group	53	4位
1017	Group	89	4位	1021	Group	93	5位	1025	Group	73	4位	1029	Group	77	5位
Field Number	Preliminary Round Ranking			Field Number	Preliminary Round Ranking			Field Number	Preliminary Round Ranking			Field Number	Preliminary Round Ranking		
08 A	Group	18	5位	09 A	Group	22	3位	10 B	Group	2	5位	11 C	Group	6	3位
	Group	42	3位		Group	46	4位		Group	26	3位		Group	30	4位
Game Number	Group	66	4位	Game Number	Group	70	5位	Game Number	Group	50	4位	Game Number	Group	54	5位
1018	Group	90	5位	1022	Group	94	3位	1026	Group	74	5位	1030	Group	78	3位
Field Number	Preliminary Round Ranking			Field Number	Preliminary Round Ranking			Field Number	Preliminary Round Ranking			Field Number	Preliminary Round Ranking		
08 B	Group	19	3位	09 B	Group	23	4位	10 C	Group	3	3位	12 A	Group	7	4位
	Group	43	4位		Group	47	5位		Group	27	4位		Group	31	5位
Game Number	Group	67	5位	Game Number	Group	71	3位	Game Number	Group	51	5位	Game Number	Group	55	3位
1019	Group	91	3位	1023	Group	95	4位	1027	Group	75	3位	1031	Group	79	4位
Field Number	Preliminary Round Ranking			Field Number	Preliminary Round Ranking			Field Number	Preliminary Round Ranking			Field Number	Preliminary Round Ranking		
08 C	Group	20	4位	09 C	Group	24	5位	11 A	Group	4	4位	12 B	Group	8	5位
	Group	44	5位		Group	48	3位		Group	28	5位		Group	32	3位
Game Number	Group	68	3位	Game Number	Group	72	4位	Game Number	Group	52	3位	Game Number	Group	56	4位
1020	Group	92	4位	1024	Group	96	5位	1028	Group	76	4位	1032	Group	80	5位

IX.Match Table Friendly Tournament Round1



TAIYO GROUP presents Friendly Tournament Round1 N.I.T. Hakodate College

Field Number	Preliminary Round Ranking			Field Number	Preliminary Round Ranking			Field Number	Preliminary Round Ranking			Field Number	Preliminary Round Ranking		
12 C	Group	9	3位	14 A	Group	13	4位	15 B	Group	17	5位	16 C	Group	21	3位
	Group	33	4位		Group	37	5位		Group	41	3位		Group	45	4位
Game Number	Group	57	5位	Game Number	Group	61	3位	Game Number	Group	65	4位	Game Number	Group	69	5位
1033	Group	81	3位	1037	Group	85	4位	1041	Group	89	5位	1045	Group	93	3位
Field Number	Preliminary Round Ranking			Field Number	Preliminary Round Ranking			Field Number	Preliminary Round Ranking			Field Number	Preliminary Round Ranking		
13 A	Group	10	4位	14 B	Group	14	5位	15 C	Group	18	3位	17 A	Group	22	4位
	Group	34	5位		Group	38	3位		Group	42	4位		Group	46	5位
Game Number	Group	58	3位	Game Number	Group	62	4位	Game Number	Group	66	5位	Game Number	Group	70	3位
1034	Group	82	4位	1038	Group	86	5位	1042	Group	90	3位	1046	Group	94	4位
Field Number	Preliminary Round Ranking			Field Number	Preliminary Round Ranking			Field Number	Preliminary Round Ranking			Field Number	Preliminary Round Ranking		
13 B	Group	11	5位	14 C	Group	15	3位	16 A	Group	19	4位	17 B	Group	23	5位
	Group	35	3位		Group	39	4位		Group	43	5位		Group	47	3位
Game Number	Group	59	4位	Game Number	Group	63	5位	Game Number	Group	67	3位	Game Number	Group	71	4位
1035	Group	83	5位	1039	Group	87	3位	1043	Group	91	4位	1047	Group	95	5位
Field Number	Preliminary Round Ranking			Field Number	Preliminary Round Ranking			Field Number	Preliminary Round Ranking			Field Number	Preliminary Round Ranking		
13 C	Group	12	3位	15 A	Group	16	4位	16 B	Group	20	5位	17 C	Group	24	3位
	Group	36	4位		Group	40	5位		Group	44	3位		Group	48	4位
Game Number	Group	60	5位	Game Number	Group	64	3位	Game Number	Group	68	4位	Game Number	Group	72	5位
1036	Group	84	3位	1040	Group	88	4位	1044	Group	92	5位	1048	Group	96	3位

IX.Match Table Friendly Tournament Round1



TAIYO GROUP presents Friendly Tournament Round1 N.I.T. Hakodate College

Field Number	Preliminary Round Ranking			Field Number	Preliminary Round Ranking			Field Number	Preliminary Round Ranking			Field Number	Preliminary Round Ranking		
02 A	Group	1	5位	19 A	Group	5	3位	20 B	Group	9	4位	21 B	Group	13	5位
	Group	25	3位		Group	29	4位		Group	33	5位		Group	37	3位
Game Number	Group	49	4位	Game Number	Group	53	5位	Game Number	Group	57	3位	Game Number	Group	61	4位
1049	Group	73	5位	1053	Group	77	3位	1057	Group	81	4位	1061	Group	85	5位
Field Number	Preliminary Round Ranking			Field Number	Preliminary Round Ranking			Field Number	Preliminary Round Ranking			Field Number	Preliminary Round Ranking		
18 A	Group	2	3位	19 B	Group	6	4位	20 C	Group	10	5位	21 C	Group	14	3位
	Group	26	4位		Group	30	5位		Group	34	3位		Group	38	4位
Game Number	Group	50	5位	Game Number	Group	54	3位	Game Number	Group	58	4位	Game Number	Group	62	5位
1050	Group	74	3位	1054	Group	78	4位	1058	Group	82	5位	1062	Group	86	3位
Field Number	Preliminary Round Ranking			Field Number	Preliminary Round Ranking			Field Number	Preliminary Round Ranking			Field Number	Preliminary Round Ranking		
18 B	Group	3	4位	19 C	Group	7	5位	02 B	Group	11	3位	22 A	Group	15	4位
	Group	27	5位		Group	31	3位		Group	35	4位		Group	39	5位
Game Number	Group	51	3位	Game Number	Group	55	4位	Game Number	Group	59	5位	Game Number	Group	63	3位
1051	Group	75	4位	1055	Group	79	5位	1059	Group	83	3位	1063	Group	87	4位
Field Number	Preliminary Round Ranking			Field Number	Preliminary Round Ranking			Field Number	Preliminary Round Ranking			Field Number	Preliminary Round Ranking		
18 C	Group	4	5位	20 A	Group	8	3位	21 A	Group	12	4位	22 B	Group	16	5位
	Group	28	3位		Group	32	4位		Group	36	5位		Group	40	3位
Game Number	Group	52	4位	Game Number	Group	56	5位	Game Number	Group	60	3位	Game Number	Group	64	4位
1052	Group	76	5位	1056	Group	80	3位	1060	Group	84	4位	1064	Group	88	5位

IX.Match Table Friendly Tournament Round1



TAIYO GROUP presents Friendly Tournament Round1 N.I.T. Hakodate College

Field Number	Preliminary Round Ranking			Field Number	Preliminary Round Ranking		
22 C	Group	17	3位	02 C	Group	21	4位
	Group	41	4位	1	Group	45	5位
Game Number	Group	65	5位	Game Number	Group	69	3位
1065	Group	89	3位	1069	Group	93	4位

Field Number	Preliminary Round Ranking			Field Number	Preliminary Round Ranking		
23 A	Group	18	4位	24 A	Group	22	5位
	Group	42	5位	2	Group	46	3位
Game Number	Group	66	3位	Game Number	Group	70	4位
1066	Group	90	4位	1070	Group	94	5位

Field Number	Preliminary Round Ranking			Field Number	Preliminary Round Ranking		
23 B	Group	19	5位	24 B	Group	23	3位
	Group	43	3位		Group	47	4位
Game Number	Group	67	4位	Game Number	Group	71	5位
1067	Group	91	5位	1071	Group	95	3位

Field Number	Preliminary Round Ranking			Field Number	Preliminary Round Ranking		
23 C	Group	20	3位	24 C	Group	24	4位
	Group	44	4位		Group	48	5位
Game Number	Group	68	5位	Game Number	Group	72	3位
1068	Group	92	3位	1072	Group	96	4位

IX.Match Table Friendly Tournament Round2



TAIYO GROUP presents Friendly Tournament Round2 N.I.T. Hakodate College

Field Number	Round1 Game No.			Field Number	Round1 Game No.			Field Number	Round1 Game No.			Field Number	Round1 Game No.		
01 A	試合No.	1001	1位	05 B	試合No.	1017	1位	07 C	試合No.	1033	1位	10 A	試合No.	1049	1位
	試合No.	1002	1位		試合No.	1018	1位		試合No.	1034	1位		試合No.	1050	1位
Game Number	試合No.	1003	1位	Game Number	試合No.	1019	1位	Game Number	試合No.	1035	1位	Game Number	試合No.	1051	1位
2001	試合No.	1004	1位	2005	試合No.	1020	1位	2009	試合No.	1036	1位	2013	試合No.	1052	1位
Field Number	Round1 Game No.			Field Number	Round1 Game No.			Field Number	Round1 Game No.			Field Number	Round1 Game No.		
03 B	試合No.	1005	1位	01 B	試合No.	1021	1位	08 B	試合No.	1037	1位	10 C	試合No.	1053	1位
	試合No.	1006	1位		試合No.	1022	1位		試合No.	1038	1位		試合No.	1054	1位
Game Number	試合No.	1007	1位	Game Number	試合No.	1023	1位	Game Number	試合No.	1039	1位	Game Number	試合No.	1055	1位
2002	試合No.	1008	1位	2006	試合No.	1024	1位	2010	試合No.	1040	1位	2014	試合No.	1056	1位
Field Number	Round1 Game No.			Field Number	Round1 Game No.			Field Number	Round1 Game No.			Field Number	Round1 Game No.		
04 A	試合No.	1009	1位	06 B	試合No.	1025	1位	01 C	試合No.	1041	1位	11 B	試合No.	1057	1位
	試合No.	1010	1位		試合No.	1026	1位		試合No.	1042	1位		試合No.	1058	1位
Game Number	試合No.	1011	1位	Game Number	試合No.	1027	1位	Game Number	試合No.	1043	1位	Game Number	試合No.	1059	1位
2003	試合No.	1012	1位	2007	試合No.	1028	1位	2011	試合No.	1044	1位	2015	試合No.	1060	1位
Field Number	Round1 Game No.			Field Number	Round1 Game No.			Field Number	Round1 Game No.			Field Number	Round1 Game No.		
04 C	試合No.	1013	1位	07 A	試合No.	1029	1位	09 B	試合No.	1045	1位	12 A	試合No.	1061	1位
	試合No.	1014	1位		試合No.	1030	1位		試合No.	1046	1位		試合No.	1062	1位
Game Number	試合No.	1015	1位	Game Number	試合No.	1031	1位	Game Number	試合No.	1047	1位	Game Number	試合No.	1063	1位
2004	試合No.	1016	1位	2008	試合No.	1032	1位	2012	試合No.	1048	1位	2016	試合No.	1064	1位

IX.Match Table Friendly Tournament Round2

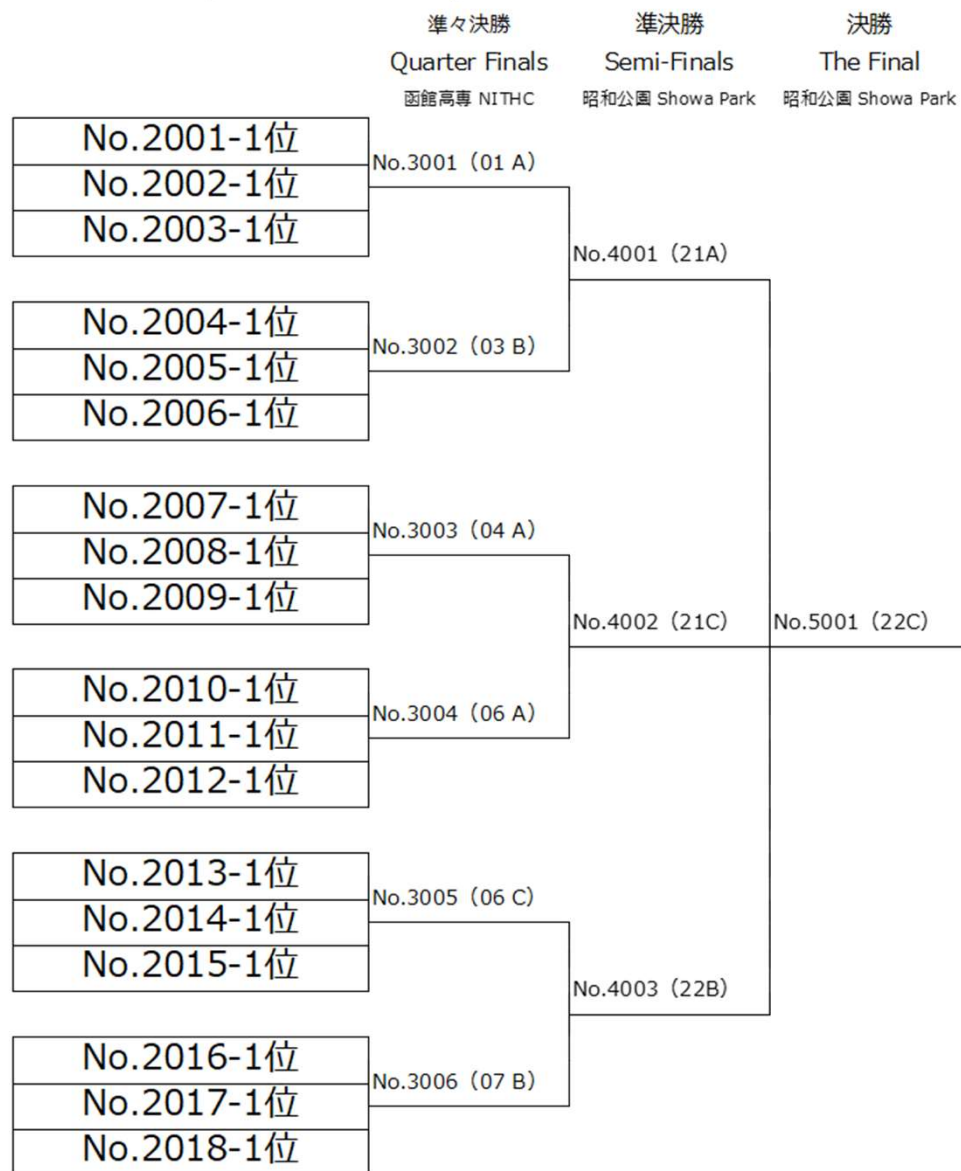


TAIYO GROUP presents Friendly Tournament Round2 N.I.T. Hakodate College

Field Number	Round1 Game No.		
12 C	試合No.	1065	1位
	試合No.	1066	1位
Game Number	試合No.	1067	1位
2017	試合No.	1068	1位

Field Number	Round1 Game No.		
13 B	試合No.	1069	1位
	試合No.	1070	1位
Game Number	試合No.	1071	1位
2018	試合No.	1072	1位

TAIYO GROUP presents Friendly Tournament



試合No.の後の(数字)はコート番号を表す
(当日の状況により変更になることがある)



Court Area

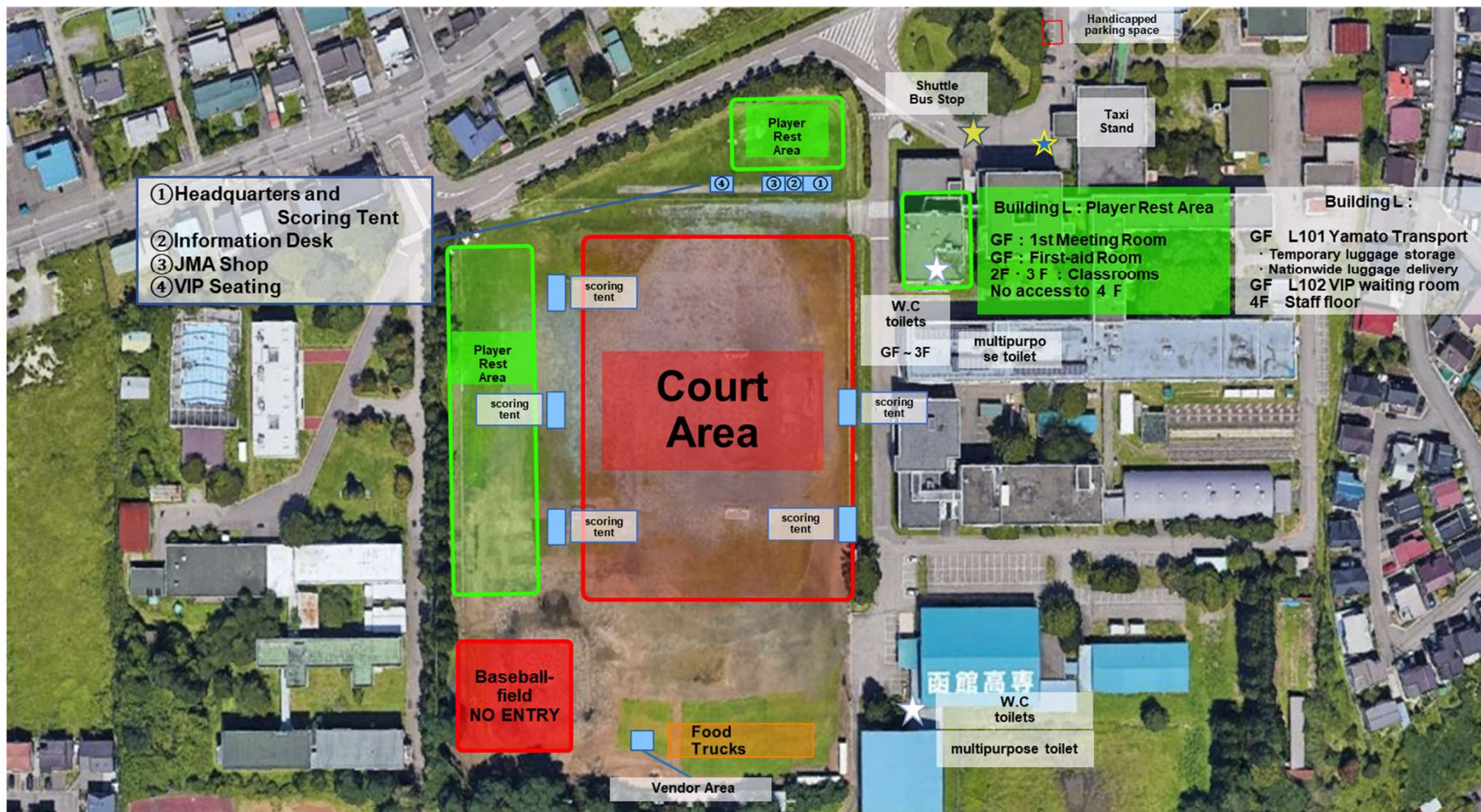
Only participants are allowed to enter the Court Area.
Hydration is permitted within the Court Area, but eating, drinking alcohol, and smoking are prohibited.
Please use the Player Rest Area or available spaces around the venue for meals.

Player Rest Area

You are welcome to create shade in ways that do not inconvenience others, but pegging tents is prohibited.
The Player Rest Area has many shaded spots.
You may bring chairs and leisure mats, but please ensure they do not inconvenience others.

Additional Information:

There are cloakrooms for storing luggage and places where you can send your luggage nationwide (for a fee).
At Showa Park, please smoke in designated areas.
Please manage your belongings, including valuables, at your own risk.
The tournament organizers are not responsible for any lost or stolen items.



Court Area

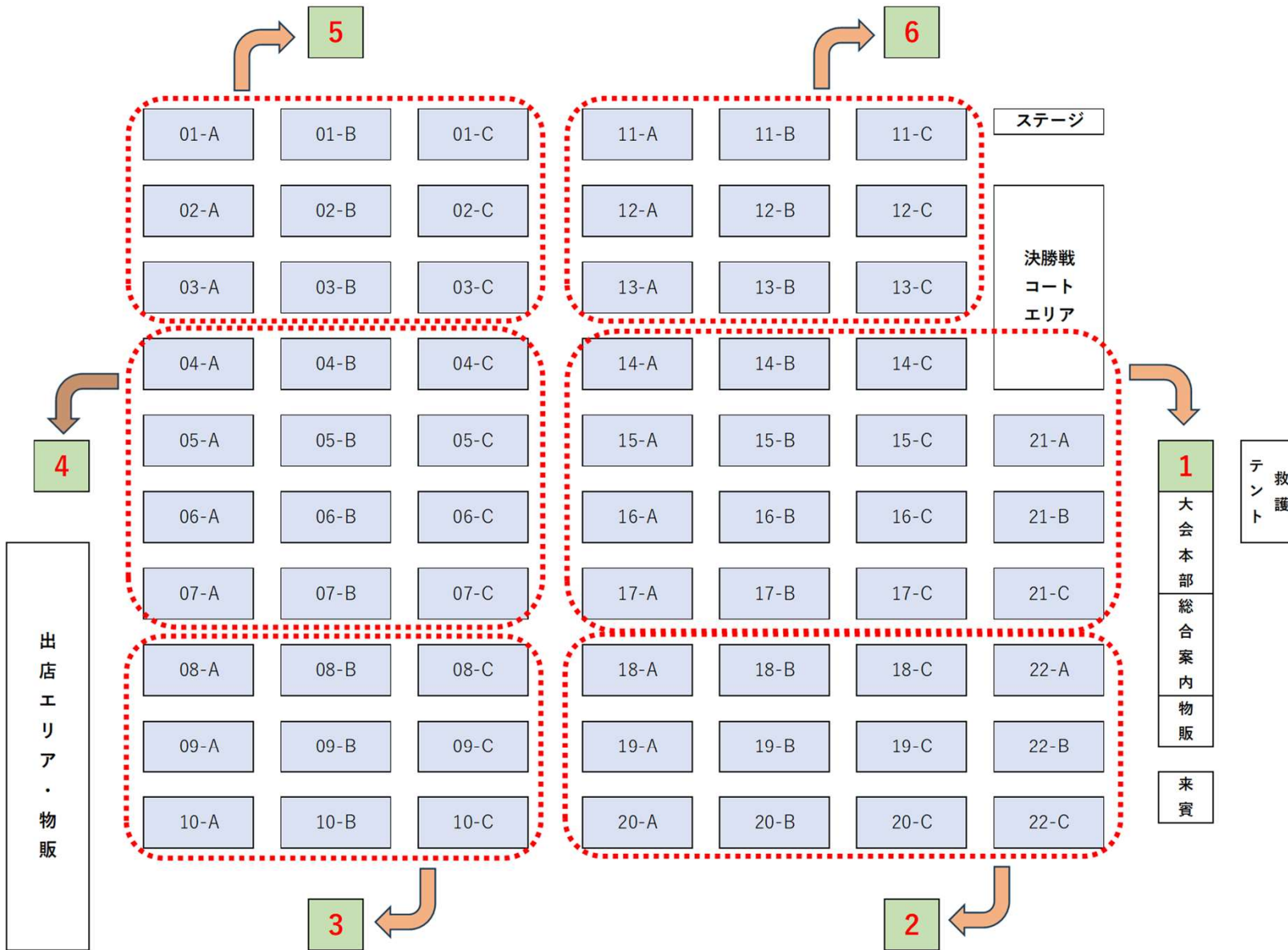
Only participants are allowed to enter the Court Area.
Hydration is permitted within the Court Area, but eating, drinking alcohol, and smoking are prohibited.
Please use the Player Rest Area or available spaces around the venue for meals.

Player Rest Area

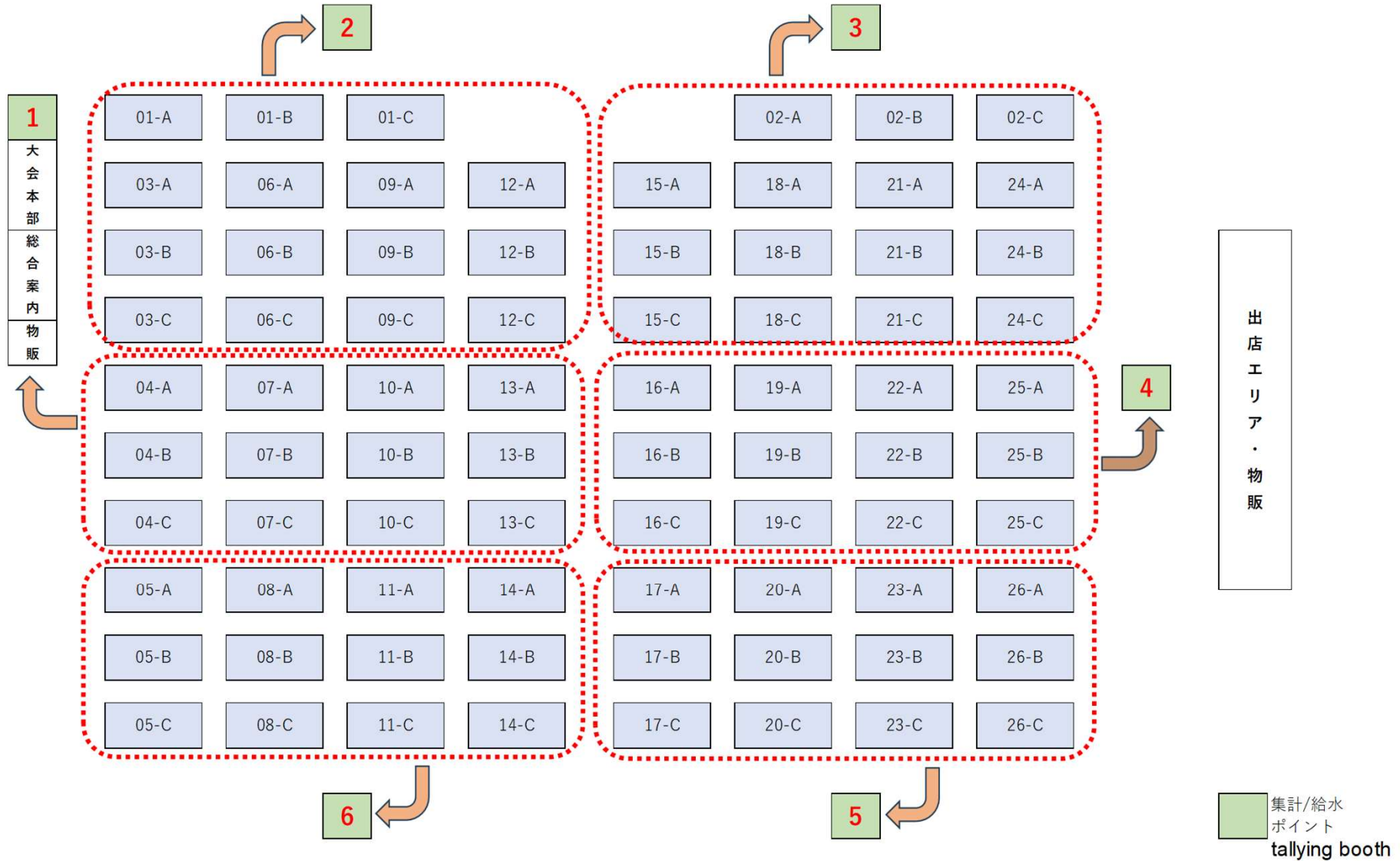
You are welcome to create shade in ways that do not inconvenience others, but pegging tents is prohibited.
The Player Rest Area has many shaded spots.
You may bring chairs and leisure mats, but please ensure they do not inconvenience others.

Additional Information:

There are cloakrooms for storing luggage and places where you can send your luggage nationwide (for a fee).
Smoking is completely prohibited on the premises of N.I.T. Hakodate College.
There are no smoking areas on the premises, and drinking alcohol is also prohibited. No alcoholic beverages will be sold.
Please manage your belongings, including valuables, at your own risk.
The tournament organizers are not responsible for any lost or stolen items.



集計/給水
ポイント
tallying booth



■Practice Venues for Players

We are pleased to announce the opening of practice venues for players. Please take note of the following details and guidelines:

8/22 (Thursday): N.I.T. Hakodate College, 12:00 PM - 6:00 PM

- Parking within Hakodate College and the temporary parking lot is not available. Please use public transportation.
- No Molkky sets will be provided.
- Drinking alcohol and smoking are **STRICTLY PROHIBITED** within Hakodate College premises.

■Practice Venues for Players

8/23 (Friday): Showa Park, 11:00 AM - 5:00 PM

- Parking within Showa Park is not allowed. Only the temporary parking lot can be used without a reservation (limited spaces available). [Location here](#).
- No Molkky sets will be provided.
- Smoking is allowed only in designated areas.

Championship Days (8/24 and 25):

- Practice will be possible from 7:30 AM in available spaces at each venue.
- Space is limited, so please share and be mindful of others.
- Areas under setup have priority for installation.

***Do not use the provided Molkky sets for practice purposes.**

Stay considerate and enjoy your practice!

■Event Continuation, Cancellation, and Delays

The tournament will proceed in the rain unless there are dangerous conditions like lightning. Please bring rain gear as necessary.

In case of cancellation, notifications will be posted on the official website and sent via email by the day before the event.

Cancellation criteria include:

- Government or local authority advisories or requests for event cancellation.
- Weather warnings (heavy rain, strong wind, floods, heavy snow) or disaster impacts in the event area.
- Disruption of transportation making it difficult for participants to attend, or the potential for secondary disasters.
- Inability to secure key personnel for event operation.

Schedule changes may occur due to weather or other unforeseen circumstances.

■Transportation (Temporary Parking, Shuttle Buses, and Other Means)

Temporary Parking: Pre-reservation required for one vehicle per team at each venue. If using temporary parking, please print and bring your parking pass in advance. Spectators may use available spaces from 10:00 AM on the 25th.

Spectators are encouraged to use public transportation.

Shuttle buses are primarily for players, but spectators may ride if seats are available.

Please carpool if possible to reduce the number of vehicles.

*It takes about 10 minutes to walk from the temporary parking to the venue, so please allow sufficient time.

Shuttle Buses: Direct shuttle buses will run from Hakodate Station to each venue. Pre-reservation is required for players, but spectators may ride if seats are available.

Other Transportation: Bicycle and motorcycle parking is available, but space is limited.

Parking Rules: Illegal parking, unauthorized parking at nearby facilities, and causing inconvenience to the neighborhood are prohibited.

■Outfit and Health Management

Footwear: No entry with spikes, leather shoes, or heels. Please wear sneakers or athletic shoes.

Weather Preparation: Dress appropriately for sudden temperature changes. Bring rain gear if needed.

Heatstroke Prevention: Manage your health by taking breaks and staying hydrated. Free water dispensers will be available at multiple locations within the court area. Bring your own bottles as paper cups will not be provided.

Shaded grassy areas are available in Showa Park,
and indoor classrooms are available at N.I.T. Hakodate College for rest.

A first-aid room with medical staff will also be available.

■Venue Usage Guidelines

Venue Areas: The venue is divided into the Court Area and the Player Rest Area.

Please use the Player Rest Area for your breaks.

We kindly ask you to share the limited space available in the venue with consideration for others.

Court Area: Only participants are allowed to enter the Court Area.

Hydration is permitted within the Court Area, but eating, drinking alcohol, and smoking are prohibited.

Please use the Player Rest Area or available spaces around the venue for meals.

Player Rest Area: You are welcome to create shade in ways that do not inconvenience others, but pegging tents is prohibited.

The Player Rest Area has many shaded spots (N.I.T Hakodate College will open some classrooms for resting).

You may bring chairs and leisure sheets, but please ensure they do not inconvenience others.

Additional Information: There are cloakrooms for storing luggage and places where you can send your luggage nationwide (for a fee).

At Showa Park, please smoke in designated areas.

Smoking is completely prohibited on the premises of N.I.T. Hakodate College. There are no smoking areas on the premises, and drinking alcohol is also prohibited. No alcoholic beverages will be sold.

Please manage your belongings, including valuables, at your own risk.

The tournament organizers are not responsible for any lost or stolen items.

■Prohibited Activities

Prohibited Items: The use of open flames or dangerous items prohibited by law is not allowed, except in food trucks.

Prohibited Actions: Unauthorized drone or RC plane flights, flyer distribution, demonstrations, rallies, speeches, unauthorized sales, unauthorized filming, and damage or defacement of facilities are prohibited.

Parking Violations: Avoid illegal parking and actions that inconvenience the neighborhood.

■Waste Management

Waste Disposal: Take your trash home or use designated bins (burnable, non-burnable, PET bottles).

Vendor Waste: Vendors are responsible for collecting waste from their sales.

Littering: Please dispose of any litter you see. Your cooperation is appreciated.

■Viewing and Filming Etiquette

Viewing: Watch matches from outside the court area without disturbing the players. Entry to the court area is restricted to participants only.

Filming: Obtain permission from those around you before filming. Do not obstruct matches. If necessary, staff may ask you to move or stop filming. Get consent from the opposing team before posting on social media.

Unauthorized filming, recording, or streaming of celebrities is prohibited.

■Additional Information

Photos and Videos: Be aware that photos and videos taken at the event may be used by JMA or participants and published on the internet.

Compliance: Follow staff instructions. Disruptive behavior or actions that inconvenience others may result in disqualification from the event.

World Molkky Recreation

We are excited to host a recreational event for tournament participants. The event features "Time Attack 50," where teams aim to score exactly 50 points, with rankings determined by the time taken to achieve this. Teams handle the throwing, scorekeeping, and skittle resetting by themselves. Additionally, we have "TOBA-CON," a competition to see how far a skittle can fly after being hit with a Molkky stick. There will also be various inter-team exchange matches. We look forward to welcoming you to a fun-filled event with plenty of exciting activities!

Activities

- Time Attack 50
- Skittles Skipping Contest(TOBA-CON)
- Interleague Match

Date and Venue

August 23rd (Friday) 10:00 - 12:00 at Showa Park

August 25th (Sunday) 13:00 - 15:00 at N.I.T. Hakodate College

”Finland Weekend” in Hakodate

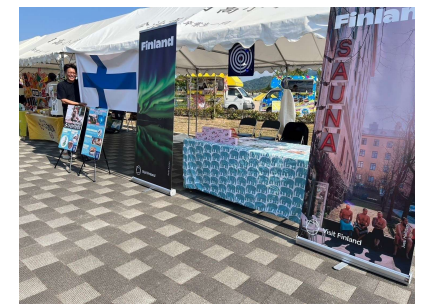
Join us for the special event "Finland Weekend," where you can enjoy Finnish food, explore Finnish culture, and experience the traditions of Finland, the birthplace of Molkky. Don't miss this unique opportunity!

Activities

- Traditional reindeer accessory workshop using Finnish materials
- Introduction to a project offering an authentic Finnish sauna experience in Hokkaido
- Sales of Finnish goods and foods

Venue

Showa Park



Japan Molkky Association (JMA): original merchandise information

To commemorate the 2024 Molkky World Championships to be held in Hakodate, original merchandise will be available at the tournament venue. (Prices including consumption tax)

- 1.Throwing skittle engraved “World Championship Hakodate 2024” : ￥2,000
- 2.Original bottle with MM2024 Logo (HYDRATION 16oz: 4 colours) : ￥4,500
- 3.Original T-shirt printed “World Molkky Championship 2024 in Hakodate” : ￥3,000
- 4.「Dr. Molkky」written by Shuichi Yatsuga, Representative Director of JMA: ￥1,760
- 5.Other original merchandise (TBD)
- 6.The collaboration merchandise for the “2024 Molkky World Championships in Hakodate” and the popular anime series “Girls und Panzer das Finale.” will also be available at the tournament venue.



Opening hours are as follows.

2024/8/23(Fri.) (Showa Park only) 10:00～

2024/8/24(Sat.) (Showa Park・N.I.T Hakodate College) 10:00～

2024/8/25(Sun.) (Showa Park・N.I.T Hakodate College) 10:00～



Temporary Shuttle Bus

The temporary shuttle bus connecting Hakodate Station, Showa Park, and N.I.T Hakodate College during the event. The service schedule and routes are as follows:

Route: Hakodate Station - Showa Park (Approximate travel time: 25 minutes)

Dates: 23rd (Fri), 24th (Sat), and 25th (Sun)

Route: Hakodate Station - N.I.T Hakodate College (25 minutes)

Dates: 24th (Sat) and 25th (Sun)

Route: Showa Park - N.I.T Hakodate College (20 minutes)

Date: 25th (Sun) only

Important Notes:

- The bus pick-up and drop-off location at Hakodate Station is the bus stop #8 and #9 of the bus terminal.
- Some bus services require prior reservation, while others do not.
- Priority is given to players. Friends, family members, and spectators may use the service if seats are available.
- Travel times may be longer due to road conditions, so we recommend allowing extra time for your journey.

Prior Reservation Required: Morning Services on 24th (Sat)

Due to the tournament schedule, both morning buses on 24th (6:30AM–8:30AM) to Showa Park and N.I.T.Hakodate College will prioritise players for teams participating in Block A and Block C, and require prior reservation.

Please note: Prior reservations were closed on 10th August.

Route: Hakodate Station → Showa Park

24th (Sat): Buses departing between 6:30 AM and 8:30 AM will require prior reservation

Route: Hakodate Station → N.I.T Hakodate College

24th (Sat): Buses departing between 6:30 AM and 8:30 AM will require prior reservation

25th (Sun) morning Shuttle Bus(Priority for Players):

The following buses will prioritise players. Please be sure to wear your wristband.

Route: Hakodate Station → Showa Park

25th (Sun): Buses departing between 6:30 AM and 8:30 AM will prioritise players

Route: Hakodate Station → N.I.T Hakodate College

25th (Sun): Buses departing between 6:30 AM and 8:30 AM will prioritise players

シャトルバス Shuttle bus timetable

(行き) 函館駅→昭和公園

Hakodate Sta. - Showa Park

時	8/23	8/24	8/25
hrs	分	分	分
mins	mins	mins	mins
6		30	30
		50	45
		10	00
7		30	15
		50	30
		10	00
8		30	15
		30	30
9	05		
	35		
		50	50
10	15		
	45	55	
11	25	00	10
	55		20
12		05	30
		10	35
13		15	
		20	
14	50	35	55
15	10		
	55	50	
16	15		05
17	05	10	15
	25	30	
		45	
18	15	20	20
	35	40	
		55	55
19			15
20			00
			15

函館駅 (⑧番のりば)
Hakodate Sta. bus stop #8
↓
(所要 25分) pproximate travel time: 25 minutes
↓
昭和公園
Showa Park

(帰り) 昭和公園→函館駅

Showa Park - Hakodate Sta.

時	8/23	8/24	8/25
hrs	分	分	分
mins	mins	mins	mins
6			
7		00	15
		20	30
		40	45
8		00	00
		10	10
9	40		
10	10	30	30
	50		45
11	20	30	
		35	55
12		40	00
		45	
13			05
			10
14	10	00	20
	40		
15	20	10	30
	40		
16	30	30	40
	50	55	
17	40	10	
	00	45	50
	00	05	25
18	20	20	45
	50		55
19	10	00	
		15	30
		30	45
20			30
			45

昭和公園 (⑧番のりば)
Showa Park bus stop #8
↓
(所要 25分) pproximate travel time: 25 minutes
↓
函館駅 (⑧番のりば)
Hakodate Sta. bus stop #8

(行き) 函館駅→函館高専

Hakodate Sta. - N. I. T Hakodate College

時	8/23	8/24	8/25
hrs	分	分	分
mins	mins	mins	mins
6		30	30
		00	50
		00	10
7		20	20
		30	30
		00	50
8		20	10
		30	20
		45	25
9		35	45
		50	50
10		45	35
11		05	05
		35	
12		15	15
		20	
13		25	25
		30	
14		40	
15		50	
16			
17		10	
		30	
		45	
18		20	
		40	
		55	
19			

函館駅 (⑨番のりば)
Hakodate Sta. bus stop #9
↓
(所要 25分) pproximate travel time: 25 minutes
↓
函館高専
N. I. T Hakodate College

(帰り) 函館高専→函館駅

N. I. T Hakodate College - Hakodate Sta.

時	8/23	8/24	8/25
hrs	分	分	分
mins	mins	mins	mins
6			
7		00	20
		30	40
		50	50
8		00	00
		10	20
9		00	00
		10	10
10		10	00
		30	30
11		20	40
		40	40
12		10	
		50	50
13			
14		00	00
		05	
15		15	
16		30	
		55	
17		10	
		45	
18		05	
		20	
19		00	
		15	
		30	

函館高専 (⑨番のりば)
N. I. T Hakodate College bus stop #9
↓
(所要 25分) pproximate travel time: 25 minutes
↓
函館駅 (⑨番のりば)
Hakodate Sta. bus stop #9

(移動) 函館高専→昭和公園

N. I. T Hakodate College - Showa Park

時	8/23	8/24	8/25
hrs	分	分	分
mins	mins	mins	mins
6			
7			
8			
9			
10			30
11			20
12			10
13			00
			50
14			40
15			
16			
17			
18			
19			

函館高専 (⑨番のりば)
N. I. T Hakodate College bus stop #9
↓
(所要 20分) pproximate travel time: 20 minutes
↓
昭和公園
Showa Park

※赤枠の時間帯について

8/24は事前予約済の選手優先です (それ以外の方は乗車できません)。
8/25は各会場の出場選手優先です (リストバンドを必ず着用してください)。

*For the buses in the red box

For 24th morning, priority is given to players who have made reservations in advance. Other players will not be allowed to board.
For 25th morning, priority will be given to players for each venue. Please be sure to wear your wristband.

Temporary parking space

Temporary parking lots will be set up around Showa Park and N.I.T Hakodate College. These are located about a 10 to 15-minute walk from each venue.

Please note that the gate of parking lot③(sewage treatment centre) at Showa Park closes at 8 p.m sharp. You MUST leave the parking lot by 8.p.m.

The exact locations will be disclosed only to those who make a reservation.

Please note: Parking usage is, in principle, by prior reservation only.
Prior reservations closed on 6th August.

Additionally, reservations for only the 25th of August are not available.

The existing parking facilities at each venue are reserved for event staff and are not available for participants/players.

Additional Parking Availability

If there are unused parking spaces, they will be opened for use without prior reservation at the following times:

Saturday, 24th August, from 14:00 / Sunday, 25th August, from 10:00

Showa Park Temporary Parking Lot



Showa Park ([GoogleMAP LINK](#))

Temporary Parking Lot [1]
(Approximately 16-minute walk to the venue)
Nishikikyo #1 Green Area
([GoogleMAP LINK](#))

Temporary Parking Lot [2]
(Approximately 16-minute walk to the venue)
**Hokkaido Coca-Cola Bottling Co.,
Hakodate Parking Lot**
([GoogleMAP LINK](#))

Temporary Parking Lot [3]
(Approximately 12-minute walk to the venue)
Sewage Treatment Centre, Showa-cho
([GoogleMAP LINK](#))

*Only for Tournament Players (Vistors not allowed)

No Parking
Restricted to Event Staff
Only (No Player Parking)

No Parking

N.I.T Hakodate College Temporary Parking Lot



N.I.T Hakodate College

([GoogleMAP LINK](#))

Temporary Parking Lot [1]

(Approximately 1-minute walk to the venue)

N.I.T Hakodate College Parking Lot

([GoogleMAP LINK](#))

Temporary Parking Lot [2]

(Approximately 10-minute walk to the venue)

Parking Lot across the road of Hakodate University

([GoogleMAP LINK](#))

Prohibition of Commercial Sales Activities

Due to legal and venue regulations, all forms of commercial sales activities are strictly prohibited for both participants and attendees.

If such activities are discovered within the tournament venue, you may be asked to leave immediately.

We kindly ask for your cooperation to ensure a better tournament experience for everyone.



日本モルック協会
Japan Molkky Association

Smile with You

誰もが笑顔になれる。それがモルックです。

